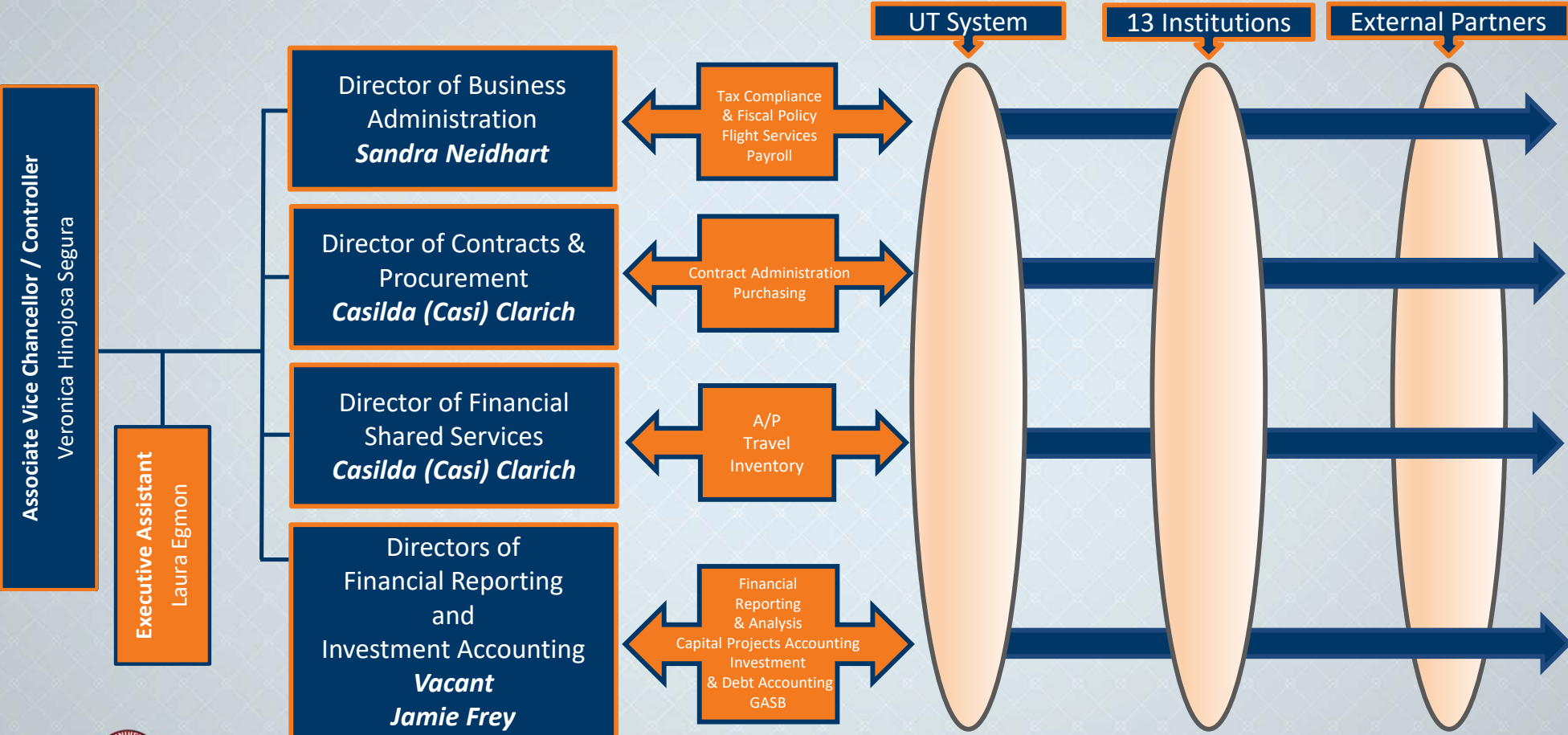


Center of Excellence (CoE) Org Structure



All Units

Associate Vice Chancellor / Controller
Veronica Hinojosa Segura

Executive Assistant
Laura Egmon

Director of Business Administration
Sandra Neidhart

Tax Compliance & Fiscal Policy
Darren Bell

Financial Information Services
Myrna Guevara-Contreras; Jon Mosel;
Catalina Padilla

Travel Services & Aircraft Operations
Amy Mitchell;
Dave Crosby; Jeff Perkins

Payroll Services
Tina Peterson; Roxanna Van de Graaf

Director of Contracts & Procurement
Casilda (Casi) Clarich

Contracts & Procurement
Susanna Olivarez
Vanessa Aguilar; Erica Haynes; Ben
Kalenak; Taylor Naiser

Director of Financial Reporting
Vacant

Financial Reporting & Analysis
Crystal Saenz
Vacant

Capital Projects Accounting
Andrea Castro
Paula Castanon; Kim Garrett; Irene
Pickney

Director of Financial Shared Services
Casilda (Casi) Clarich

Assistant Director
Neal Wise

Accounts Payable / Travel
Stan Babbitt; Cindy Dominey;
Jace Franklin

Inventory / Records Retention
Jennifer Hosey; Matthew Swift

Director of Investment Accounting
Jamie Frey

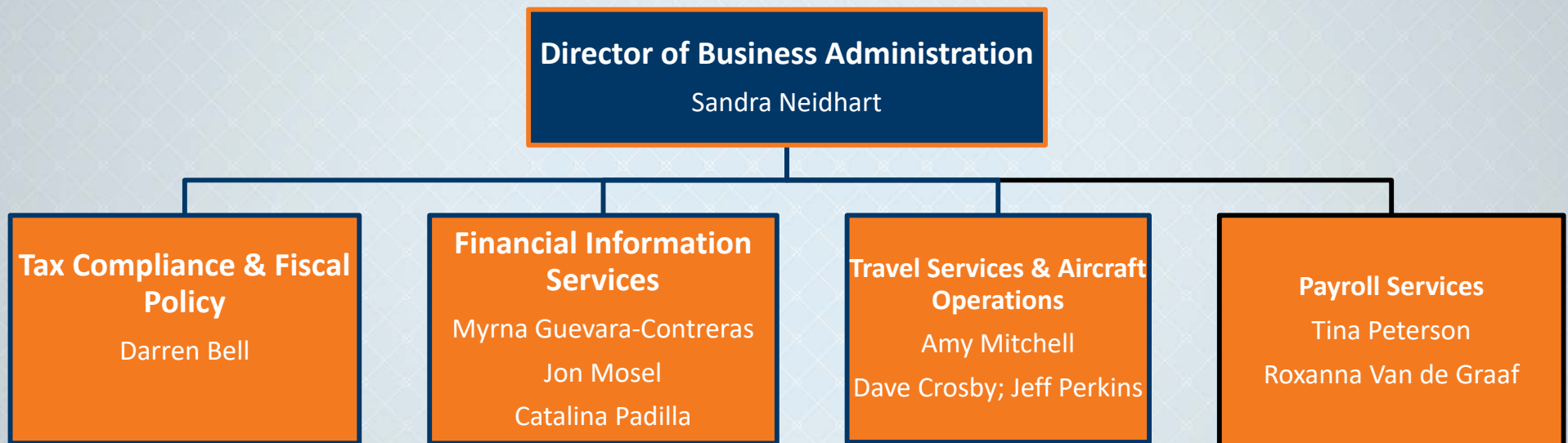
Investment & Debt Accounting
Deloris White
Cecylia Bradford; Mark Foley; Patrick
Lowary

GASB / Financial Reporting
Marili Cavazos; Elva Padilla

**Centers of
Excellence (COE)**



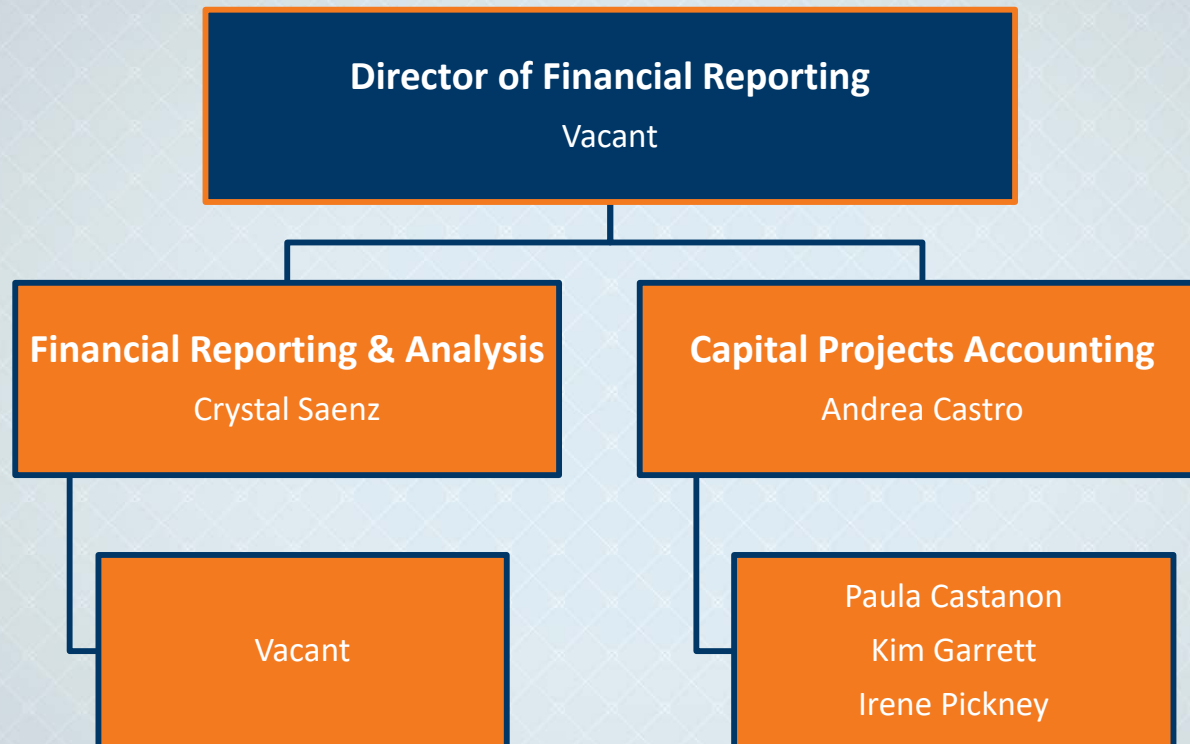
Business Administration



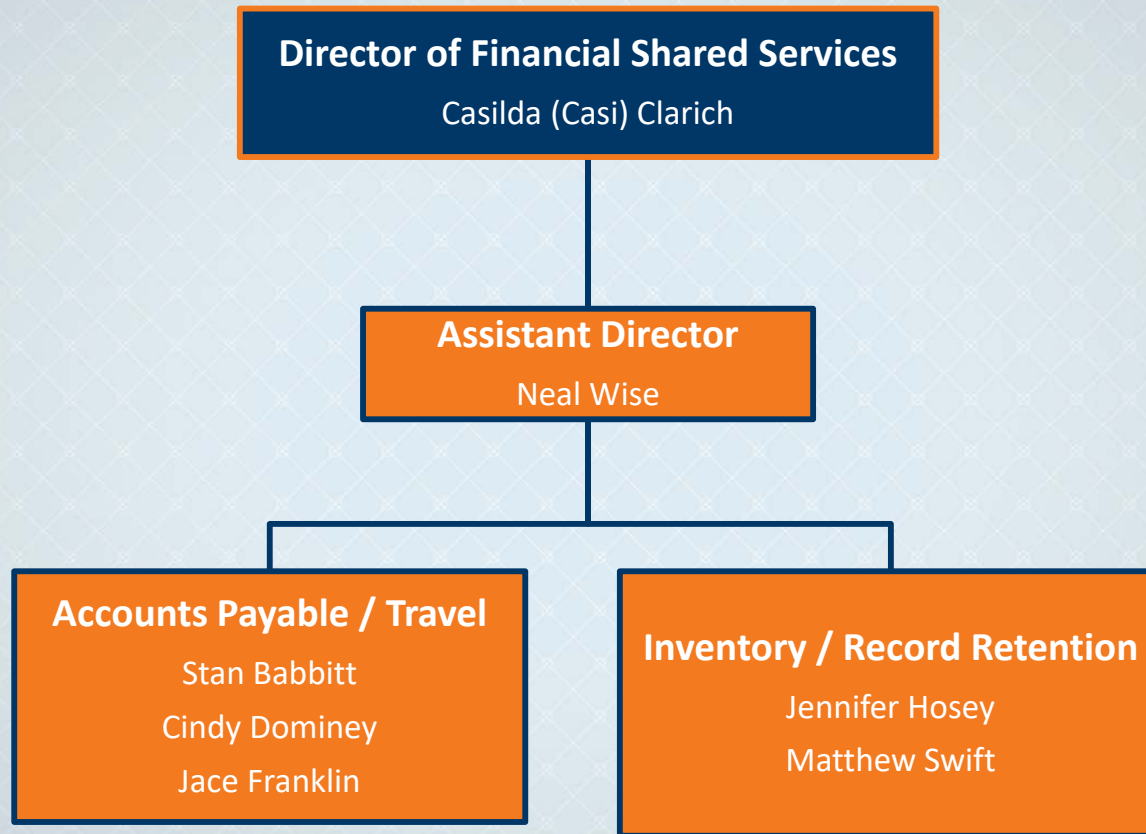
Contracts & Procurement



Financial Reporting



Financial Shared Services



Investment Accounting

