

---

---

**LEGISLATIVE APPROPRIATIONS REQUEST  
FISCAL YEARS 2026 AND 2027**



Submitted to the Office of the Governor, Budget and Policy Division,  
and the Legislative Budget Board

**THE UNIVERSITY OF TEXAS RIO GRANDE VALLEY  
SCHOOL OF MEDICINE**

**August 2024**

---

---



## Table of Contents

	<b>Page</b>
<b>Administrator's Statement</b> .....	1
<b>Organizational Chart</b> .....	12
<b>Budget Overview - Biennial Amounts</b> .....	14
<b>Summary of Request</b>	
2.A Summary of Base Request by Strategy.....	15
2.B Summary of Base Request by Method of Finance.....	19
2.C Summary of Base Request by Object of Expense.....	24
2.D Summary of Base Request Objective Outcomes.....	25
2.E Summary of Exceptional Items Request.....	26
2.F Summary of Total Requests by Strategy.....	27
2.G Summary of Total Request Objective Outcomes.....	30
<b>3.A Strategy Request</b>	
Medical Education.....	32
Podiatric Education.....	35
Graduate Medical Education.....	37
Staff Group Insurance Premiums.....	39
Texas Public Education Grants.....	41
Research Enhancement.....	43
E&G Space Support.....	45
Capital Construction Assistance Projects Revenue Bonds.....	47
School of Medicine.....	49
Cervical Dysplasia and Cancer Immunology Center.....	52
School of Podiatric Medicine.....	54
Exceptional Item Request.....	57
Tobacco Earnings from the Permanent Health Fund for Higher Ed. No. 810.....	59
<b>Strategy Request Summary Totals</b> .....	61
<b>3.B Rider Revisions and Additions Request</b> .....	62
<b>Exceptional Items</b>	
<b>4.A Request Schedule</b>	
Limb Preservation Program.....	63
Cancer Immunology Center.....	65
Limb Preservation Center.....	67

## Table of Contents

(Continued)

### 4.B Strategy Allocation

Limb Preservation Program.....	69
Cancer Immunology Center.....	70
Limb Preservation Center.....	71

### 4.C Strategy Request

Capital Construction Assistance Projects Revenue Bonds.....	72
Cervical Dysplasia and Cancer Immunology Center.....	73
Exceptional Item.....	74

### Supporting Schedule

6.H Estimated Total of All Funds Outside the General Appropriations Act Bill Pattern.....	75
8 Summary of Requests for Facilities-Related Projects.....	76

### Higher Education Supporting Schedules

Schedule 1A: Other Educational and General Income .....	77
Schedule 2: Selected Educational, General and Other Funds .....	80
Schedule 3B: Staff Group Insurance Data Elements .....	82
Schedule 4: Calculation of OASI .....	85
Schedule 5: Calculation of Retirement Proportionality and ORP Differential.....	86
Schedule 7: Personnel.....	87
Schedule 8A: Capital Construction Assistance Projects Revenue Bonds.....	88
<b>Schedule 9: Non-Formula Support Information</b>	
Cervical Dysplasia and Cancer Immunology Center.....	89
Limb Preservation Program.....	92
School of Medicine .....	95
School of Podiatric Medicine.....	99

## Schedules Not Included

<b>Agency Code:</b> 748	<b>Agency Name:</b> University of Texas Rio Grande Valley School of Medicine	<b>Prepared By:</b> Michael Mueller	<b>Date:</b> August 2024	<b>Request Level:</b> Baseline
<p><b>For the schedules identified below, the U. T. Rio Grande Valley either has no information to report or the schedule is not applicable. Accordingly, these schedules have been excluded from the U. T. Rio Grande Valley Legislative Appropriations Request for the 2026-27 biennium.</b></p>				
<b>Number</b>	<b>Name</b>			
3.C	Rider Appropriations and Unexpended Balances Request			
6.A	Historically Underutilized Business (Reported with agency 746)			
6.B	Current Biennium One-time Expenditure Schedule			
6.F	Advisory Committee Supporting Schedule			
6.J	Summary of Behavioral Health Funding			
6.K	Budgetary Impacts Related to Recently Enacted State Legislation Schedule			
6.L	Document Production Standards			
1B	Health-Related Institutions Patient Income			
6	Constitutional Capital Funding			
8.B	Capital Construction Assistance Projects Revenue Bond Issuance History			
8.C	Capital Construction Assistance Projects Revenue Bond Proposed Request by Project			



**Administrator's Statement**

8/14/2024 5:12:44PM

89th Regular Session, Agency Submission, Version 1  
Automated Budget and Evaluation System of Texas (ABEST)

---

**748 The University of Texas Rio Grande Valley School of Medicine**

---

THE UNIVERSITY OF TEXAS RIO GRANDE VALLEY SCHOOLS OF MEDICINE AND PODIATRIC MEDICINE  
ADMINISTRATOR'S STATEMENT

The University of Texas Rio Grande Valley School of Medicine (UTRGV SOM or UT HEALTH RGV) and the School of Podiatric Medicine (SOPM) submit the following Legislative Appropriations Request (LAR) for fiscal years 2026 and 2027 to the Office of the Governor and to the Legislative Budget Board.

**BACKGROUND AND OVERVIEW**

The University of Texas Rio Grande Valley School of Medicine (SOM) is the realization of the decades-long effort of community leaders and other supporters to establish a medical school in the Rio Grande Valley (RGV) to provide health care to a region that historically has been burdened by health disparities and is medically underserved. In fact, all RGV counties are designated “medically underserved areas”, and all the counties are both Mental Health and Primary Care Health Professional Shortage Area (HPSA), (except for Hidalgo County that is only a Mental Health HPSA). In 2013, the Texas Legislature unanimously passed legislation to create the SOM as part of the newly created university. The SOM welcomed its first class in 2016 and since then has graduated five classes of talented physicians. While the SOM is still very young, it has already had a dramatic impact on increasing access to primary and specialty care in the RGV. The school continues to grow its outpatient clinical footprint across the Valley and is working on major initiatives for providing quality cancer care as well as advanced treatment for neurological and neuropsychiatric disorders. The SOM is also conducting important research in diabetes, Alzheimer’s, addiction disorders and various cancers as part of an ambitious plan to build a robust clinical trials program to translate research into tomorrow’s cures.

**TRANSFORMING HEALTH OF THE RIO GRANDE VALLEY**

The vision of the UTRGV School of Medicine is to transform the health of the RGV and beyond by providing advanced academic medicine through five mission pillars: innovative education, life-changing research and discoveries, high quality patient-centered care, serving the community, and sustainability and a culture of entrepreneurship. This transformation begins with training talented students with a passion for serving the community. Since the enrollment of the first class in 2016, 238 medical students have graduated, of which 100% matched to excellent residency programs in 2024 both here in the Valley and elsewhere in some of the best training programs across Texas and the nation. The SOM recently enrolled its 9th class of 55 students for a total enrollment of 220 medical students across all four classes.

UTRGV’s SOM remains committed to recruiting students from the RGV for careers in medicine. Forty-six percent of current students come from the Rio Grande Valley or completed their undergraduate degrees at UTRGV. To help increase the pipeline of students from the area, UTRGV established the Vaqueros MD as an early assurance program. Vaqueros MD selects a limited number of high-achieving South Texas students who begin their undergraduate career at UTRGV and receive conditional acceptance to the SOM upon graduation. UTRGV is also leveraging its new Luminary Scholars program as well as the Joint Admission Medical Program (JAMP) to attract talented high school and college students from South Texas by covering tuition, fees, and other costs for students in the SOM. Scholarships supported by philanthropy lower the cost of medical school for our students, but UTRGV also makes it affordable to obtain a medical education by keeping in-state tuition and fees among the lowest in the state and country. Currently, UTRGV has the lowest in-state tuition in Texas. Luminary Scholars can enter any field of study, and of the 24 students in the inaugural cohort, 8 have indicated they will attend medical school. To assure talent stays in the RGV, Luminary Scholars must pledge that they will remain and work in the RGV for at least the same number of years they were supported beyond their bachelor’s degree. The initial funding for this program came from a private gift of \$40 million.

**748 The University of Texas Rio Grande Valley School of Medicine**

---

**GRADUATE MEDICAL EDUCATION**

As part of UTRGV SOM's commitment to growing the number of primary care physicians and specialists in the RGV and Texas, the number of Graduate Medical Education programs has expanded to 9 residency and fellowship programs with additional slots being added in surgery, cardiology, endocrinology, nephrology, emergency medicine and orthopedics. The SOM has 136 residents and fellows training in the RGV during the 2024-2025 academic year, and recently started the first-ever residency program in Brownsville as part of the school's ongoing efforts to increase the number of first-year positions to meet the State's goal of 1.1:1 ratio for GME first-year slots to new medical graduates. These residency programs and fellowships operate in partnership with local hospitals throughout the RGV. Approximately 56% of the 408 residents and fellows that have completed training since 2016 are staying in Texas to practice, teach or conduct research. Of the total staying in Texas, 59% are staying in the RGV. UTRGV SOM anticipates reaching 280 GME slots before 2030.

**PATIENT CARE**

UTRGV's SOM and SOPM deliver high-quality care in the RGV through the practice plan, UT Health RGV. The purpose of the practice plan is to support the education, research and patient care missions of the school. More than 60 board certified primary and specialty care physicians are now delivering patient-centered care throughout 25 UT Health RGV operated sites across 100 miles within the RGV; podiatrists are providing care in 2 of those clinics. UTRGV SOM also operates three clinical sites in rural areas of Hidalgo, Cameron, and Starr Counties, through the Area Health Education Clinics (AHECs) federal grant program. Podiatrists are also located within the AHECs. Additionally, with the assistance of foundation funding, UTRGV SOM operates a mobile clinical unit, the Unimóvil, to provide basic care in colonias, rural communities lacking basic infrastructure and services, across the RGV. Over the last 12 months through June 2024, UT Health RGV providers had completed 131,732 patient encounters across patient care sites in the RGV. UT Health RGV added cutting-edge services for the treatment of neurological and neuropsychiatric disorders as part of its Institute of Neuroscience (ION) and, in 2025, UT Health RGV will open a new Cancer and Surgery Center with oncology consulting services provided by The University of Texas MD Anderson Cancer Center. The center, which is expected to be completed Spring, 2025, is part of the Phase 1 development of UTRGV's new McAllen Academic Medical campus designed to benefit students, researchers, and patients of the Rio Grande Valley and Texas.

**RESEARCH**

A top priority of the UTRGV SOM is to expand the research enterprise in diseases of importance to the RGV. To this end, the school has recruited expert MD and PhD scientists who are leading research in the region on diabetes, cancer immunology, and neuroscience.

One of the SOM's first recruits was a team of diabetes and genetics scientists as part of the South Texas Diabetes & Obesity Institute (STDOI). The STDOI was established to be a focus for world class biomedical research programs with diverse research efforts in the areas of diabetes, obesity, heart disease, ocular health, psychiatric disease, osteoporosis, and infectious diseases of border health relevance. The team is using a \$38 million grant from the Valley Baptist Legacy Foundation to work collaboratively with Neuroscience, Neurology, Pediatrics, and Surgery to make UTRGV's SOM an epicenter for biomedical research in South Texas with sites in Brownsville, Harlingen, and McAllen. In 2024, STDOI was awarded two large NIH grants, \$10 million and \$8 million.

In addition, UTRGV SOM operates a Biomedical Research Facility, an 87,000 square foot medical research building in McAllen that includes 16 full wet labs for basic science research. This facility houses the first South Texas Center of Excellence on Cancer Research (ST-CECR) which has 6 core investigators and 11 lab personnel from diverse fields focusing on research to improve women's health and conduct translational research in hepatocellular, prostate, liver, breast, colorectal, pancreatic, and liver cancers. The research activities focus on hepatocellular (liver) and pancreatic cancers because they disproportionately affect the population living in the RGV as well as



**748 The University of Texas Rio Grande Valley School of Medicine**

---

investigating how cervical and related cancers affect Hispanic women in the RGV. Sadly, the cervical cancer mortality rate for women living along the border is 30% higher than non-border regions. In 2023, the ST-CECR received a \$6 million CPRIT grant, the first CPRIT-supported cancer research center in the region, focused on reducing cancer health disparities in the area, which has the nation's highest cancer incidence and mortality rate and, consequently, bears a disproportionate share of the cancer burden.

In October 2021, UTRGV's new Institute of Neurosciences (ION) opened in Harlingen, establishing a world-class center of excellence in brain health education, research, and personalized treatment serving the Rio Grande Valley community and beyond. ION faculty include nationally and internationally renowned scientists and master clinicians from several departments at the UTRGV SOM, including the Departments of Neuroscience, Human Genetics, Neurology, Psychiatry, Psychology, Behavioral Health, and Internal Medicine. Their expertise includes neurological and neuropsychiatric disorders such as epilepsy, stroke, Alzheimer's disease, major depression, bipolar disorder, early psychosis, addiction, multiple sclerosis, movement disorders and brain injuries among others. It also includes molecular geneticists, biomedical engineers, cognitive neuroscientists and expertise in neuroimaging and neuromodulations. ION houses the state's only National Institute on Aging (NIA)-designated Alzheimer's Disease Research Center as well as a Clinical Research Unit with a dedicated clinical research laboratory and sample processing space, and a dedicated research pharmacy in addition to several medical and behavioral examination rooms, and small and medium-size meeting rooms. ION also hosts the Department of Neurology and the Department of Neuroscience. The ION was made possible with Permanent University Funding, a private gift from The Valley Baptist Legacy Foundation and the donation of land from the South Texas Medical Foundation and the City of Harlingen.

In 2025, UT Health -RGV will welcome the opening of the new UTRGV Cancer and Surgery Center. When this facility opens, UTRGV will have the first comprehensive academic outpatient cancer treatment program in the region and will be positioned to rapidly expand its research portfolio in bio specimen and oncology clinical trials research. UTRGV has developed relationships with sister institutions, UT Houston and MD Anderson Cancer Center to partner on grant opportunities that will allow the RGV community access to investigational oral chemotherapy drugs for oncology indications.

UTRGV is investing heavily in research infrastructure to reach its goal of becoming an R1 – research-intensive university by 2030. The foundation for successful clinical research operations, including development of institutional policies specific to clinical research, clinical research standard operating procedures, training modules, billing compliance infrastructure, post-approval monitoring program, evaluating institutional research workflows and metrics, as well as grant and protocol writing assistance has been established.

**ACCREDITATION**

The UTRGV SOM was granted full accreditation for an indeterminate term in June of 2023 by the Liaison Committee on Medical Education (LCME) and will undergo a limited survey site visit in February 2025. The LCME survey team expects the school to have sufficient resources, staff, and faculty to continue delivery of the curriculum and meet the goals of its medical education program. UT Health RGV, the clinical enterprise for UTRGV's SOM and SOPM is still very young, and while it has rapidly expanded throughout the RGV and continues to grow its revenues, this growth is offset by investments made to hire additional providers and is slowed by the high-volume of Medicaid and uninsured patients in the RGV who disproportionately impact the revenues generated by this plan as compared to a plan located in a region with a high number of insured patients. Additionally, the RGV remains without a local healthcare district, and while UTRGV receives some funding from UT System and from local entities, PUF funding from UT System can only be used for capital expenditures, and local funding support commitments have now been met and have expired. With full accreditation, the number of students the SOM is allowed to admit will gradually increase from 55 to 75 starting in 2026 and from 75 to 100 in 2027, thereby allowing for more formula funding and decreasing the need for the current level of non-formula funding.

**Administrator's Statement**

8/14/2024 5:12:44PM

89th Regular Session, Agency Submission, Version 1  
Automated Budget and Evaluation System of Texas (ABEST)

---

**748 The University of Texas Rio Grande Valley School of Medicine**

---

**SCHOOL OF PODIATRIC MEDICINE**

The UTRGV School of Podiatric Medicine (SOPM), the first podiatric school in Texas, and only one of eleven in the nation, also plays an integral part in delivering quality health care services to residents living throughout the RGV. UTRGV SOPM's mission is to foster student success by inspiring, educating, and developing a diverse, compassionate student body fully prepared for podiatric residency training, becoming dedicated podiatric physicians, research scientists, public health professionals, and educators. The SOPM is needed in Texas to educate and train generations of podiatric physicians to diagnose, assess, manage, and treat conditions and diseases of the foot and ankle as well as serve the diabetic population in Texas, particularly in the Rio Grande Valley where diabetes rates are above the state average. Including a podiatrist in the care team of a diabetic patient can reduce patients' risk of amputation of lower limbs by up to 85%.

In October 2020, the THECB approved a request from UTRGV to create a Doctor of Podiatric Medicine (DPM) degree for the UTRGV School of Podiatric Medicine (authorized by Section 74.501 of the Education Code). In June 2022, the SOPM was granted candidacy by the Council on Podiatric Medical Education (CPME), and the Southern Association of Colleges and Schools Commission on Colleges (SACSCOC) likewise approved the Doctor of Podiatric Medicine (DPM) program. Once candidacy status was attained, recruitment was allowed to begin. There have now been three classes of students admitted for a total of 84 students. As only one of eleven schools of podiatric medicine and the first state-supported podiatry school in the nation, UTRGV is positioned to prepare students to provide the highest level of care by focusing on the safety, individual needs, and humanity of their patients. The RGV's environment and culture provide exceptional podiatric research opportunities, benefiting the area's population affected by diabetes, obesity, and cardiovascular diseases. The School of Podiatric Medicine is collaborating with the SOM and the South Texas Diabetes Obesity Institute to improve and provide high-quality healthcare in South Texas through evidence-based practice, and medical research. As part of each student's education and training, SOPM students will, as early as Fall 2024, participate in more health clinics across the region, thereby allowing students to administer care to some of the RGV's most underserved communities, while simultaneously benefitting from the educational opportunities that experiential learning provides.

The Formula Advisory Committee placed the SOPM in the HRI formula as well as the GME formula. Following the 87th legislative session, UTRGV used part of the Institutional Enhancement appropriations of the General Academic Institution to initiate hiring faculty and staff so that the SOPM could successfully establish a system of admissions, student services, finance/accounting, and curricular assessment. With the rapid growth of other new programs at UTRGV, however, that source of funding was no longer available. In the 88th Legislative Session, non-formula funding of \$12 million was appropriated to help support the SOPM, funding that is necessary until the school has enough students and generates enough clinical revenue through its participation in UT Health RGV to support itself with formula funding and tuition .

**REQUESTED FUNDING:**

Non-formula operational funding for SOM (\$19.95 million annually)

The UTRGV School of Medicine's highest priority is the continuation of the non-formula funding. These operating funds will be used to continue funding medical education for the full complement of medical students across all four years of medical education until the SOM reaches its maximum capacity as allowed by LCME. Appropriations for faculty salaries and benefits will continue to fund basic science and clinical teaching faculty required for Full Accreditation and to meet the curriculum requirements in all 4 years of medical school. Appropriations for staff salaries and benefits will support the increase in the number of faculty and the demand for increased student support services. Overall, state funds will be used to continue funding the medical education program, prepare for growth, and allow UTRGV's SOM to continue building a robust practice plan.

**Administrator's Statement**

8/14/2024 5:12:44PM

89th Regular Session, Agency Submission, Version 1  
Automated Budget and Evaluation System of Texas (ABEST)

---

**748 The University of Texas Rio Grande Valley School of Medicine**

---

Continuation of Non-Formula Support for the SOM's Cancer Center (\$950,000 annually)

The SOM also seeks continued non-formula support for its Cancer Center. The cervical cancer mortality rate for women living along the border is 30% higher than non-border regions. The UTRGV School of Medicine's South Texas Center of Excellence on Cancer Research (ST-CECR) has recruited 6 investigators and 11 lab personnel from diverse fields to focus on research to improve women's health and conduct other translational research in hepatocellular, prostate, liver, colorectal, pancreatic, and liver cancers. Researchers are housed at UTRGV School of Medicine's Biomedical Research facility in McAllen and are using their expertise in cell and molecular biology, immunology, nanoparticle technology and mouse model systems to examine the development, detection, and treatment of human cancers. This funding will be used to continue research to develop advanced diagnostic, imaging, and therapeutic modalities—including immunotherapies, vaccines, nanomedicine, and preventive strategies—for combating cancer in the Rio Grande Valley region.

Non-formula operational support for School of Podiatric Medicine (\$6 million annually)

SOPM appropriations are separate from SOM funding and would fund the costs for key faculty, staff and other programmatic costs associated with operating the SOPM's medical education program as the SOPM continues to build enrollment and its clinical enterprise. The SOPM seeks continued funding of \$6M annually as appropriations needed to support operations and employees until full formula funding and additional clinical revenue develops in order to meet requirements of stable and predictable revenue as the SOPM moves towards full accreditation.

Recognizing the need to expand the number of podiatrists available to care for a growing diabetic population, the 87th Legislature amended the Education Code to allow accredited Doctor of Podiatric Medicine (DPM) degree programs to qualify for Graduate Medical Education (GME) funding through the GME Expansion program. Aligning the SOPM funding with residency programs is vitally important for retaining podiatric physicians in Texas and for assuring accrediting agencies that students will continue their training beyond the undergraduate years. Just as critical is a stable and predictable revenue source that this funding can provide. In 2024, the SOPM received a planning grant from THECB GME Expansion grant to fund residency training in the RGV. The SOPM has signed a program letter of agreement with Valley Baptist Brownsville to be the co-site for the podiatric residency.

Exceptional Item: Funding for the SOM and the SOPM's Limb Preservation Program (\$2.5 million annually)

Diabetes, obesity, and related disorders are reaching epidemic proportions in Texas and within the Rio Grande Valley. Behavioral and lifestyle interventions have been largely unsuccessful in addressing the epidemic of metabolic disease indicating the urgent need for improved preventions, treatments and management of its consequences. Untreated and uncontrolled diabetes leads to numerous limb conditions that unfortunately lead to amputation and devastating life consequences. In 2019, in Cameron County alone, hospitals recorded 281 diabetic amputations in one year – 50% higher than the national rate, according to the Centers for Disease Control and Prevention.

UTRGV seeks \$5 million over the biennium to establish a Limb Preservation Program to treat diabetic patients at-risk for lower extremity disease and amputations. This appropriation would fund a multidisciplinary team of nurses, allied health professionals and physicians in various multi-specialties of endocrinology, behavioral health, infectious disease, endocrinology, podiatry and vascular surgery to coordinate care for patients with complex limb threatening disease.

**Administrator's Statement**

8/14/2024 5:12:44PM

89th Regular Session, Agency Submission, Version 1  
Automated Budget and Evaluation System of Texas (ABEST)

---

**748 The University of Texas Rio Grande Valley School of Medicine**

---

Exceptional Item: Additional funding for SOM's Cancer and Surgery Center (\$2.5 million annually)

UTRGV's SOM seeks \$5M over the biennium to support the operations of new Cancer Center facilities opening in 2025 in McAllen. UT Health RGV, the clinical arm of UTRGV SOM, will operate the clinical oncology program, the first comprehensive academic cancer treatment program in the region. Programming for the Center includes clinical, training, and clinical research space for medical oncology and infusion, surgical oncology, radiation oncology, orthopedics, diagnostic imaging, operating and procedure rooms, and rehabilitation therapies.

Funds appropriated will be used to support the recruitment and hiring of physician faculty trained in oncology and clinical cancer research, as well as staff to support clinical operations and clinical research. The Cancer Center will hire 58 new faculty and staff supported in part with this requested funding for approximately 17 FTEs, increasing the region's capacity to fight cancer and elevate the standard of care across the Rio Grande Valley.

To reflect the clinical component of strategy, we are requesting that Strategy D.1.2 Cancer Immunology Center be renamed Cancer Center/Cancer Research in the bill pattern for the UTRGV School of Medicine.

**CAPITAL CONSTRUCTION ASSISTANCE PROJECTS (CCAP)**

Should the Legislature consider funding for CCAP projects, UTRGV will request funding for a Limb Preservation Center (LPC) as a component of the Diabetes Center of Excellence (DCE). The facility will be dedicated to preventing limb loss and restoring function for diabetic patients facing the imminent threat of amputation. Through patient education, early identification of at-risk individuals, and specialized clinical care, the Center will empower patients and their families with the tools and support needed to preserve limb health and enhance quality of life.

The Center's multidisciplinary approach with a team of healthcare professionals, including orthopedic surgeons, vascular surgeons, wound care specialists, podiatrists, physical therapists, and other experts, ensures that all limb preservation and rehabilitation aspects are considered.

**POLICY ON CRIMINAL HISTORY RECORDS**

UTRGV conducts employment criminal background checks as required by Government Code Section 411.094 and Education Code Section 51.215. UTRGV's policy is to obtain criminal history information on finalists considered for employment in security sensitive positions.

**CONCLUSION**

Since opening the doors of the UTRGV SOM in 2016, UTRGV has strived to expand healthcare that significantly improves the overall health and well-being of the Rio Grande Valley. For nearly 80 years, community, business, and state leaders worked tirelessly to realize a first-class institution in South Texas that could train future physician scientists, find new treatments for diseases impacting the local community, and provide high-quality primary and specialty care close to home. With the state's support, along with support from other entities, the faculty, staff, students, and residents of the UTRGV SOM have proudly delivered on that promise. UTRGV's SOM has graduated five cohorts of medical students that have gone on to train at top hospitals in the RGV, in Texas and across the country. Growth has also occurred in our research programs and expenditures with the development of new cancer immunology and neuroscience programs, and there is much promise in what lies ahead with

**Administrator's Statement**

8/14/2024 5:12:44PM

89th Regular Session, Agency Submission, Version 1  
Automated Budget and Evaluation System of Texas (ABEST)

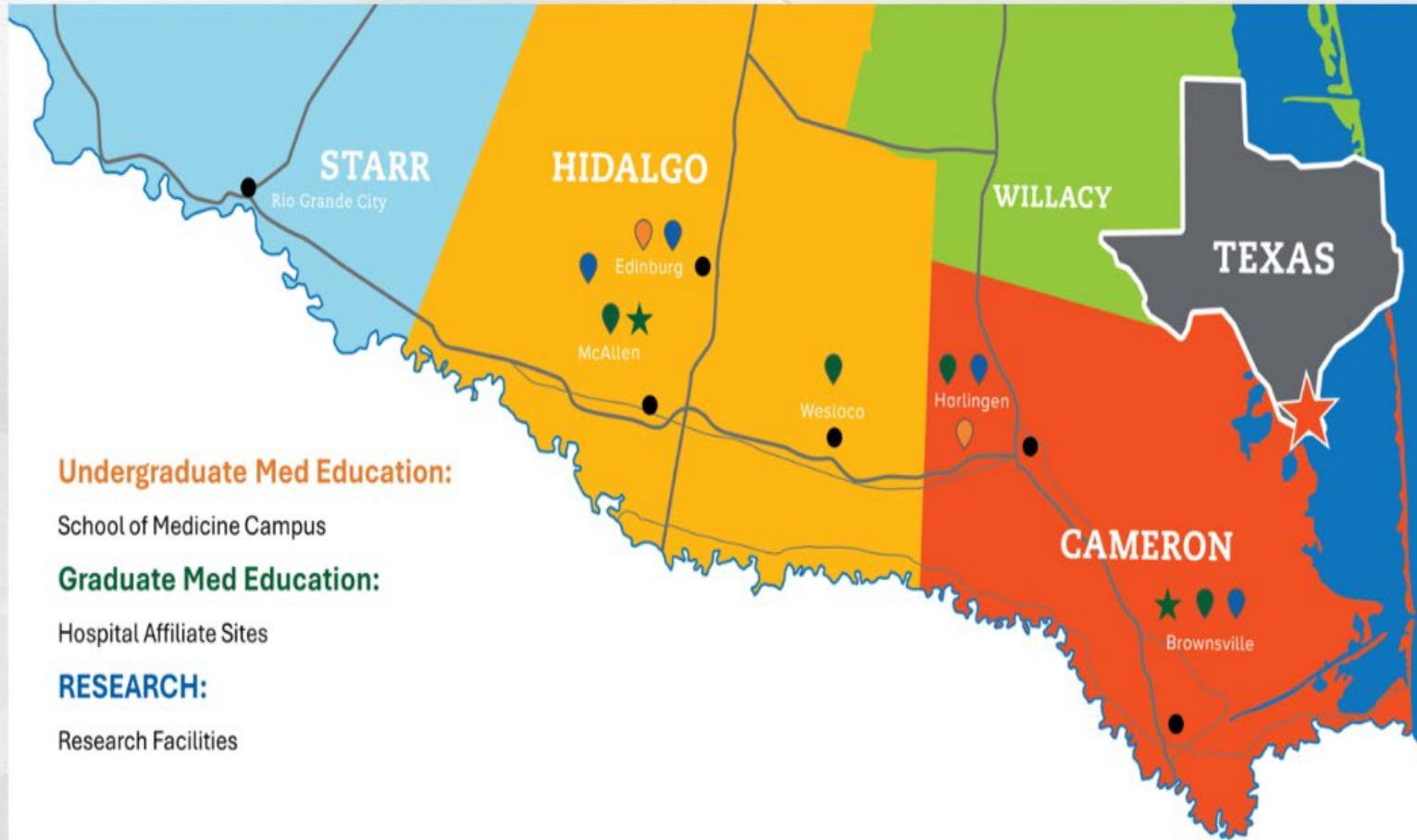
---

**748 The University of Texas Rio Grande Valley School of Medicine**

---

expanding care for cancer patients in the development of the UTRGV Cancer and Surgery Center. Now, UTRGV is operating its School of Podiatric Medicine, the first in Texas and only one of eleven in the nation, that is not only expanding educational opportunities for young people in the RGV but also training professionals to save limbs and lives of Texans so they can go on to lead more healthy and productive lives. UTRGV is grateful for the support from the State of Texas and ongoing support will allow us to continue our important work across all these mission areas as we make progress on building a healthier Rio Grande Valley.

# Our Reach in the Rio Grande Valley



# Educating Texas Physician Workforce

**220**  
STUDENTS



**99** **121**



**46%**  
Rio Grande Valley



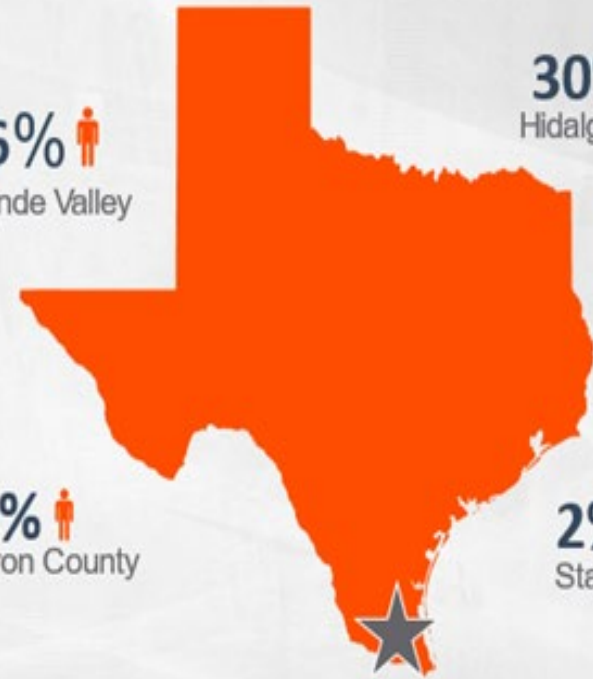
**30%**  
Hidalgo County



**14%**  
Cameron County



**2%**  
Starr County



# Training Next Generation of Physicians

 **56%**

Of UTRGV residents  
stay in Texas to  
practice.

 **408**

Total GME Graduates  
Since 2016

 **59%**

Of UTRGV residents staying  
in Texas remain  
in the Rio Grande Valley to  
practice.



## WHAT'S NEW AT UTRGV SOPM

- Currently 84 students in three (3) classes
- Residency program in the RGV begins in 2025
- Inaugural class to start community clinics in clerkships
- 660 new patients in seven (7) months since launching clinical enterprise



### DIABETIC FOOT HEALTH

- Up to **25%** of those with diabetes will develop a foot ulcer.
- The estimated annual U.S. burden of diabetic foot ulcers is *at least* **\$15 BILLION**.

### COST OF DIABETES IN THE U.S.

- Diabetes costs are **\$412.9 BILLION** annually (as of 2022).
- **\$306.6 BILLION** is in direct medical costs.



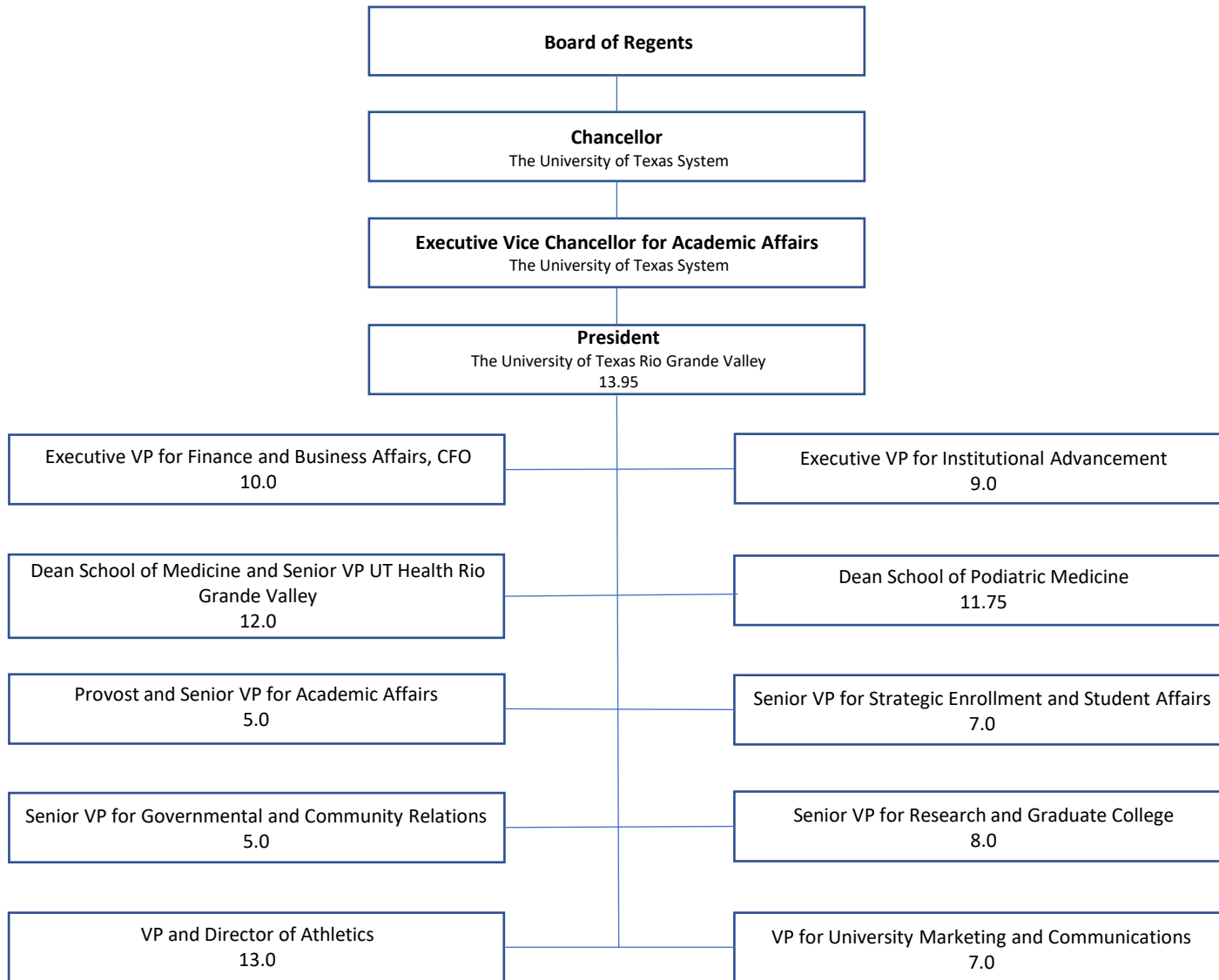
### INVESTMENT IN CARE

- One of every four healthcare dollars spent in the U.S. is towards diabetes.
- Just \$1 invested in care by a podiatrist results in **\$27-\$51 of savings** for the healthcare system among patients with commercial insurance within three years.
- Every \$1 invested in podiatry care results in **\$9-\$13 of savings** over the course of three years.



### OUTSMART DIABETES

- Podiatric medical care can reduce amputation rates up to **80%**.
- The inclusion of care provided by podiatrists for those with diabetes alone will save the healthcare system **\$3.5 BILLION per year**.



ORGANIZATIONAL CHART (continued)  
The University of Texas Rio Grande Valley

The **President** has overall authority and responsibility for the university.

The **Executive Vice President for Finance and Business Affairs, CFO** is the chief fiscal officer and provides for the management of the institution's fiscal affairs.

The **Executive Vice President for Institutional Advancement** serves as the university's chief development officer, managing the university's fundraising efforts.

The **Dean School Of Medicine and Senior Vice President UT Health Rio Grande Valley** oversees the overall management of the School of Medicine and the UT Health RGV clinical practice.

The **Dean School of Podiatric Medicine** oversees the overall management of the School of Podiatric Medicine, the first Podiatric school in Texas.

The **Provost and Senior VP for Academic Affairs** works directly with the President on all institutional initiatives and has direct oversight for the nine academic and health colleges as well as for the areas of student success, curriculum and institutional assessment, institutional accreditation and program development, faculty affairs, and bilingual integration, among others.

The **Senior Vice President for Strategic Enrollment and Student Affairs** oversees recruitment, financial aid, undergraduate admissions, and registrar operations.

The **Vice President for Governmental & Community Relations** is responsible for community outreach programs and serves as the liaison for communications with governmental and agency officials at all levels.

The **Senior Vice President for Research and Graduate College** is responsible for research efforts as well as economic development activities.

The **VP and Director of Athletics** is the chief administrator for the university's athletics program, providing leadership and strategic planning, as well as ensuring compliance with applicable rules and regulations.

The **Vice President for University Marketing and Communications** is responsible for marketing strategy and coordination, creative services, digital marketing and analytics, news and internal communications, strategic events, and public relations.

**Budget Overview - Biennial Amounts**  
**89th Regular Session, Agency Submission, Version 1**  
Automated Budget and Evaluation System of Texas (ABEST)

748 The University of Texas Rio Grande Valley School of Medicine  
Appropriation Years: 2026-27

	GENERAL REVENUE FUNDS		GR DEDICATED		FEDERAL FUNDS		OTHER FUNDS		ALL FUNDS		EXCEPTIONAL ITEM FUNDS	
	2024-25	2026-27	2024-25	2026-27	2024-25	2026-27	2024-25	2026-27	2024-25	2026-27	2026-27	
<b>Goal: 1. Provide Instructional and Operations Support</b>												
1.1.1. Medical Education	16,575,621		1,992,443						18,568,064			
1.1.2. Podiatric Education	2,682,061								2,682,061			
1.1.3. Graduate Medical Education	3,649,206								3,649,206			
1.2.1. Staff Group Insurance Premiums			992,526	276,000					992,526	276,000		
1.3.1. Texas Public Education Grants			572,408	582,822					572,408	582,822		
<b>Total, Goal</b>	<b>22,906,888</b>		<b>3,557,377</b>	<b>858,822</b>					<b>26,464,265</b>	<b>858,822</b>		
<b>Goal: 2. Provide Research Support</b>												
2.1.1. Research Enhancement	3,315,714								3,315,714			
<b>Total, Goal</b>	<b>3,315,714</b>								<b>3,315,714</b>			
<b>Goal: 3. Provide Infrastructure Support</b>												
3.1.1. E&G Space Support	3,468,334								3,468,334			
3.2.1. Ccap Revenue Bonds												4,010,000
<b>Total, Goal</b>	<b>3,468,334</b>								<b>3,468,334</b>			<b>4,010,000</b>
<b>Goal: 4. Provide Non-Formula Support</b>												
4.1.1. School Of Medicine	39,899,999	39,899,999							39,899,999	39,899,999		
4.1.2. Cancer Immunology Center	2,215,896	1,900,000							2,215,896	1,900,000		5,000,000
4.1.3. School Of Podiatric Medicine	12,000,000	12,000,000							12,000,000	12,000,000		
4.2.1. Exceptional Item Request												5,000,000
<b>Total, Goal</b>	<b>54,115,895</b>	<b>53,799,999</b>							<b>54,115,895</b>	<b>53,799,999</b>		<b>10,000,000</b>
<b>Goal: 5. Tobacco Funds</b>												
5.1.1. Tobacco-Permanent Health Fund							2,843,185	2,606,052	2,843,185	2,606,052		
<b>Total, Goal</b>							<b>2,843,185</b>	<b>2,606,052</b>	<b>2,843,185</b>	<b>2,606,052</b>		
<b>Total, Agency</b>	<b>83,806,831</b>	<b>53,799,999</b>	<b>3,557,377</b>	<b>858,822</b>			<b>2,843,185</b>	<b>2,606,052</b>	<b>90,207,393</b>	<b>57,264,873</b>		<b>14,010,000</b>
<b>Total FTEs</b>									<b>545.2</b>	<b>545.2</b>		<b>42.1</b>

2.A. Summary of Base Request by Strategy

89th Regular Session, Agency Submission, Version 1

Automated Budget and Evaluation System of Texas (ABEST)

748 The University of Texas Rio Grande Valley School of Medicine

Goal / Objective / STRATEGY	Exp 2023	Est 2024	Bud 2025	Req 2026	Req 2027
<b>1</b> Provide Instructional and Operations Support					
<b>1</b> <i>Instructional Programs</i>					
<b>1</b> MEDICAL EDUCATION (1)	9,617,849	8,925,487	9,642,577	0	0
<b>2</b> PODIATRIC EDUCATION	0	1,438,724	1,243,337	0	0
<b>3</b> GRADUATE MEDICAL EDUCATION (1)	1,289,493	1,534,258	2,114,948	0	0
<b>2</b> <i>Operations - Staff Benefits</i>					
<b>1</b> STAFF GROUP INSURANCE PREMIUMS	739,971	854,526	138,000	138,000	138,000
<b>3</b> <i>Operations - Statutory Funds</i>					
<b>1</b> TEXAS PUBLIC EDUCATION GRANTS	188,371	280,997	291,411	291,411	291,411
TOTAL, GOAL <b>1</b>	<b>\$11,835,684</b>	<b>\$13,033,992</b>	<b>\$13,430,273</b>	<b>\$429,411</b>	<b>\$429,411</b>
<b>2</b> Provide Research Support					
<b>1</b> <i>Research Activities</i>					
<b>1</b> RESEARCH ENHANCEMENT	1,676,339	1,657,857	1,657,857	0	0

(1) - Formula funded strategies are not requested in 2026-27 because amounts are not determined by institutions.

2.A. Summary of Base Request by Strategy

89th Regular Session, Agency Submission, Version 1

Automated Budget and Evaluation System of Texas (ABEST)

748 The University of Texas Rio Grande Valley School of Medicine

Goal / Objective / STRATEGY		Exp 2023	Est 2024	Bud 2025	Req 2026	Req 2027
<b>TOTAL, GOAL</b>	<b>2</b>	<b>\$1,676,339</b>	<b>\$1,657,857</b>	<b>\$1,657,857</b>	<b>\$0</b>	<b>\$0</b>
<b>3</b> Provide Infrastructure Support						
<b>1</b> Operations and Maintenance						
<b>1</b> E&G SPACE SUPPORT (1)		1,605,610	1,734,167	1,734,167	0	0
<b>2</b> Infrastructure Support						
<b>1</b> CCAP REVENUE BONDS		0	0	0	0	0
<b>TOTAL, GOAL</b>	<b>3</b>	<b>\$1,605,610</b>	<b>\$1,734,167</b>	<b>\$1,734,167</b>	<b>\$0</b>	<b>\$0</b>
<b>4</b> Provide Non-Formula Support						
<b>1</b> Instruction/Operation						
<b>1</b> SCHOOL OF MEDICINE		19,950,000	19,950,000	19,949,999	19,950,000	19,949,999
<b>2</b> CANCER IMMUNOLOGY CENTER		950,000	1,260,330	955,566	950,000	950,000
<b>3</b> SCHOOL OF PODIATRIC MEDICINE		0	6,000,000	6,000,000	6,000,000	6,000,000
<b>2</b> Exceptional Item Request						

(1) - Formula funded strategies are not requested in 2026-27 because amounts are not determined by institutions.

2.A. Summary of Base Request by Strategy

8/14/2024 5:12:57PM

89th Regular Session, Agency Submission, Version 1

Automated Budget and Evaluation System of Texas (ABEST)

748 The University of Texas Rio Grande Valley School of Medicine

Goal / Objective / STRATEGY	Exp 2023	Est 2024	Bud 2025	Req 2026	Req 2027
<b>1 EXCEPTIONAL ITEM REQUEST</b>	0	0	0	0	0
<b>TOTAL, GOAL 4</b>	<b>\$20,900,000</b>	<b>\$27,210,330</b>	<b>\$26,905,565</b>	<b>\$26,900,000</b>	<b>\$26,899,999</b>
<b>5 Tobacco Funds</b>					
<b>1 Tobacco Earnings for Research</b>					
<b>1 TOBACCO-PERMANENT HEALTH FUND</b>	1,205,702	1,540,159	1,303,026	1,303,026	1,303,026
<b>TOTAL, GOAL 5</b>	<b>\$1,205,702</b>	<b>\$1,540,159</b>	<b>\$1,303,026</b>	<b>\$1,303,026</b>	<b>\$1,303,026</b>
<b>TOTAL, AGENCY STRATEGY REQUEST</b>	<b>\$37,223,335</b>	<b>\$45,176,505</b>	<b>\$45,030,888</b>	<b>\$28,632,437</b>	<b>\$28,632,436</b>
<b>TOTAL, AGENCY RIDER APPROPRIATIONS REQUEST*</b>				<b>\$0</b>	<b>\$0</b>
<b>GRAND TOTAL, AGENCY REQUEST</b>	<b>\$37,223,335</b>	<b>\$45,176,505</b>	<b>\$45,030,888</b>	<b>\$28,632,437</b>	<b>\$28,632,436</b>

2.A. Summary of Base Request by Strategy

8/14/2024 5:12:57PM

89th Regular Session, Agency Submission, Version 1

Automated Budget and Evaluation System of Texas (ABEST)

748 The University of Texas Rio Grande Valley School of Medicine

Goal / Objective / STRATEGY	Exp 2023	Est 2024	Bud 2025	Req 2026	Req 2027
<u>METHOD OF FINANCING:</u>					
<b>General Revenue Funds:</b>					
1 General Revenue Fund	34,603,790	41,903,416	41,903,415	26,900,000	26,899,999
<b>SUBTOTAL</b>	<b>\$34,603,790</b>	<b>\$41,903,416</b>	<b>\$41,903,415</b>	<b>\$26,900,000</b>	<b>\$26,899,999</b>
<b>General Revenue Dedicated Funds:</b>					
770 Est. Other Educational & General	1,413,843	1,732,930	1,824,447	429,411	429,411
<b>SUBTOTAL</b>	<b>\$1,413,843</b>	<b>\$1,732,930</b>	<b>\$1,824,447</b>	<b>\$429,411</b>	<b>\$429,411</b>
<b>Other Funds:</b>					
810 Perm Health Fund Higher Ed, est	1,205,702	1,540,159	1,303,026	1,303,026	1,303,026
<b>SUBTOTAL</b>	<b>\$1,205,702</b>	<b>\$1,540,159</b>	<b>\$1,303,026</b>	<b>\$1,303,026</b>	<b>\$1,303,026</b>
<b>TOTAL, METHOD OF FINANCING</b>	<b>\$37,223,335</b>	<b>\$45,176,505</b>	<b>\$45,030,888</b>	<b>\$28,632,437</b>	<b>\$28,632,436</b>

\*Rider appropriations for the historical years are included in the strategy amounts.



**2.B. Summary of Base Request by Method of Finance**  
 89th Regular Session, Agency Submission, Version 1  
 Automated Budget and Evaluation System of Texas (ABEST)

8/14/2024 5:12:58PM

Agency code: **748**

Agency name: **The University of Texas Rio Grande Valley School of Medicine**

<b>METHOD OF FINANCING</b>		<b>Exp 2023</b>	<b>Est 2024</b>	<b>Bud 2025</b>	<b>Req 2026</b>	<b>Req 2027</b>
<b><u>GENERAL REVENUE</u></b>						
<b><u>1</u> General Revenue Fund</b>						
<i>REGULAR APPROPRIATIONS</i>						
Regular Appropriations from MOF Table (2022-23 GAA)						
		\$34,066,972	\$0	\$0	\$0	\$0
Regular Appropriations from MOF Table (2024-25 GAA)						
		\$0	\$41,903,416	\$41,903,415	\$0	\$0
Regular Appropriations from MOF Table						
		\$0	\$0	\$0	\$26,900,000	\$26,899,999
<i>RIDER APPROPRIATION</i>						
Article IX, Sec. 17.47 Funding Adjustments (2022-23 GAA)						
		\$536,818	\$0	\$0	\$0	\$0
<b>TOTAL,</b>	<b>General Revenue Fund</b>	<b>\$34,603,790</b>	<b>\$41,903,416</b>	<b>\$41,903,415</b>	<b>\$26,900,000</b>	<b>\$26,899,999</b>
<b>TOTAL, ALL</b>	<b>GENERAL REVENUE</b>	<b>\$34,603,790</b>	<b>\$41,903,416</b>	<b>\$41,903,415</b>	<b>\$26,900,000</b>	<b>\$26,899,999</b>

**GENERAL REVENUE FUND - DEDICATED**

**2.B. Summary of Base Request by Method of Finance**

8/14/2024 5:12:58PM

89th Regular Session, Agency Submission, Version 1

Automated Budget and Evaluation System of Texas (ABEST)

Agency code: <b>748</b>		Agency name: <b>The University of Texas Rio Grande Valley School of Medicine</b>				
<b>METHOD OF FINANCING</b>	<b>Exp 2023</b>	<b>Est 2024</b>	<b>Bud 2025</b>	<b>Req 2026</b>	<b>Req 2027</b>	
<b><u>GENERAL REVENUE FUND - DEDICATED</u></b>						
<b><u>770</u> GR Dedicated - Estimated Other Educational and General Income Account No. 770</b>						
<i>REGULAR APPROPRIATIONS</i>						
Regular Appropriations from MOF Table (2022-23 GAA)						
	\$1,211,648	\$0	\$0	\$0	\$0	
Regular Appropriations from MOF Table (2024-25 GAA)						
	\$0	\$1,309,048	\$1,309,048	\$0	\$0	
Regular Appropriations from MOF Table						
	\$0	\$0	\$0	\$429,411	\$429,411	
<i>BASE ADJUSTMENT</i>						
Revised Receipts						
	\$202,195	\$423,882	\$515,399	\$0	\$0	
<b>TOTAL,</b>	<b>GR Dedicated - Estimated Other Educational and General Income Account No. 770</b>					
	<b>\$1,413,843</b>	<b>\$1,732,930</b>	<b>\$1,824,447</b>	<b>\$429,411</b>	<b>\$429,411</b>	
<b>TOTAL GENERAL REVENUE FUND - DEDICATED - 704, 708 &amp; 770</b>						
	<b>\$1,413,843</b>	<b>\$1,732,930</b>	<b>\$1,824,447</b>	<b>\$429,411</b>	<b>\$429,411</b>	

**2.B. Summary of Base Request by Method of Finance**  
 89th Regular Session, Agency Submission, Version 1  
 Automated Budget and Evaluation System of Texas (ABEST)

8/14/2024 5:12:58PM

Agency code:	<b>748</b>	Agency name:	<b>The University of Texas Rio Grande Valley School of Medicine</b>			
<b>METHOD OF FINANCING</b>		<b>Exp 2023</b>	<b>Est 2024</b>	<b>Bud 2025</b>	<b>Req 2026</b>	<b>Req 2027</b>
<b>TOTAL, ALL GENERAL REVENUE FUND - DEDICATED</b>		<b>\$1,413,843</b>	<b>\$1,732,930</b>	<b>\$1,824,447</b>	<b>\$429,411</b>	<b>\$429,411</b>
<b>TOTAL, GR &amp; GR-DEDICATED FUNDS</b>		<b>\$36,017,633</b>	<b>\$43,636,346</b>	<b>\$43,727,862</b>	<b>\$27,329,411</b>	<b>\$27,329,410</b>
<b><u>OTHER FUNDS</u></b>						
<b>810</b>	Permanent Health Fund for Higher Education, estimated					
	<i>REGULAR APPROPRIATIONS</i>					
	Regular Appropriations from MOF Table (2022-23 GAA)	\$1,107,979	\$0	\$0	\$0	\$0
	Regular Appropriations from MOF Table (2024-25 GAA)	\$0	\$1,189,157	\$1,189,157	\$0	\$0
	Regular Appropriations from MOF Table	\$0	\$0	\$0	\$1,303,026	\$1,303,026
	<i>UNEXPENDED BALANCES AUTHORITY</i>					
	Art. III, Rider 6 (2022-2023)	\$312,781	\$0	\$0	\$0	\$0
	Art. III, Rider 6 (2024-2025)					

**2.B. Summary of Base Request by Method of Finance**  
 89th Regular Session, Agency Submission, Version 1  
 Automated Budget and Evaluation System of Texas (ABEST)

8/14/2024 5:12:58PM

Agency code: <b>748</b>		Agency name: <b>The University of Texas Rio Grande Valley School of Medicine</b>				
<b>METHOD OF FINANCING</b>		<b>Exp 2023</b>	<b>Est 2024</b>	<b>Bud 2025</b>	<b>Req 2026</b>	<b>Req 2027</b>
<b><u>OTHER FUNDS</u></b>						
		\$ (301,568)	\$ 301,568	\$ 0	\$ 0	\$ 0
<i>BASE ADJUSTMENT</i>						
	Revised Receipts - Distribution	\$ 81,178	\$ 44,034	\$ 113,869	\$ 0	\$ 0
	Revised Receipts - Interest	\$ 5,332	\$ 5,400	\$ 0	\$ 0	\$ 0
<b>TOTAL,</b>	<b>Permanent Health Fund for Higher Education, estimated</b>	<b>\$1,205,702</b>	<b>\$1,540,159</b>	<b>\$1,303,026</b>	<b>\$1,303,026</b>	<b>\$1,303,026</b>
<b>TOTAL, ALL</b>	<b>OTHER FUNDS</b>	<b>\$1,205,702</b>	<b>\$1,540,159</b>	<b>\$1,303,026</b>	<b>\$1,303,026</b>	<b>\$1,303,026</b>
<b>GRAND TOTAL</b>		<b>\$37,223,335</b>	<b>\$45,176,505</b>	<b>\$45,030,888</b>	<b>\$28,632,437</b>	<b>\$28,632,436</b>

**2.B. Summary of Base Request by Method of Finance**

8/14/2024 5:12:58PM

89th Regular Session, Agency Submission, Version 1

Automated Budget and Evaluation System of Texas (ABEST)

METHOD OF FINANCING	Exp 2023	Est 2024	Bud 2025	Req 2026	Req 2027
<p>Agency code: <b>748</b> Agency name: <b>The University of Texas Rio Grande Valley School of Medicine</b></p>					
<b>FULL-TIME-EQUIVALENT POSITIONS</b>					
REGULAR APPROPRIATIONS					
Regular Appropriations from MOF Table (2022-23 GAA)	354.2	0.0	0.0	0.0	0.0
Regular Appropriations from MOF Table (2024-25 GAA)	0.0	545.2	545.2	0.0	0.0
Regular Appropriation	0.0	0.0	0.0	545.2	545.2
RIDER APPROPRIATION					
Art IX, Sec 6.10(a)(2), Board or Administrator FTE Adjustment (2022-23 GAA)	35.9	0.0	0.0	0.0	0.0
Article IX, Sec. 17.47 Funding Adjustments (2022-23 GAA)	4.3	0.0	0.0	0.0	0.0
REQUEST TO EXCEED ADJUSTMENTS					
Unauthorized Number Over (Below) Cap	127.9	(48.7)	0.0	0.0	0.0
<b>TOTAL, ADJUSTED FTES</b>	<b>522.3</b>	<b>496.5</b>	<b>545.2</b>	<b>545.2</b>	<b>545.2</b>

**NUMBER OF 100% FEDERALLY FUNDED FTEs**

2.C. Summary of Base Request by Object of Expense

8/14/2024 5:12:58PM

89th Regular Session, Agency Submission, Version 1  
Automated Budget and Evaluation System of Texas (ABEST)

748 The University of Texas Rio Grande Valley School of Medicine

OBJECT OF EXPENSE	Exp 2023	Est 2024	Bud 2025	BL 2026	BL 2027
1001 SALARIES AND WAGES	\$20,404,290	\$22,400,133	\$25,841,964	\$12,425,941	\$12,425,940
1002 OTHER PERSONNEL COSTS	\$178,666	\$358,814	\$247,707	\$14,860	\$14,860
1005 FACULTY SALARIES	\$14,502,958	\$16,879,077	\$14,915,166	\$13,581,066	\$13,581,066
2003 CONSUMABLE SUPPLIES	\$39,508	\$0	\$0	\$0	\$0
2005 TRAVEL	\$0	\$64,760	\$0	\$0	\$0
2006 RENT - BUILDING	\$805,000	\$0	\$0	\$0	\$0
2007 RENT - MACHINE AND OTHER	\$351	\$0	\$0	\$0	\$0
2008 DEBT SERVICE	\$0	\$0	\$0	\$0	\$0
2009 OTHER OPERATING EXPENSE	\$1,292,562	\$5,473,721	\$4,026,051	\$2,610,570	\$2,610,570
<b>OOE Total (Excluding Riders)</b>	<b>\$37,223,335</b>	<b>\$45,176,505</b>	<b>\$45,030,888</b>	<b>\$28,632,437</b>	<b>\$28,632,436</b>
<b>OOE Total (Riders)</b>					
<b>Grand Total</b>	<b>\$37,223,335</b>	<b>\$45,176,505</b>	<b>\$45,030,888</b>	<b>\$28,632,437</b>	<b>\$28,632,436</b>

2.D. Summary of Base Request Objective Outcomes

89th Regular Session, Agency Submission, Version 1  
 Automated Budget and Evaluation system of Texas (ABEST)

748 The University of Texas Rio Grande Valley School of Medicine

Goal/ Objective / Outcome	Exp 2023	Est 2024	Bud 2025	BL 2026	BL 2027
1 Provide Instructional and Operations Support					
1 Instructional Programs					
KEY 1 % Medical School Students Passing NLE Part 1 or Part 2 on First Try	88.00%	86.00%	90.00%	90.00%	90.00%
2 % Medical School Graduates Practicing Primary Care in Texas	0.00%	0.00%	0.00%	0.00%	0.00%
3 % Med School Grads Practicing Primary Care in Texas Underserved Area	0.00%	0.00%	0.00%	0.00%	0.00%
KEY 4 Percent of Medical Residency Completers Practicing in Texas	55.00%	62.00%	55.00%	55.00%	55.00%
5 Total Uncompensated Care Provided by Faculty	27,008,270.00	24,116,492.00	25,000,000.00	26,000,000.00	27,000,000.00
12 % Medical School Graduates Practicing in Texas	0.00%	0.00%	0.00%	0.00%	0.00%
2 Provide Research Support					
1 Research Activities					
KEY 1 Total External Research Expenditures	21,400,000.00	650,000.00	15,000,000.00	16,000,000.00	17,000,000.00
2 External Research Expends As % of State Appropriations for Research	1,321.00%	39.00%	904.00%	964.00%	1,024.00%

**2.E. Summary of Exceptional Items Request**  
 89th Regular Session, Agency Submission, Version 1  
 Automated Budget and Evaluation System of Texas (ABEST)

DATE: 8/14/2024  
 TIME : 5:12:59PM

Agency code: 748

Agency name: The University of Texas Rio Grande Valley School of Medicine

Priority	Item	2026			2027			Biennium		
		GR and GR/GR Dedicated	All Funds	FTEs	GR and GR Dedicated	All Funds	FTEs	GR and GR Dedicated	All Funds	
1	Limb Preservation Program	\$2,500,000	\$2,500,000	25.0	\$2,500,000	\$2,500,000	25.0	\$5,000,000	\$5,000,000	
2	Cancer Immunology Center	\$2,500,000	\$2,500,000	17.1	\$2,500,000	\$2,500,000	17.1	\$5,000,000	\$5,000,000	
3	Limb Preservation Center	\$2,005,000	\$2,005,000		\$2,005,000	\$2,005,000		\$4,010,000	\$4,010,000	
<b>Total, Exceptional Items Request</b>		<b>\$7,005,000</b>	<b>\$7,005,000</b>	<b>42.1</b>	<b>\$7,005,000</b>	<b>\$7,005,000</b>	<b>42.1</b>	<b>\$14,010,000</b>	<b>\$14,010,000</b>	
<b>Method of Financing</b>										
	General Revenue	\$7,005,000	\$7,005,000		\$7,005,000	\$7,005,000		\$14,010,000	\$14,010,000	
	General Revenue - Dedicated									
	Federal Funds									
	Other Funds									
		<b>\$7,005,000</b>	<b>\$7,005,000</b>		<b>\$7,005,000</b>	<b>\$7,005,000</b>		<b>\$14,010,000</b>	<b>\$14,010,000</b>	
<b>Full Time Equivalent Positions</b>				<b>42.1</b>				<b>42.1</b>		
<b>Number of 100% Federally Funded FTEs</b>										



**2.F. Summary of Total Request by Strategy**  
 89th Regular Session, Agency Submission, Version 1  
 Automated Budget and Evaluation System of Texas (ABEST)

DATE : 8/14/2024  
 TIME : 5:12:59PM

Agency code: 748 Agency name: The University of Texas Rio Grande Valley School of Medicine

<b>Goal/Objective/STRATEGY</b>	<b>Base 2026</b>	<b>Base 2027</b>	<b>Exceptional 2026</b>	<b>Exceptional 2027</b>	<b>Total Request 2026</b>	<b>Total Request 2027</b>
<b>1 Provide Instructional and Operations Support</b>						
<i>1 Instructional Programs</i>						
1 MEDICAL EDUCATION	\$0	\$0	\$0	\$0	\$0	\$0
2 PODIATRIC EDUCATION	0	0	0	0	0	0
3 GRADUATE MEDICAL EDUCATION	0	0	0	0	0	0
<i>2 Operations - Staff Benefits</i>						
1 STAFF GROUP INSURANCE PREMIUMS	138,000	138,000	0	0	138,000	138,000
<i>3 Operations - Statutory Funds</i>						
1 TEXAS PUBLIC EDUCATION GRANTS	291,411	291,411	0	0	291,411	291,411
<b>TOTAL, GOAL 1</b>	<b>\$429,411</b>	<b>\$429,411</b>	<b>\$0</b>	<b>\$0</b>	<b>\$429,411</b>	<b>\$429,411</b>
<b>2 Provide Research Support</b>						
<i>1 Research Activities</i>						
1 RESEARCH ENHANCEMENT	0	0	0	0	0	0
<b>TOTAL, GOAL 2</b>	<b>\$0</b>	<b>\$0</b>	<b>\$0</b>	<b>\$0</b>	<b>\$0</b>	<b>\$0</b>
<b>3 Provide Infrastructure Support</b>						
<i>1 Operations and Maintenance</i>						
1 E&G SPACE SUPPORT	0	0	0	0	0	0
<i>2 Infrastructure Support</i>						
1 CCAP REVENUE BONDS	0	0	2,005,000	2,005,000	2,005,000	2,005,000
<b>TOTAL, GOAL 3</b>	<b>\$0</b>	<b>\$0</b>	<b>\$2,005,000</b>	<b>\$2,005,000</b>	<b>\$2,005,000</b>	<b>\$2,005,000</b>

**2.F. Summary of Total Request by Strategy**  
 89th Regular Session, Agency Submission, Version 1  
 Automated Budget and Evaluation System of Texas (ABEST)

DATE : 8/14/2024  
 TIME : 5:12:59PM

Agency code: 748 Agency name: The University of Texas Rio Grande Valley School of Medicine

<b>Goal/Objective/STRATEGY</b>	<b>Base 2026</b>	<b>Base 2027</b>	<b>Exceptional 2026</b>	<b>Exceptional 2027</b>	<b>Total Request 2026</b>	<b>Total Request 2027</b>
<b>4 Provide Non-Formula Support</b>						
<i>1 Instruction/Operation</i>						
1 SCHOOL OF MEDICINE	\$19,950,000	\$19,949,999	\$0	\$0	\$19,950,000	\$19,949,999
2 CANCER IMMUNOLOGY CENTER	950,000	950,000	2,500,000	2,500,000	3,450,000	3,450,000
3 SCHOOL OF PODIATRIC MEDICINE	6,000,000	6,000,000	0	0	6,000,000	6,000,000
<i>2 Exceptional Item Request</i>						
1 EXCEPTIONAL ITEM REQUEST	0	0	2,500,000	2,500,000	2,500,000	2,500,000
<b>TOTAL, GOAL 4</b>	<b>\$26,900,000</b>	<b>\$26,899,999</b>	<b>\$5,000,000</b>	<b>\$5,000,000</b>	<b>\$31,900,000</b>	<b>\$31,899,999</b>
<b>5 Tobacco Funds</b>						
<i>1 Tobacco Earnings for Research</i>						
1 TOBACCO-PERMANENT HEALTH FUND	1,303,026	1,303,026	0	0	1,303,026	1,303,026
<b>TOTAL, GOAL 5</b>	<b>\$1,303,026</b>	<b>\$1,303,026</b>	<b>\$0</b>	<b>\$0</b>	<b>\$1,303,026</b>	<b>\$1,303,026</b>
<b>TOTAL, AGENCY STRATEGY REQUEST</b>	<b>\$28,632,437</b>	<b>\$28,632,436</b>	<b>\$7,005,000</b>	<b>\$7,005,000</b>	<b>\$35,637,437</b>	<b>\$35,637,436</b>
<b>TOTAL, AGENCY RIDER APPROPRIATIONS REQUEST</b>						
<b>GRAND TOTAL, AGENCY REQUEST</b>	<b>\$28,632,437</b>	<b>\$28,632,436</b>	<b>\$7,005,000</b>	<b>\$7,005,000</b>	<b>\$35,637,437</b>	<b>\$35,637,436</b>

**2.F. Summary of Total Request by Strategy**  
 89th Regular Session, Agency Submission, Version 1  
 Automated Budget and Evaluation System of Texas (ABEST)

DATE : 8/14/2024  
 TIME : 5:12:59PM

Agency code: 748 Agency name: The University of Texas Rio Grande Valley School of Medicine

<b>Goal/Objective/STRATEGY</b>	<b>Base 2026</b>	<b>Base 2027</b>	<b>Exceptional 2026</b>	<b>Exceptional 2027</b>	<b>Total Request 2026</b>	<b>Total Request 2027</b>
<b>General Revenue Funds:</b>						
1 General Revenue Fund	\$26,900,000	\$26,899,999	\$7,005,000	\$7,005,000	\$33,905,000	\$33,904,999
	<b>\$26,900,000</b>	<b>\$26,899,999</b>	<b>\$7,005,000</b>	<b>\$7,005,000</b>	<b>\$33,905,000</b>	<b>\$33,904,999</b>
<b>General Revenue Dedicated Funds:</b>						
770 Est. Other Educational & General	429,411	429,411	0	0	429,411	429,411
	<b>\$429,411</b>	<b>\$429,411</b>	<b>\$0</b>	<b>\$0</b>	<b>\$429,411</b>	<b>\$429,411</b>
<b>Other Funds:</b>						
810 Perm Health Fund Higher Ed, est	1,303,026	1,303,026	0	0	1,303,026	1,303,026
	<b>\$1,303,026</b>	<b>\$1,303,026</b>	<b>\$0</b>	<b>\$0</b>	<b>\$1,303,026</b>	<b>\$1,303,026</b>
<b>TOTAL, METHOD OF FINANCING</b>	<b>\$28,632,437</b>	<b>\$28,632,436</b>	<b>\$7,005,000</b>	<b>\$7,005,000</b>	<b>\$35,637,437</b>	<b>\$35,637,436</b>
<b>FULL TIME EQUIVALENT POSITIONS</b>	<b>545.2</b>	<b>545.2</b>	<b>42.1</b>	<b>42.1</b>	<b>587.3</b>	<b>587.3</b>

**2.G. Summary of Total Request Objective Outcomes**  
 89th Regular Session, Agency Submission, Version 1  
 Automated Budget and Evaluation system of Texas (ABEST)

Date : 8/14/2024  
 Time: 5:13:00PM

Agency code: 748 Agency name: The University of Texas Rio Grande Valley School of Medicine

Goal/ Objective / Outcome

	BL 2026	BL 2027	Excp 2026	Excp 2027	Total Request 2026	Total Request 2027
1 Provide Instructional and Operations Support						
1 <i>Instructional Programs</i>						
<b>KEY 1 % Medical School Students Passing NLE Part 1 or Part 2 on First Try</b>	90.00%	90.00%			90.00%	90.00%
<b>2 % Medical School Graduates Practicing Primary Care in Texas</b>	0.00%	0.00%			0.00%	0.00%
<b>3 % Med School Grads Practicing Primary Care in Texas Underserved Area</b>	0.00%	0.00%			0.00%	0.00%
<b>KEY 4 Percent of Medical Residency Completers Practicing in Texas</b>	55.00%	55.00%			55.00%	55.00%
<b>5 Total Uncompensated Care Provided by Faculty</b>	26,000,000.00	27,000,000.00			26,000,000.00	27,000,000.00
<b>12 % Medical School Graduates Practicing in Texas</b>	0.00%	0.00%			0.00%	0.00%
2 Provide Research Support						
1 <i>Research Activities</i>						
<b>KEY 1 Total External Research Expenditures</b>	16,000,000.00	17,000,000.00			16,000,000.00	17,000,000.00

**2.G. Summary of Total Request Objective Outcomes**  
 89th Regular Session, Agency Submission, Version 1  
 Automated Budget and Evaluation system of Texas (ABEST)

Date : 8/14/2024  
 Time: 5:13:00PM

Agency code: 748

Agency name: The University of Texas Rio Grande Valley School of Medicine

Goal/ Objective / Outcome

	<b>BL 2026</b>	<b>BL 2027</b>	<b>Excp 2026</b>	<b>Excp 2027</b>	<b>Total Request 2026</b>	<b>Total Request 2027</b>
<b>2 External Research Expends As % of State Appropriations for Research</b>						
	964.00%	1,024.00%			964.00%	1,024.00%

**748 The University of Texas Rio Grande Valley School of Medicine**

GOAL: 1 Provide Instructional and Operations Support  
 OBJECTIVE: 1 Instructional Programs  
 STRATEGY: 1 Medical Education

Service Categories:

Service: 19      Income: A.2      Age: B.3

CODE	DESCRIPTION	Exp 2023	Est 2024	Bud 2025	BL 2026 <sup>(1)</sup>	BL 2027 <sup>(1)</sup>
<b>Output Measures:</b>						
	1 Minority Graduates As a Percentage of Total Graduates (All Schools)	51.00 %	64.00 %	57.00 %	59.00 %	61.00 %
	2 Minority Graduates As a Percent of Total MD/DO Graduates	51.00 %	64.00 %	57.00 %	59.00 %	61.00 %
	3 Total Number of Postdoctoral Research Trainees (All Schools)	9.00	12.00	19.00	21.00	23.00
<b>Explanatory/Input Measures:</b>						
KEY 1	Minority Admissions As % of Total First-year Admissions (All Schools)	58.00 %	70.00 %	65.00 %	65.00 %	65.00 %
KEY 2	Minority MD Admissions As % of Total MD Admissions	64.00 %	0.00 %	0.00 %	0.00 %	0.00 %
KEY 3	% Medical School Graduates Entering a Primary Care Residency	47.00 %	48.00 %	48.00 %	48.00 %	48.00 %
KEY 4	Average Student Loan Debt for Medical School Graduates	139,140.00	133,490.00	134,000.00	134,000.00	134,000.00
KEY 5	Percent of Medical School Graduates with Student Loan Debt	73.30 %	73.10 %	73.00 %	73.00 %	73.00 %
<b>Objects of Expense:</b>						
1001	SALARIES AND WAGES	\$6,925,170	\$8,754,580	\$9,164,557	\$0	\$0
1002	OTHER PERSONNEL COSTS	\$57,952	\$154,578	\$173,010	\$0	\$0

(1) - Formula funded strategies are not requested in 2026-27 because amounts are not determined by institutions.

**748 The University of Texas Rio Grande Valley School of Medicine**

GOAL: 1 Provide Instructional and Operations Support  
 OBJECTIVE: 1 Instructional Programs  
 STRATEGY: 1 Medical Education

Service Categories:

Service: 19      Income: A.2      Age: B.3

CODE	DESCRIPTION	Exp 2023	Est 2024	Bud 2025	BL 2026 <sup>(1)</sup>	BL 2027 <sup>(1)</sup>
1005	FACULTY SALARIES	\$2,634,447	\$0	\$0	\$0	\$0
2009	OTHER OPERATING EXPENSE	\$280	\$16,329	\$305,010	\$0	\$0
<b>TOTAL, OBJECT OF EXPENSE</b>		<b>\$9,617,849</b>	<b>\$8,925,487</b>	<b>\$9,642,577</b>	<b>\$0</b>	<b>\$0</b>
<b>Method of Financing:</b>						
1	General Revenue Fund	\$9,132,348	\$8,328,080	\$8,247,541	\$0	\$0
<b>SUBTOTAL, MOF (GENERAL REVENUE FUNDS)</b>		<b>\$9,132,348</b>	<b>\$8,328,080</b>	<b>\$8,247,541</b>	<b>\$0</b>	<b>\$0</b>
<b>Method of Financing:</b>						
770	Est. Other Educational & General	\$485,501	\$597,407	\$1,395,036	\$0	\$0
<b>SUBTOTAL, MOF (GENERAL REVENUE FUNDS - DEDICATED)</b>		<b>\$485,501</b>	<b>\$597,407</b>	<b>\$1,395,036</b>	<b>\$0</b>	<b>\$0</b>
<b>TOTAL, METHOD OF FINANCE (INCLUDING RIDERS)</b>					<b>\$0</b>	<b>\$0</b>
<b>TOTAL, METHOD OF FINANCE (EXCLUDING RIDERS)</b>		<b>\$9,617,849</b>	<b>\$8,925,487</b>	<b>\$9,642,577</b>	<b>\$0</b>	<b>\$0</b>
<b>FULL TIME EQUIVALENT POSITIONS:</b>		<b>236.6</b>	<b>169.9</b>	<b>193.4</b>	<b>193.4</b>	<b>193.4</b>

**STRATEGY DESCRIPTION AND JUSTIFICATION:**

(1) - Formula funded strategies are not requested in 2026-27 because amounts are not determined by institutions.

**748 The University of Texas Rio Grande Valley School of Medicine**

GOAL: 1 Provide Instructional and Operations Support  
 OBJECTIVE: 1 Instructional Programs  
 STRATEGY: 1 Medical Education

Service Categories:

Service: 19      Income: A.2      Age: B.3

CODE	DESCRIPTION	Exp 2023	Est 2024	Bud 2025	BL 2026 <sup>(1)</sup>	BL 2027 <sup>(1)</sup>
------	-------------	----------	----------	----------	------------------------	------------------------

The Instruction and Operations Formula provides funding for faculty salaries, departmental operating expense, library, instructional administration, student services and institutional support. The formula for this strategy is based on weighted medical student headcounts. The rate per weighted student headcount or full time equivalent is established by the Legislature each biennium.

**EXTERNAL/INTERNAL FACTORS IMPACTING STRATEGY:**

**EXPLANATION OF BIENNIAL CHANGE (includes Rider amounts):**

<u>STRATEGY BIENNIAL TOTAL - ALL FUNDS</u>		<u>BIENNIAL</u>	<u>EXPLANATION OF BIENNIAL CHANGE</u>	
<u>Base Spending (Est 2024 + Bud 2025)</u>	<u>Baseline Request (BL 2026 + BL 2027)</u>	<u>CHANGE</u>	<u>\$ Amount</u>	<u>Explanation(s) of Amount (must specify MOFs and FTEs)</u>
\$18,568,064	\$0	\$(18,568,064)	\$(18,568,064)	Formula funded strategies are not requested in 2026-27 because amounts are not determined by institutions.
			<b>\$(18,568,064)</b>	<b>Total of Explanation of Biennial Change</b>

(1) - Formula funded strategies are not requested in 2026-27 because amounts are not determined by institutions.



**748 The University of Texas Rio Grande Valley School of Medicine**

GOAL: 1 Provide Instructional and Operations Support  
 OBJECTIVE: 1 Instructional Programs  
 STRATEGY: 2 Podiatric Education

Service Categories:

Service: 19      Income: A.2      Age: B.3

CODE	DESCRIPTION	Exp 2023	Est 2024	Bud 2025	BL 2026	BL 2027
<b>Explanatory/Input Measures:</b>						
KEY 1	Minority DPM Admissions As % of Ttl Doc of Podiatric Med Admissions	52.00 %	56.00 %	55.00 %	55.00 %	55.00 %
<b>Objects of Expense:</b>						
1001	SALARIES AND WAGES	\$0	\$157,560	\$289,838	\$0	\$0
1002	OTHER PERSONNEL COSTS	\$0	\$0	\$2,020	\$0	\$0
2005	TRAVEL	\$0	\$40,000	\$0	\$0	\$0
2009	OTHER OPERATING EXPENSE	\$0	\$1,241,164	\$951,479	\$0	\$0
<b>TOTAL, OBJECT OF EXPENSE</b>		<b>\$0</b>	<b>\$1,438,724</b>	<b>\$1,243,337</b>	<b>\$0</b>	<b>\$0</b>
<b>Method of Financing:</b>						
1	General Revenue Fund	\$0	\$1,438,724	\$1,243,337	\$0	\$0
<b>SUBTOTAL, MOF (GENERAL REVENUE FUNDS)</b>		<b>\$0</b>	<b>\$1,438,724</b>	<b>\$1,243,337</b>	<b>\$0</b>	<b>\$0</b>
<b>TOTAL, METHOD OF FINANCE (INCLUDING RIDERS)</b>					<b>\$0</b>	<b>\$0</b>
<b>TOTAL, METHOD OF FINANCE (EXCLUDING RIDERS)</b>		<b>\$0</b>	<b>\$1,438,724</b>	<b>\$1,243,337</b>	<b>\$0</b>	<b>\$0</b>
<b>FULL TIME EQUIVALENT POSITIONS:</b>		<b>0.0</b>	<b>2.0</b>	<b>2.0</b>	<b>2.0</b>	<b>2.0</b>

**748 The University of Texas Rio Grande Valley School of Medicine**

GOAL: 1 Provide Instructional and Operations Support  
 OBJECTIVE: 1 Instructional Programs  
 STRATEGY: 2 Podiatric Education

Service Categories:

Service: 19      Income: A.2      Age: B.3

CODE	DESCRIPTION	Exp 2023	Est 2024	Bud 2025	BL 2026	BL 2027
------	-------------	----------	----------	----------	---------	---------

**STRATEGY DESCRIPTION AND JUSTIFICATION:**

The Instruction and Operations Formula provides funding for faculty salaries, departmental operating expense, library, instructional administration, student services and institutional support. The formula for this strategy is based on weighted medical student headcounts. The rate per weighted student headcount or full time equivalent is established by the Legislature each biennium.

**EXTERNAL/INTERNAL FACTORS IMPACTING STRATEGY:**

**EXPLANATION OF BIENNIAL CHANGE (includes Rider amounts):**

<u>STRATEGY BIENNIAL TOTAL - ALL FUNDS</u>		<u>BIENNIAL</u>	<u>EXPLANATION OF BIENNIAL CHANGE</u>	
<u>Base Spending (Est 2024 + Bud 2025)</u>	<u>Baseline Request (BL 2026 + BL 2027)</u>	<u>CHANGE</u>	<u>\$ Amount</u>	<u>Explanation(s) of Amount (must specify MOFs and FTEs)</u>
\$2,682,061	\$0	\$(2,682,061)	\$(2,682,061)	Formula funded strategies are not requested in 2026-27 because amounts are not determined by institutions.
			<b>\$(2,682,061)</b>	<b>Total of Explanation of Biennial Change</b>

**748 The University of Texas Rio Grande Valley School of Medicine**

GOAL: 1 Provide Instructional and Operations Support  
 OBJECTIVE: 1 Instructional Programs  
 STRATEGY: 3 Graduate Medical Education

Service Categories:

Service: 19      Income: A.2      Age: B.3

CODE	DESCRIPTION	Exp 2023	Est 2024	Bud 2025	BL 2026 <sup>(1)</sup>	BL 2027 <sup>(1)</sup>
<b>Output Measures:</b>						
KEY 1	Total Number of MD or DO or DPM Residents	150.00	150.00	136.00	154.00	171.00
<b>Explanatory/Input Measures:</b>						
KEY 1	Minority MD or DO Residents As a Percent of Total MD or DO Residents	64.00 %	0.00 %	0.00 %	0.00 %	0.00 %
<b>Objects of Expense:</b>						
1001	SALARIES AND WAGES	\$1,000,079	\$1,228,518	\$1,718,870	\$0	\$0
1002	OTHER PERSONNEL COSTS	\$10,320	\$3,020	\$8,280	\$0	\$0
1005	FACULTY SALARIES	\$278,162	\$302,000	\$387,366	\$0	\$0
2009	OTHER OPERATING EXPENSE	\$932	\$720	\$432	\$0	\$0
<b>TOTAL, OBJECT OF EXPENSE</b>		<b>\$1,289,493</b>	<b>\$1,534,258</b>	<b>\$2,114,948</b>	<b>\$0</b>	<b>\$0</b>
<b>Method of Financing:</b>						
1	General Revenue Fund	\$1,289,493	\$1,534,258	\$2,114,948	\$0	\$0
<b>SUBTOTAL, MOF (GENERAL REVENUE FUNDS)</b>		<b>\$1,289,493</b>	<b>\$1,534,258</b>	<b>\$2,114,948</b>	<b>\$0</b>	<b>\$0</b>

(1) - Formula funded strategies are not requested in 2026-27 because amounts are not determined by institutions.

**748 The University of Texas Rio Grande Valley School of Medicine**

GOAL: 1 Provide Instructional and Operations Support  
 OBJECTIVE: 1 Instructional Programs  
 STRATEGY: 3 Graduate Medical Education

Service Categories:  
 Service: 19 Income: A.2 Age: B.3

CODE	DESCRIPTION	Exp 2023	Est 2024	Bud 2025	BL 2026 <sup>(1)</sup>	BL 2027 <sup>(1)</sup>
<b>TOTAL, METHOD OF FINANCE (INCLUDING RIDERS)</b>					<b>\$0</b>	<b>\$0</b>
<b>TOTAL, METHOD OF FINANCE (EXCLUDING RIDERS)</b>		<b>\$1,289,493</b>	<b>\$1,534,258</b>	<b>\$2,114,948</b>	<b>\$0</b>	<b>\$0</b>
<b>FULL TIME EQUIVALENT POSITIONS:</b>		<b>15.3</b>	<b>19.2</b>	<b>28.4</b>	<b>28.4</b>	<b>28.4</b>

**STRATEGY DESCRIPTION AND JUSTIFICATION:**

The Graduate Medical Education formula allocates funding based on the number of medical residents. These funds shall be used to increase the number of resident slots in the State of Texas as well as for faculty costs related to GME.

**EXTERNAL/INTERNAL FACTORS IMPACTING STRATEGY:**

**EXPLANATION OF BIENNIAL CHANGE (includes Rider amounts):**

<u>STRATEGY BIENNIAL TOTAL - ALL FUNDS</u>		<u>BIENNIAL CHANGE</u>	<u>EXPLANATION OF BIENNIAL CHANGE</u>	
Base Spending (Est 2024 + Bud 2025)	Baseline Request (BL 2026 + BL 2027)	\$ Amount	\$ Amount	Explanation(s) of Amount (must specify MOFs and FTEs)
\$3,649,206	\$0	\$(3,649,206)	\$(3,649,206)	Formula funded strategies are not requested in 2026-27 because amounts are not determined by institutions.
		<b>\$(3,649,206)</b>		<b>Total of Explanation of Biennial Change</b>

(1) - Formula funded strategies are not requested in 2026-27 because amounts are not determined by institutions.

**748 The University of Texas Rio Grande Valley School of Medicine**

GOAL: 1 Provide Instructional and Operations Support  
 OBJECTIVE: 2 Operations - Staff Benefits  
 STRATEGY: 1 Staff Group Insurance Premiums

Service Categories:

Service: 19      Income: A.2      Age: B.3

CODE	DESCRIPTION	Exp 2023	Est 2024	Bud 2025	BL 2026	BL 2027
<b>Objects of Expense:</b>						
2009	OTHER OPERATING EXPENSE	\$739,971	\$854,526	\$138,000	\$138,000	\$138,000
<b>TOTAL, OBJECT OF EXPENSE</b>		<b>\$739,971</b>	<b>\$854,526</b>	<b>\$138,000</b>	<b>\$138,000</b>	<b>\$138,000</b>
<b>Method of Financing:</b>						
770	Est. Other Educational & General	\$739,971	\$854,526	\$138,000	\$138,000	\$138,000
<b>SUBTOTAL, MOF (GENERAL REVENUE FUNDS - DEDICATED)</b>		<b>\$739,971</b>	<b>\$854,526</b>	<b>\$138,000</b>	<b>\$138,000</b>	<b>\$138,000</b>
<b>TOTAL, METHOD OF FINANCE (INCLUDING RIDERS)</b>					<b>\$138,000</b>	<b>\$138,000</b>
<b>TOTAL, METHOD OF FINANCE (EXCLUDING RIDERS)</b>		<b>\$739,971</b>	<b>\$854,526</b>	<b>\$138,000</b>	<b>\$138,000</b>	<b>\$138,000</b>

**FULL TIME EQUIVALENT POSITIONS:**

**STRATEGY DESCRIPTION AND JUSTIFICATION:**

This strategy is to provide proportional share of staff group insurance premiums paid from Other Educational and General funds.

**EXTERNAL/INTERNAL FACTORS IMPACTING STRATEGY:**

**748 The University of Texas Rio Grande Valley School of Medicine**

GOAL: 1 Provide Instructional and Operations Support

OBJECTIVE: 2 Operations - Staff Benefits

Service Categories:

STRATEGY: 1 Staff Group Insurance Premiums

Service: 19

Income: A.2

Age: B.3

CODE	DESCRIPTION	Exp 2023	Est 2024	Bud 2025	BL 2026	BL 2027
------	-------------	----------	----------	----------	---------	---------

**EXPLANATION OF BIENNIAL CHANGE (includes Rider amounts):**

<u>STRATEGY BIENNIAL TOTAL - ALL FUNDS</u>		BIENNIAL	<u>EXPLANATION OF BIENNIAL CHANGE</u>	
Base Spending (Est 2024 + Bud 2025)	Baseline Request (BL 2026 + BL 2027)	CHANGE	\$ Amount	Explanation(s) of Amount (must specify MOFs and FTEs)
\$992,526	\$276,000	\$(716,526)	\$(716,526)	Due to change in Proportional spending and not using GRD to cover shortfall funding of GR.
			<b>\$(716,526)</b>	<b>Total of Explanation of Biennial Change</b>

**748 The University of Texas Rio Grande Valley School of Medicine**

GOAL: 1 Provide Instructional and Operations Support  
 OBJECTIVE: 3 Operations - Statutory Funds  
 STRATEGY: 1 Texas Public Education Grants

Service Categories:

Service: 19      Income: A.2      Age: B.3

CODE	DESCRIPTION	Exp 2023	Est 2024	Bud 2025	BL 2026	BL 2027
<b>Objects of Expense:</b>						
2009	OTHER OPERATING EXPENSE	\$188,371	\$280,997	\$291,411	\$291,411	\$291,411
<b>TOTAL, OBJECT OF EXPENSE</b>		<b>\$188,371</b>	<b>\$280,997</b>	<b>\$291,411</b>	<b>\$291,411</b>	<b>\$291,411</b>
<b>Method of Financing:</b>						
770	Est. Other Educational & General	\$188,371	\$280,997	\$291,411	\$291,411	\$291,411
<b>SUBTOTAL, MOF (GENERAL REVENUE FUNDS - DEDICATED)</b>		<b>\$188,371</b>	<b>\$280,997</b>	<b>\$291,411</b>	<b>\$291,411</b>	<b>\$291,411</b>
<b>TOTAL, METHOD OF FINANCE (INCLUDING RIDERS)</b>					<b>\$291,411</b>	<b>\$291,411</b>
<b>TOTAL, METHOD OF FINANCE (EXCLUDING RIDERS)</b>		<b>\$188,371</b>	<b>\$280,997</b>	<b>\$291,411</b>	<b>\$291,411</b>	<b>\$291,411</b>

**FULL TIME EQUIVALENT POSITIONS:**

**STRATEGY DESCRIPTION AND JUSTIFICATION:**

This strategy represents tuition set aside for the Texas Public Education Grants program as required by Section 56.033 of the Texas Education Code.

**EXTERNAL/INTERNAL FACTORS IMPACTING STRATEGY:**

**748 The University of Texas Rio Grande Valley School of Medicine**

GOAL: 1 Provide Instructional and Operations Support

OBJECTIVE: 3 Operations - Statutory Funds

Service Categories:

STRATEGY: 1 Texas Public Education Grants

Service: 19

Income: A.2

Age: B.3

CODE	DESCRIPTION	Exp 2023	Est 2024	Bud 2025	BL 2026	BL 2027
------	-------------	----------	----------	----------	---------	---------

**EXPLANATION OF BIENNIAL CHANGE (includes Rider amounts):**

<u>STRATEGY BIENNIAL TOTAL - ALL FUNDS</u>		BIENNIAL	<u>EXPLANATION OF BIENNIAL CHANGE</u>	
Base Spending (Est 2024 + Bud 2025)	Baseline Request (BL 2026 + BL 2027)	CHANGE	\$ Amount	Explanation(s) of Amount (must specify MOFs and FTEs)
\$572,408	\$582,822	\$10,414	\$10,414	Due to increase in enrollment and adding of Podiatric Medicine.
			<b>\$10,414</b>	<b>Total of Explanation of Biennial Change</b>



**748 The University of Texas Rio Grande Valley School of Medicine**

GOAL: 2 Provide Research Support  
 OBJECTIVE: 1 Research Activities  
 STRATEGY: 1 Research Enhancement

Service Categories:

Service: 21      Income: A.2      Age: B.3

CODE	DESCRIPTION	Exp 2023	Est 2024	Bud 2025	BL 2026	BL 2027
<b>Objects of Expense:</b>						
1001	SALARIES AND WAGES	\$916,604	\$693,096	\$532,036	\$0	\$0
1002	OTHER PERSONNEL COSTS	\$11,713	\$15,808	\$20,527	\$0	\$0
1005	FACULTY SALARIES	\$748,022	\$948,953	\$946,734	\$0	\$0
2009	OTHER OPERATING EXPENSE	\$0	\$0	\$158,560	\$0	\$0
<b>TOTAL, OBJECT OF EXPENSE</b>		<b>\$1,676,339</b>	<b>\$1,657,857</b>	<b>\$1,657,857</b>	<b>\$0</b>	<b>\$0</b>
<b>Method of Financing:</b>						
1	General Revenue Fund	\$1,676,339	\$1,657,857	\$1,657,857	\$0	\$0
<b>SUBTOTAL, MOF (GENERAL REVENUE FUNDS)</b>		<b>\$1,676,339</b>	<b>\$1,657,857</b>	<b>\$1,657,857</b>	<b>\$0</b>	<b>\$0</b>
<b>TOTAL, METHOD OF FINANCE (INCLUDING RIDERS)</b>					<b>\$0</b>	<b>\$0</b>
<b>TOTAL, METHOD OF FINANCE (EXCLUDING RIDERS)</b>		<b>\$1,676,339</b>	<b>\$1,657,857</b>	<b>\$1,657,857</b>	<b>\$0</b>	<b>\$0</b>
<b>FULL TIME EQUIVALENT POSITIONS:</b>		<b>19.7</b>	<b>21.6</b>	<b>30.4</b>	<b>30.4</b>	<b>30.4</b>

**STRATEGY DESCRIPTION AND JUSTIFICATION:**

The Research Enhancement formula allocates a fixed amount per year to each institution in addition to a legislatively determined percentage of the research expenditures as reported to the Texas Higher Education Coordinating Board. These funds are used to support the research activities of the institution.

**748 The University of Texas Rio Grande Valley School of Medicine**

GOAL: 2 Provide Research Support  
 OBJECTIVE: 1 Research Activities  
 STRATEGY: 1 Research Enhancement

Service Categories:

Service: 21      Income: A.2      Age: B.3

CODE	DESCRIPTION	Exp 2023	Est 2024	Bud 2025	BL 2026	BL 2027
------	-------------	----------	----------	----------	---------	---------

**EXTERNAL/INTERNAL FACTORS IMPACTING STRATEGY:**

**EXPLANATION OF BIENNIAL CHANGE (includes Rider amounts):**

<u>STRATEGY BIENNIAL TOTAL - ALL FUNDS</u>		<u>BIENNIAL</u>	<u>EXPLANATION OF BIENNIAL CHANGE</u>	
<u>Base Spending (Est 2024 + Bud 2025)</u>	<u>Baseline Request (BL 2026 + BL 2027)</u>	<u>CHANGE</u>	<u>\$ Amount</u>	<u>Explanation(s) of Amount (must specify MOFs and FTEs)</u>
\$3,315,714	\$0	\$(3,315,714)	\$(3,315,714)	Formula funded strategies are not requested in 2026-27 because amounts are not determined by institutions.
			<u>\$(3,315,714)</u>	<b>Total of Explanation of Biennial Change</b>

**748 The University of Texas Rio Grande Valley School of Medicine**

GOAL: 3 Provide Infrastructure Support  
 OBJECTIVE: 1 Operations and Maintenance  
 STRATEGY: 1 E&G Space Support

Service Categories:

Service: 10      Income: A.2      Age: B.3

CODE	DESCRIPTION	Exp 2023	Est 2024	Bud 2025	BL 2026 <sup>(1)</sup>	BL 2027 <sup>(1)</sup>
<b>Objects of Expense:</b>						
1001	SALARIES AND WAGES	\$1,585,188	\$1,703,817	\$1,705,157	\$0	\$0
1002	OTHER PERSONNEL COSTS	\$19,624	\$30,350	\$29,010	\$0	\$0
2009	OTHER OPERATING EXPENSE	\$798	\$0	\$0	\$0	\$0
<b>TOTAL, OBJECT OF EXPENSE</b>		<b>\$1,605,610</b>	<b>\$1,734,167</b>	<b>\$1,734,167</b>	<b>\$0</b>	<b>\$0</b>
<b>Method of Financing:</b>						
1	General Revenue Fund	\$1,605,610	\$1,734,167	\$1,734,167	\$0	\$0
<b>SUBTOTAL, MOF (GENERAL REVENUE FUNDS)</b>		<b>\$1,605,610</b>	<b>\$1,734,167</b>	<b>\$1,734,167</b>	<b>\$0</b>	<b>\$0</b>
<b>TOTAL, METHOD OF FINANCE (INCLUDING RIDERS)</b>					<b>\$0</b>	<b>\$0</b>
<b>TOTAL, METHOD OF FINANCE (EXCLUDING RIDERS)</b>		<b>\$1,605,610</b>	<b>\$1,734,167</b>	<b>\$1,734,167</b>	<b>\$0</b>	<b>\$0</b>
<b>FULL TIME EQUIVALENT POSITIONS:</b>		<b>39.3</b>	<b>29.7</b>	<b>31.7</b>	<b>31.7</b>	<b>31.7</b>

**STRATEGY DESCRIPTION AND JUSTIFICATION:**

The Infrastructure Support formula distributes funding associated with plant support and utilities. This formula is driven by the predicted square feet for health related institutions produced by the Coordinating Board Space Projection Model.

(1) - Formula funded strategies are not requested in 2026-27 because amounts are not determined by institutions.

**748 The University of Texas Rio Grande Valley School of Medicine**

GOAL: 3 Provide Infrastructure Support  
 OBJECTIVE: 1 Operations and Maintenance  
 STRATEGY: 1 E&G Space Support

Service Categories:

Service: 10      Income: A.2      Age: B.3

CODE	DESCRIPTION	Exp 2023	Est 2024	Bud 2025	BL 2026 <sup>(1)</sup>	BL 2027 <sup>(1)</sup>
------	-------------	----------	----------	----------	------------------------	------------------------

**EXTERNAL/INTERNAL FACTORS IMPACTING STRATEGY:**

**EXPLANATION OF BIENNIAL CHANGE (includes Rider amounts):**

<u>STRATEGY BIENNIAL TOTAL - ALL FUNDS</u>		<u>BIENNIAL</u>	<u>EXPLANATION OF BIENNIAL CHANGE</u>	
<u>Base Spending (Est 2024 + Bud 2025)</u>	<u>Baseline Request (BL 2026 + BL 2027)</u>	<u>CHANGE</u>	<u>\$ Amount</u>	<u>Explanation(s) of Amount (must specify MOFs and FTEs)</u>
\$3,468,334	\$0	\$(3,468,334)	\$(3,468,334)	Formula funded strategies are not requested in 2026-27 because amounts are not determined by institutions.
			<b>\$(3,468,334)</b>	<b>Total of Explanation of Biennial Change</b>

(1) - Formula funded strategies are not requested in 2026-27 because amounts are not determined by institutions.

**748 The University of Texas Rio Grande Valley School of Medicine**

GOAL: 3 Provide Infrastructure Support  
 OBJECTIVE: 2 Infrastructure Support Service Categories:  
 STRATEGY: 1 Capital Construction Assistance Projects Revenue Bonds Service: 10 Income: A.2 Age: B.3

CODE	DESCRIPTION	Exp 2023	Est 2024	Bud 2025	BL 2026	BL 2027
<b>Objects of Expense:</b>						
2008	DEBT SERVICE	\$0	\$0	\$0	\$0	\$0
<b>TOTAL, OBJECT OF EXPENSE</b>		<b>\$0</b>	<b>\$0</b>	<b>\$0</b>	<b>\$0</b>	<b>\$0</b>
<b>Method of Financing:</b>						
1	General Revenue Fund	\$0	\$0	\$0	\$0	\$0
<b>SUBTOTAL, MOF (GENERAL REVENUE FUNDS)</b>		<b>\$0</b>	<b>\$0</b>	<b>\$0</b>	<b>\$0</b>	<b>\$0</b>
<b>TOTAL, METHOD OF FINANCE (INCLUDING RIDERS)</b>					<b>\$0</b>	<b>\$0</b>
<b>TOTAL, METHOD OF FINANCE (EXCLUDING RIDERS)</b>		<b>\$0</b>	<b>\$0</b>	<b>\$0</b>	<b>\$0</b>	<b>\$0</b>

**FULL TIME EQUIVALENT POSITIONS:**

**STRATEGY DESCRIPTION AND JUSTIFICATION:**

The Capital Construction Assistance Projects Revenue Bond strategy provides for bond indebtedness payments of General Capital Construction Assistance Projects Revenue Bonds. Bond indebtedness payments of General Capital Construction Assistance Projects Revenue Bonds are authorized under Texas Education Code Section 55.17.

Appropriations for debt service assist the University in minimizing tuition and fee increases that would otherwise be needed to fund these types of construction projects

**748 The University of Texas Rio Grande Valley School of Medicine**

GOAL: 3 Provide Infrastructure Support  
 OBJECTIVE: 2 Infrastructure Support  
 STRATEGY: 1 Capital Construction Assistance Projects Revenue Bonds

Service Categories:  
 Service: 10      Income: A.2      Age: B.3

CODE	DESCRIPTION	Exp 2023	Est 2024	Bud 2025	BL 2026	BL 2027
------	-------------	----------	----------	----------	---------	---------

**EXTERNAL/INTERNAL FACTORS IMPACTING STRATEGY:**

**EXPLANATION OF BIENNIAL CHANGE (includes Rider amounts):**

<u>STRATEGY BIENNIAL TOTAL - ALL FUNDS</u>		<u>BIENNIAL CHANGE</u>	<u>EXPLANATION OF BIENNIAL CHANGE</u>	
<u>Base Spending (Est 2024 + Bud 2025)</u>	<u>Baseline Request (BL 2026 + BL 2027)</u>		<u>\$ Amount</u>	<u>Explanation(s) of Amount (must specify MOFs and FTEs)</u>
\$0	\$0	\$0	\$0	no change
			<u>\$0</u>	<b>Total of Explanation of Biennial Change</b>

**748 The University of Texas Rio Grande Valley School of Medicine**

GOAL: 4 Provide Non-Formula Support  
 OBJECTIVE: 1 Instruction/Operation  
 STRATEGY: 1 School of Medicine

Service Categories:

Service: 19      Income: A.2      Age: B.3

CODE	DESCRIPTION	Exp 2023	Est 2024	Bud 2025	BL 2026	BL 2027
<b>Objects of Expense:</b>						
1001	SALARIES AND WAGES	\$9,805,044	\$7,743,316	\$10,652,083	\$10,652,084	\$10,652,083
1002	OTHER PERSONNEL COSTS	\$78,027	\$0	\$0	\$0	\$0
1005	FACULTY SALARIES	\$10,065,562	\$12,206,684	\$9,297,916	\$9,297,916	\$9,297,916
2009	OTHER OPERATING EXPENSE	\$1,367	\$0	\$0	\$0	\$0
<b>TOTAL, OBJECT OF EXPENSE</b>		<b>\$19,950,000</b>	<b>\$19,950,000</b>	<b>\$19,949,999</b>	<b>\$19,950,000</b>	<b>\$19,949,999</b>
<b>Method of Financing:</b>						
1	General Revenue Fund	\$19,950,000	\$19,950,000	\$19,949,999	\$19,950,000	\$19,949,999
<b>SUBTOTAL, MOF (GENERAL REVENUE FUNDS)</b>		<b>\$19,950,000</b>	<b>\$19,950,000</b>	<b>\$19,949,999</b>	<b>\$19,950,000</b>	<b>\$19,949,999</b>
<b>TOTAL, METHOD OF FINANCE (INCLUDING RIDERS)</b>					<b>\$19,950,000</b>	<b>\$19,949,999</b>
<b>TOTAL, METHOD OF FINANCE (EXCLUDING RIDERS)</b>		<b>\$19,950,000</b>	<b>\$19,950,000</b>	<b>\$19,949,999</b>	<b>\$19,950,000</b>	<b>\$19,949,999</b>
<b>FULL TIME EQUIVALENT POSITIONS:</b>		<b>201.2</b>	<b>207.3</b>	<b>206.3</b>	<b>206.3</b>	<b>206.3</b>
<b>STRATEGY DESCRIPTION AND JUSTIFICATION:</b>						

**748 The University of Texas Rio Grande Valley School of Medicine**

GOAL: 4 Provide Non-Formula Support

OBJECTIVE: 1 Instruction/Operation

Service Categories:

STRATEGY: 1 School of Medicine

Service: 19

Income: A.2

Age: B.3

CODE	DESCRIPTION	Exp 2023	Est 2024	Bud 2025	BL 2026	BL 2027
------	-------------	----------	----------	----------	---------	---------

The UTRGV School of Medicine is committed to addressing the state’s physician shortage by training talented physician scientists with a mission to transform the health of the Rio Grande Valley and beyond by providing advanced academic medicine through five pillars:

- Innovative Education
- Life-Changing Research and Discoveries
- High Quality Patient-Centered Care
- Serving our Community
- Sustainability and a Culture of Entrepreneurship

The school offers an exceptionally innovative learning experience designed to instill students with the scientific, clinical and research expertise to become excellent physician leaders.

We also seek to attract the best talent for faculty and staff positions critical to our mission. Our medical school opened in the summer of 2016 and welcomed 55 students into its charter class. Since this time, 238 students have graduated, and 220 students are enrolled across the four years of the medical education program.

We continue to grow our clinical and research footprint for the benefit of the Rio Grande Valley. Our research teams are conducting investigations into diabetes, cancer, and neurological disorders with the goal of discovering new treatments for diseases that disproportionately impact the community.

Legislative funding at an appropriate level is essential to supporting our school’s mission, planned growth, and efforts to maintain full accreditation by the Liaison Committee of Medical Education (LCME) as we prepare to increase our enrollment.



**748 The University of Texas Rio Grande Valley School of Medicine**

GOAL: 4 Provide Non-Formula Support  
 OBJECTIVE: 1 Instruction/Operation  
 STRATEGY: 1 School of Medicine

Service Categories:

Service: 19      Income: A.2      Age: B.3

CODE	DESCRIPTION	Exp 2023	Est 2024	Bud 2025	BL 2026	BL 2027
------	-------------	----------	----------	----------	---------	---------

**EXTERNAL/INTERNAL FACTORS IMPACTING STRATEGY:**

Additional information for this strategy is available in Schedule 9, Non -Formula Support.

**EXPLANATION OF BIENNIAL CHANGE (includes Rider amounts):**

<u>STRATEGY BIENNIAL TOTAL - ALL FUNDS</u>		<u>BIENNIAL CHANGE</u>	<u>EXPLANATION OF BIENNIAL CHANGE</u>	
<u>Base Spending (Est 2024 + Bud 2025)</u>	<u>Baseline Request (BL 2026 + BL 2027)</u>		<u>\$ Amount</u>	<u>Explanation(s) of Amount (must specify MOFs and FTEs)</u>
\$39,899,999	\$39,899,999	\$0	<b>\$0</b>	<b>Total of Explanation of Biennial Change</b>

**748 The University of Texas Rio Grande Valley School of Medicine**

GOAL: 4 Provide Non-Formula Support  
 OBJECTIVE: 1 Instruction/Operation Service Categories:  
 STRATEGY: 2 Cervical Dysplasia and Cancer Immunology Center Service: 19 Income: A.2 Age: B.3

CODE	DESCRIPTION	Exp 2023	Est 2024	Bud 2025	BL 2026	BL 2027
<b>Objects of Expense:</b>						
1001	SALARIES AND WAGES	\$172,205	\$285,397	\$122,025	\$116,459	\$116,459
1002	OTHER PERSONNEL COSTS	\$1,030	\$1,273	\$540	\$540	\$540
1005	FACULTY SALARIES	\$776,765	\$972,940	\$833,001	\$833,001	\$833,001
2009	OTHER OPERATING EXPENSE	\$0	\$720	\$0	\$0	\$0
<b>TOTAL, OBJECT OF EXPENSE</b>		<b>\$950,000</b>	<b>\$1,260,330</b>	<b>\$955,566</b>	<b>\$950,000</b>	<b>\$950,000</b>
<b>Method of Financing:</b>						
1	General Revenue Fund	\$950,000	\$1,260,330	\$955,566	\$950,000	\$950,000
<b>SUBTOTAL, MOF (GENERAL REVENUE FUNDS)</b>		<b>\$950,000</b>	<b>\$1,260,330</b>	<b>\$955,566</b>	<b>\$950,000</b>	<b>\$950,000</b>
<b>TOTAL, METHOD OF FINANCE (INCLUDING RIDERS)</b>					<b>\$950,000</b>	<b>\$950,000</b>
<b>TOTAL, METHOD OF FINANCE (EXCLUDING RIDERS)</b>		<b>\$950,000</b>	<b>\$1,260,330</b>	<b>\$955,566</b>	<b>\$950,000</b>	<b>\$950,000</b>
<b>FULL TIME EQUIVALENT POSITIONS:</b>		<b>10.2</b>	<b>14.4</b>	<b>9.0</b>	<b>9.0</b>	<b>9.0</b>
<b>STRATEGY DESCRIPTION AND JUSTIFICATION:</b>						

**748 The University of Texas Rio Grande Valley School of Medicine**

GOAL: 4 Provide Non-Formula Support  
 OBJECTIVE: 1 Instruction/Operation Service Categories:  
 STRATEGY: 2 Cervical Dysplasia and Cancer Immunology Center Service: 19 Income: A.2 Age: B.3

CODE	DESCRIPTION	Exp 2023	Est 2024	Bud 2025	BL 2026	BL 2027
------	-------------	----------	----------	----------	---------	---------

Funds will support the development of a nationally recognized center for cancer research and treatment (with focus in immunotherapy) that advances excellence in research, education and innovation in patient care for the benefit of the Rio Grande Valley (RGV) community.

Support allows the UTRGV School of Medicine (SoM) to build a critical mass of basic science and translational cancer researchers as well as cancer specialists in the South Texas region; the increased capacity will help keep the local Hispanic population in the region for cancer treatment, reversing a trend that has forced generations of Valley residents to travel hundreds of miles for treatment at great personal expense of time and money. The Center will improve the health of vulnerable, Hispanic populations in the region and beyond.

The funding will help fulfill the School of Medicine’s mission to transform the health of the Rio Grande Valley and beyond by providing advanced academic medicine through five pillars: Innovative education; Life-changing research and discoveries; High quality patient-centered care; Serving its community; and Sustainability and a culture of entrepreneurship.

**EXTERNAL/INTERNAL FACTORS IMPACTING STRATEGY:**

Additional information for this strategy is available in Schedule 9, Non-formula support information.

**EXPLANATION OF BIENNIAL CHANGE (includes Rider amounts):**

<u>STRATEGY BIENNIAL TOTAL - ALL FUNDS</u>		<u>BIENNIAL</u>	<u>EXPLANATION OF BIENNIAL CHANGE</u>	
<u>Base Spending (Est 2024 + Bud 2025)</u>	<u>Baseline Request (BL 2026 + BL 2027)</u>	<u>CHANGE</u>	<u>\$ Amount</u>	<u>Explanation(s) of Amount (must specify MOFs and FTEs)</u>
\$2,215,896	\$1,900,000	\$(315,896)	\$(315,896)	Reset to baseline appropriation.
			<u>\$(315,896)</u>	<b>Total of Explanation of Biennial Change</b>

**748 The University of Texas Rio Grande Valley School of Medicine**

GOAL: 4 Provide Non-Formula Support  
 OBJECTIVE: 1 Instruction/Operation  
 STRATEGY: 3 School of Podiatric Medicine

Service Categories:

Service: 19      Income: A.2      Age: B.3

CODE	DESCRIPTION	Exp 2023	Est 2024	Bud 2025	BL 2026	BL 2027
<b>Objects of Expense:</b>						
1001	SALARIES AND WAGES	\$0	\$1,308,513	\$1,657,398	\$1,657,398	\$1,657,398
1002	OTHER PERSONNEL COSTS	\$0	\$11,900	\$14,320	\$14,320	\$14,320
1005	FACULTY SALARIES	\$0	\$2,448,500	\$3,450,149	\$3,450,149	\$3,450,149
2005	TRAVEL	\$0	\$10,000	\$0	\$0	\$0
2009	OTHER OPERATING EXPENSE	\$0	\$2,221,087	\$878,133	\$878,133	\$878,133
<b>TOTAL, OBJECT OF EXPENSE</b>		<b>\$0</b>	<b>\$6,000,000</b>	<b>\$6,000,000</b>	<b>\$6,000,000</b>	<b>\$6,000,000</b>
<b>Method of Financing:</b>						
1	General Revenue Fund	\$0	\$6,000,000	\$6,000,000	\$6,000,000	\$6,000,000
<b>SUBTOTAL, MOF (GENERAL REVENUE FUNDS)</b>		<b>\$0</b>	<b>\$6,000,000</b>	<b>\$6,000,000</b>	<b>\$6,000,000</b>	<b>\$6,000,000</b>
<b>TOTAL, METHOD OF FINANCE (INCLUDING RIDERS)</b>					<b>\$6,000,000</b>	<b>\$6,000,000</b>
<b>TOTAL, METHOD OF FINANCE (EXCLUDING RIDERS)</b>		<b>\$0</b>	<b>\$6,000,000</b>	<b>\$6,000,000</b>	<b>\$6,000,000</b>	<b>\$6,000,000</b>
<b>FULL TIME EQUIVALENT POSITIONS:</b>		<b>0.0</b>	<b>32.4</b>	<b>44.0</b>	<b>44.0</b>	<b>44.0</b>

**748 The University of Texas Rio Grande Valley School of Medicine**

GOAL: 4 Provide Non-Formula Support

OBJECTIVE: 1 Instruction/Operation

Service Categories:

STRATEGY: 3 School of Podiatric Medicine

Service: 19

Income: A.2

Age: B.3

CODE	DESCRIPTION	Exp 2023	Est 2024	Bud 2025	BL 2026	BL 2027
------	-------------	----------	----------	----------	---------	---------

**STRATEGY DESCRIPTION AND JUSTIFICATION:**

The UTRGV School of Podiatric Medicine’s (SoPM) mission is to foster student success by inspiring, educating, and developing a student body fully prepared for podiatric residency training, becoming dedicated podiatric physicians, research scientists, public health professionals, and educators.

The SoPM was granted candidacy in June 2022 by the Council on Podiatric Medical Education (CPME), making it the first podiatry school in Texas and only the 11th in the nation. There is a great need in Texas to educate and train generations of podiatric physicians to diagnose, assess, manage, and treat conditions and diseases of the foot and ankle as well as serve the diabetic population in Texas. Including a podiatrist in the care team of a diabetic patient can reduce their risk of amputation of lower limbs by up to 85%.

The requested appropriation is needed to support operations and employees until full formula funding materializes and to meet requirements of stable and predictable revenue as the SoPM moves towards accreditation. Initially, the plan was to create a cost savings by having 1st and 2nd year podiatric medicine and medical students follow the same curriculum and learn together, but neither of the accrediting bodies recommended that approach. Instead, UTRGV separated the programs and is currently teaching podiatric medicine in Harlingen at the UTRGV Clinical Education Building.

**EXTERNAL/INTERNAL FACTORS IMPACTING STRATEGY:**

**748 The University of Texas Rio Grande Valley School of Medicine**

GOAL: 4 Provide Non-Formula Support  
 OBJECTIVE: 1 Instruction/Operation Service Categories:  
 STRATEGY: 3 School of Podiatric Medicine Service: 19 Income: A.2 Age: B.3

CODE	DESCRIPTION	Exp 2023	Est 2024	Bud 2025	BL 2026	BL 2027
------	-------------	----------	----------	----------	---------	---------

**EXPLANATION OF BIENNIAL CHANGE (includes Rider amounts):**

<u>STRATEGY BIENNIAL TOTAL - ALL FUNDS</u>		<u>BIENNIAL</u>	<u>EXPLANATION OF BIENNIAL CHANGE</u>	
<u>Base Spending (Est 2024 + Bud 2025)</u>	<u>Baseline Request (BL 2026 + BL 2027)</u>	<u>CHANGE</u>	<u>\$ Amount</u>	<u>Explanation(s) of Amount (must specify MOFs and FTEs)</u>
\$12,000,000	\$12,000,000	\$0	\$0	Reset to baseline appropriation
			<u>\$0</u>	<b>Total of Explanation of Biennial Change</b>

**748 The University of Texas Rio Grande Valley School of Medicine**

GOAL: 4 Provide Non-Formula Support  
 OBJECTIVE: 2 Exceptional Item Request  
 STRATEGY: 1 Exceptional Item Request

Service Categories:

Service: 18      Income: A.2      Age: B.3

CODE	DESCRIPTION	Exp 2023	Est 2024	Bud 2025	BL 2026	BL 2027
<b>Objects of Expense:</b>						
1001	SALARIES AND WAGES	\$0	\$0	\$0	\$0	\$0
<b>TOTAL, OBJECT OF EXPENSE</b>		<b>\$0</b>	<b>\$0</b>	<b>\$0</b>	<b>\$0</b>	<b>\$0</b>
<b>Method of Financing:</b>						
1	General Revenue Fund	\$0	\$0	\$0	\$0	\$0
<b>SUBTOTAL, MOF (GENERAL REVENUE FUNDS)</b>		<b>\$0</b>	<b>\$0</b>	<b>\$0</b>	<b>\$0</b>	<b>\$0</b>
<b>TOTAL, METHOD OF FINANCE (INCLUDING RIDERS)</b>					<b>\$0</b>	<b>\$0</b>
<b>TOTAL, METHOD OF FINANCE (EXCLUDING RIDERS)</b>		<b>\$0</b>	<b>\$0</b>	<b>\$0</b>	<b>\$0</b>	<b>\$0</b>
<b>FULL TIME EQUIVALENT POSITIONS:</b>		<b>0.0</b>	<b>0.0</b>	<b>0.0</b>	<b>0.0</b>	<b>0.0</b>

**STRATEGY DESCRIPTION AND JUSTIFICATION:**

**EXTERNAL/INTERNAL FACTORS IMPACTING STRATEGY:**

**748 The University of Texas Rio Grande Valley School of Medicine**

GOAL: 4 Provide Non-Formula Support  
 OBJECTIVE: 2 Exceptional Item Request Service Categories:  
 STRATEGY: 1 Exceptional Item Request Service: 18 Income: A.2 Age: B.3

CODE	DESCRIPTION	Exp 2023	Est 2024	Bud 2025	BL 2026	BL 2027
------	-------------	----------	----------	----------	---------	---------

**EXPLANATION OF BIENNIAL CHANGE (includes Rider amounts):**

<u>STRATEGY BIENNIAL TOTAL - ALL FUNDS</u>		<u>BIENNIAL</u>	<u>EXPLANATION OF BIENNIAL CHANGE</u>	
<u>Base Spending (Est 2024 + Bud 2025)</u>	<u>Baseline Request (BL 2026 + BL 2027)</u>	<u>CHANGE</u>	<u>\$ Amount</u>	<u>Explanation(s) of Amount (must specify MOFs and FTEs)</u>
\$0	\$0	\$0	\$0	
			<b>\$0</b>	<b>Total of Explanation of Biennial Change</b>



**748 The University of Texas Rio Grande Valley School of Medicine**

GOAL: 5 Tobacco Funds  
 OBJECTIVE: 1 Tobacco Earnings for Research Service Categories:  
 STRATEGY: 1 Tobacco Earnings from the Permanent Health Fund for Higher Ed. No. 810 Service: 19 Income: A.2 Age: B.3

CODE	DESCRIPTION	Exp 2023	Est 2024	Bud 2025	BL 2026	BL 2027
<b>Objects of Expense:</b>						
1001	SALARIES AND WAGES	\$0	\$525,336	\$0	\$0	\$0
1002	OTHER PERSONNEL COSTS	\$0	\$141,885	\$0	\$0	\$0
2003	CONSUMABLE SUPPLIES	\$39,508	\$0	\$0	\$0	\$0
2005	TRAVEL	\$0	\$14,760	\$0	\$0	\$0
2006	RENT - BUILDING	\$805,000	\$0	\$0	\$0	\$0
2007	RENT - MACHINE AND OTHER	\$351	\$0	\$0	\$0	\$0
2009	OTHER OPERATING EXPENSE	\$360,843	\$858,178	\$1,303,026	\$1,303,026	\$1,303,026
<b>TOTAL, OBJECT OF EXPENSE</b>		<b>\$1,205,702</b>	<b>\$1,540,159</b>	<b>\$1,303,026</b>	<b>\$1,303,026</b>	<b>\$1,303,026</b>
<b>Method of Financing:</b>						
810	Perm Health Fund Higher Ed, est	\$1,205,702	\$1,540,159	\$1,303,026	\$1,303,026	\$1,303,026
<b>SUBTOTAL, MOF (OTHER FUNDS)</b>		<b>\$1,205,702</b>	<b>\$1,540,159</b>	<b>\$1,303,026</b>	<b>\$1,303,026</b>	<b>\$1,303,026</b>
<b>TOTAL, METHOD OF FINANCE (INCLUDING RIDERS)</b>					<b>\$1,303,026</b>	<b>\$1,303,026</b>
<b>TOTAL, METHOD OF FINANCE (EXCLUDING RIDERS)</b>		<b>\$1,205,702</b>	<b>\$1,540,159</b>	<b>\$1,303,026</b>	<b>\$1,303,026</b>	<b>\$1,303,026</b>
<b>FULL TIME EQUIVALENT POSITIONS:</b>		<b>0.0</b>	<b>0.0</b>	<b>0.0</b>	<b>0.0</b>	<b>0.0</b>

**748 The University of Texas Rio Grande Valley School of Medicine**

GOAL: 5 Tobacco Funds  
 OBJECTIVE: 1 Tobacco Earnings for Research Service Categories:  
 STRATEGY: 1 Tobacco Earnings from the Permanent Health Fund for Higher Ed. No. 810 Service: 19 Income: A.2 Age: B.3

CODE	DESCRIPTION	Exp 2023	Est 2024	Bud 2025	BL 2026	BL 2027
------	-------------	----------	----------	----------	---------	---------

**STRATEGY DESCRIPTION AND JUSTIFICATION:**

This strategy includes the institution’s allocation of the Permanent Health Fund for Higher Education established by Section 63.001 of the Texas Education Code. The purpose of these funds includes medical research, health education, treatment programs, or state matching funds for the eminent scholars fund program.

**EXTERNAL/INTERNAL FACTORS IMPACTING STRATEGY:**

**EXPLANATION OF BIENNIAL CHANGE (includes Rider amounts):**

<u>STRATEGY BIENNIAL TOTAL - ALL FUNDS</u>		<u>BIENNIAL</u>	<u>EXPLANATION OF BIENNIAL CHANGE</u>	
<u>Base Spending (Est 2024 + Bud 2025)</u>	<u>Baseline Request (BL 2026 + BL 2027)</u>	<u>CHANGE</u>	<u>\$ Amount</u>	<u>Explanation(s) of Amount (must specify MOFs and FTEs)</u>
\$2,843,185	\$2,606,052	\$(237,133)	\$(237,133)	Due to reduction in amount allocated.
			<u>\$(237,133)</u>	<b>Total of Explanation of Biennial Change</b>

---

**SUMMARY TOTALS:**

<b>OBJECTS OF EXPENSE:</b>	<b>\$37,223,335</b>	<b>\$45,176,505</b>	<b>\$45,030,888</b>	<b>\$28,632,437</b>	<b>\$28,632,436</b>
<b>METHODS OF FINANCE (INCLUDING RIDERS):</b>				<b>\$28,632,437</b>	<b>\$28,632,436</b>
<b>METHODS OF FINANCE (EXCLUDING RIDERS):</b>	<b>\$37,223,335</b>	<b>\$45,176,505</b>	<b>\$45,030,888</b>	<b>\$28,632,437</b>	<b>\$28,632,436</b>
<b>FULL TIME EQUIVALENT POSITIONS:</b>	<b>522.3</b>	<b>496.5</b>	<b>545.2</b>	<b>545.2</b>	<b>545.2</b>

### 3.B. Rider Revisions and Additions Request

<b>Agency Code:</b> 748	<b>Agency Name:</b> University of Texas Rio Grande Valley	<b>Prepared By:</b> Michael Mueller	<b>Date:</b> August 2024	<b>Request Level:</b> 1
----------------------------	--	--	-----------------------------	----------------------------

Current Rider Number	Page Number in 2024-25 GAA	Proposed Rider Language
4	III-209	<p><b>4. Unexpended Balances Between Fiscal Years: School of Medicine.</b> Any unexpended balances as of August 31, 2024, from the appropriations identified in Strategy D.1.1, School of Medicine, are hereby appropriated to The University of Texas Rio Grande Valley School of Medicine for the same purpose for the fiscal year beginning September 1, 2024. Funds expended from appropriations identified in this strategy may be used to cover student travel expenses associated with rotations between the San Antonio, Harlingen and Edinburg campuses.</p> <p><i>U. T. System requests a change to this rider for UT Rio Grande Valley School of Medicine (RGVSOM). RGVSOM does not have a location in San Antonio. As modified, the rider does not specify exact campus locations, thereby providing flexibility for the institution in the event that medical students do future rotations outside of Harlingen and Edinburg.</i></p>
5	III-209	<p><del><b>5. Reporting Requirement on Permanent Health Fund Expenditures.</b> The University of Texas Rio Grande Valley School of Medicine shall report, by December 1 of each fiscal year, to the Legislative Budget Board, House Appropriations Committee, and Senate Finance Committee, information on the use of expenditures from appropriations provided in Strategy D.1.1, School of Medicine and Strategy E.1.1, Tobacco Earnings from the Permanent Health Fund for Higher Education.</del></p> <p><i>U. T. System requests the deletion of this reporting rider for UT Rio Grande Valley School of Medicine (RGVSOM). All other budgeting and reporting riders related to tobacco endowments have been deleted in prior sessions, leaving RGVSOM as the only institution required to report on tobacco endowment activity. No other medical school embedded in an academic institution has this requirement.</i></p>
Special Provisions Relating Only to State Agencies of Higher Education, Section 23	III-289	<p><b>Sec. 23. Driscoll Children's Hospital.</b> No funds appropriated to a health-related institution of higher education shall be used to replace or duplicate the Corpus Christi Driscoll Children's Hospital in caring for children with special health-care needs, including pediatric cardiovascular diseases, or in assuming the direct care of those children. This rider language shall not restrict the traditional referral patterns utilized by physicians to refer patients to health related institutions.</p> <p><i>U. T. System requests that this rider be limited specifically to the Driscoll Children's Hospital located in Corpus Christi, Texas, and not be applicable to other potential locations in the South Texas Region. This rider was established in the 1996-97 GAA (over 25 years ago). Driscoll has since built a facility in near proximity to a previously existing U. T. health-related institution. Application of this rider to new Driscoll locations is beyond the scope of the original intent and creates a potential infringement on the current operations and limitations on the future expansion of the U. T. institution.</i></p>

**4.A. Exceptional Item Request Schedule**  
 89th Regular Session, Agency Submission, Version 1  
 Automated Budget and Evaluation System of Texas (ABEST)

DATE: 8/14/2024  
 TIME: 5:14:20PM

Agency code: 748

Agency name: The University of Texas Rio Grande Valley School of Medicine

CODE	DESCRIPTION	Excp 2026	Excp 2027
	<b>Item Name:</b> Limb Preservation Program <b>Item Priority:</b> 1 <b>IT Component:</b> No <b>Anticipated Out-year Costs:</b> Yes <b>Involve Contracts &gt; \$50,000:</b> No <b>Includes Funding for the Following Strategy or Strategies:</b> 04-02-01 Exceptional Item Request		
<b>OBJECTS OF EXPENSE:</b>			
1001	SALARIES AND WAGES	2,500,000	2,500,000
<b>TOTAL, OBJECT OF EXPENSE</b>		<b>\$2,500,000</b>	<b>\$2,500,000</b>
<b>METHOD OF FINANCING:</b>			
1	General Revenue Fund	2,500,000	2,500,000
<b>TOTAL, METHOD OF FINANCING</b>		<b>\$2,500,000</b>	<b>\$2,500,000</b>
<b>FULL-TIME EQUIVALENT POSITIONS (FTE):</b>		25.00	25.00

**DESCRIPTION / JUSTIFICATION:**

Diabetes, obesity, and related disorders are reaching epidemic proportions in Texas and particularly within the Rio Grande Valley. Behavioral and lifestyle interventions have been largely unsuccessful in addressing the epidemic of metabolic disease indicating the urgent need for improved preventions, treatments, and management of its consequences. Untreated and uncontrolled diabetes leads to numerous limb conditions that unfortunately lead to amputation and devastating life consequences. UTRGV, through its School of Medicine and the state's only School of Podiatric Medicine seeks to establish a Limb Preservation Program to treat diabetic patients at-risk for lower extremity disease and amputations. Funds will be used to establish a multidisciplinary team of nurses, allied health professionals and physicians spanning the specialties of podiatry, endocrinology, behavioral health, infectious disease, and vascular surgery to coordinate care for patients with complex limb threatening disease. The Limb Preservation Program will operate in conjunction with the Limb Preservation Center, an outpatient wound care facility, to reduce amputations and increase interventions to improve patient outcomes. A holistic approach incorporating patient education, early identification of at-risk individuals, and specialized clinical care, will empower patients and their families with the tools and support needed to preserve limb health and enhance quality of life.

**EXTERNAL/INTERNAL FACTORS:**

Additional Information is available in the Schedule 9 submission for each non-formula support strategy.

**PCLS TRACKING KEY:**

**4.A. Exceptional Item Request Schedule**  
 89th Regular Session, Agency Submission, Version 1  
 Automated Budget and Evaluation System of Texas (ABEST)

DATE: **8/14/2024**  
 TIME: **5:14:20PM**

Agency code: **748**

Agency name: **The University of Texas Rio Grande Valley School of Medicine**

<b>CODE</b>	<b>DESCRIPTION</b>	<b>Excp 2026</b>	<b>Excp 2027</b>
-------------	--------------------	------------------	------------------

**DESCRIPTION OF ANTICIPATED OUT-YEAR COSTS :**

Continued funding of ongoing program maintenance and administrative costs.

**ESTIMATED ANTICIPATED OUT-YEAR COSTS FOR ITEM:**

<b>2028</b>	<b>2029</b>	<b>2030</b>
\$2,500,000	\$2,500,000	\$2,500,000

**4.A. Exceptional Item Request Schedule**  
 89th Regular Session, Agency Submission, Version 1  
 Automated Budget and Evaluation System of Texas (ABEST)

DATE: **8/14/2024**  
 TIME: **5:14:20PM**

Agency code: **748**

Agency name: **The University of Texas Rio Grande Valley School of Medicine**

<b>CODE</b>	<b>DESCRIPTION</b>	<b>Excp 2026</b>	<b>Excp 2027</b>
-------------	--------------------	------------------	------------------

**Item Name:** Cancer Immunology Center  
**Item Priority:** 2  
**IT Component:** No  
**Anticipated Out-year Costs:** Yes  
**Involve Contracts > \$50,000:** No  
**Includes Funding for the Following Strategy or Strategies:** 04-01-02 Cervical Dysplasia and Cancer Immunology Center

**OBJECTS OF EXPENSE:**

1001	SALARIES AND WAGES	1,421,810	1,421,810
1005	FACULTY SALARIES	1,078,190	1,078,190
<b>TOTAL, OBJECT OF EXPENSE</b>		<b>\$2,500,000</b>	<b>\$2,500,000</b>

**METHOD OF FINANCING:**

1	General Revenue Fund	2,500,000	2,500,000
<b>TOTAL, METHOD OF FINANCING</b>		<b>\$2,500,000</b>	<b>\$2,500,000</b>

**FULL-TIME EQUIVALENT POSITIONS (FTE):**

	17.10	17.10
--	-------	-------

**DESCRIPTION / JUSTIFICATION:**

UTRGV requests additional funding to support the operations of a new Cancer Center opening in 2025 with consulting services provided by the MD Anderson Cancer Center. UT Health RGV will operate this first of its kind comprehensive academic cancer treatment program in the region.

Increasing the capacity to fight cancer in the Rio Grande Valley (RGV), one of our Nation's most medically under-served regions, correlates directly with the university's and its school of medicine's mission to transform the health of the RGV by providing advanced academic medicine and research impacting local residents and communities.

**EXTERNAL/INTERNAL FACTORS:**

Additional Information is available in the Schedule 9 submission for each non-formula support strategy.

**PCLS TRACKING KEY:**

**4.A. Exceptional Item Request Schedule**  
89th Regular Session, Agency Submission, Version 1  
Automated Budget and Evaluation System of Texas (ABEST)

DATE: **8/14/2024**  
TIME: **5:14:20PM**

Agency code: **748**

Agency name: **The University of Texas Rio Grande Valley School of Medicine**

---

<b>CODE</b>	<b>DESCRIPTION</b>	<b>Excp 2026</b>	<b>Excp 2027</b>
-------------	--------------------	------------------	------------------

---

**DESCRIPTION OF ANTICIPATED OUT-YEAR COSTS :**

Continued funding of ongoing program maintenance and administrative costs.

**ESTIMATED ANTICIPATED OUT-YEAR COSTS FOR ITEM:**

<b>2028</b>	<b>2029</b>	<b>2030</b>
\$2,500,000	\$2,500,000	\$2,500,000



**4.A. Exceptional Item Request Schedule**  
 89th Regular Session, Agency Submission, Version 1  
 Automated Budget and Evaluation System of Texas (ABEST)

DATE: **8/14/2024**  
 TIME: **5:14:20PM**

Agency code: **748**

Agency name: **The University of Texas Rio Grande Valley School of Medicine**

CODE	DESCRIPTION	Excp 2026	Excp 2027
	<p><b>Item Name:</b> Limb Preservation Center  <b>Item Priority:</b> 3  <b>IT Component:</b> No  <b>Anticipated Out-year Costs:</b> Yes  <b>Involve Contracts &gt; \$50,000:</b> No</p> <p><b>Includes Funding for the Following Strategy or Strategies:</b> 03-02-01 Capital Construction Assistance Projects Revenue Bonds</p>		

**OBJECTS OF EXPENSE:**

2008	DEBT SERVICE	2,005,000	2,005,000
<b>TOTAL, OBJECT OF EXPENSE</b>		<b>2,005,000</b>	<b>2,005,000</b>

**METHOD OF FINANCING:**

1	General Revenue Fund	2,005,000	2,005,000
<b>TOTAL, METHOD OF FINANCING</b>		<b>2,005,000</b>	<b>2,005,000</b>

**DESCRIPTION / JUSTIFICATION:**

The University of Texas Rio Grande Valley seeks funding to build a new Limb Preservation Center facility on UTRGV-owned land as a component of the Diabetes Center of Excellence (DCE). The building will be dedicated to preventing limb loss and restoring function for diabetic patients facing the imminent threat of amputation. Through patient education, early identification of at-risk individuals, and specialized clinical care, the Center will empower patients and their families with the tools and support needed to preserve limb health and enhance quality of life.

The Center's multidisciplinary approach with a team of healthcare professionals, including orthopedic surgeons, vascular surgeons, wound care specialists, podiatrists, physical therapists, and other experts ensures that all limb preservation and rehabilitation aspects are considered. From diagnosis to longterm management, the Center's multidisciplinary team of specialists will collaborate closely to ensure the highest standard of care. The Center will 1) offer community-based diabetes screenings and risk assessments, 2) conduct community outreach event to raise awareness about foot health, 3) develop patient education materials in multiple languages, 4) deploy physician liaisons (marketing) to educate local providers about available services, 5) procure necessary equipment and supplies for the Center, and 6) evaluate patient outcomes and adjust protocols as needed.

**EXTERNAL/INTERNAL FACTORS:**

The Rio Grande Valley faces an exceptionally high burden of diabetes, with rates as high as 25-30% in some counties. This epidemic not only inflicts immense suffering but also exacts a substantial economic burden, with Texas bearing a yearly cost of \$25.6 billion due to diabetes. The Limb Preservation Center seeks to alleviate the suffering of those affected by diabetes and reduce the economic burden on our healthcare system by improving therapies and diagnostic tools while gaining a deeper comprehension of the nuanced facets of diabetes specific to the Rio Grande Valley. This facility will play a key role in supporting UTRGV's strategic initiatives of expanding health education and improving patient care outcomes in South Texas.

**4.A. Exceptional Item Request Schedule**  
89th Regular Session, Agency Submission, Version 1  
Automated Budget and Evaluation System of Texas (ABEST)

DATE: **8/14/2024**  
TIME: **5:14:20PM**

Agency code: **748**

Agency name: **The University of Texas Rio Grande Valley School of Medicine**

---

<u>CODE</u>	<u>DESCRIPTION</u>	<u>Excp 2026</u>	<u>Excp 2027</u>
-------------	--------------------	------------------	------------------

**PCLS TRACKING KEY:**

---

**DESCRIPTION OF ANTICIPATED OUT-YEAR COSTS :**

Continued support of Capital Construction Assistance.

**ESTIMATED ANTICIPATED OUT-YEAR COSTS FOR ITEM:**

<u>2028</u>	<u>2029</u>	<u>2030</u>
\$2,005,000	\$2,005,000	\$2,005,000

**4.B. Exceptional Items Strategy Allocation Schedule**  
 89th Regular Session, Agency Submission, Version 1  
 Automated Budget and Evaluation System of Texas (ABEST)

DATE: **8/14/2024**  
 TIME: **5:14:20PM**

Agency code: **748** Agency name: **The University of Texas Rio Grande Valley School of Medicine**

Code	Description	Excp 2026	Excp 2027
<b>Item Name:</b> Limb Preservation Program			
<b>Allocation to Strategy:</b> 4-2-1 Exceptional Item Request			
<b>OBJECTS OF EXPENSE:</b>			
1001	SALARIES AND WAGES	2,500,000	2,500,000
<b>TOTAL, OBJECT OF EXPENSE</b>		<b>\$2,500,000</b>	<b>\$2,500,000</b>
<b>METHOD OF FINANCING:</b>			
1	General Revenue Fund	2,500,000	2,500,000
<b>TOTAL, METHOD OF FINANCING</b>		<b>\$2,500,000</b>	<b>\$2,500,000</b>
<b>FULL-TIME EQUIVALENT POSITIONS (FTE):</b>		25.0	25.0

**4.B. Exceptional Items Strategy Allocation Schedule**  
 89th Regular Session, Agency Submission, Version 1  
 Automated Budget and Evaluation System of Texas (ABEST)

DATE: **8/14/2024**  
 TIME: **5:14:20PM**

Agency code: **748** Agency name: **The University of Texas Rio Grande Valley School of Medicine**

Code	Description	Excp 2026	Excp 2027
<b>Item Name:</b> Cancer Immunology Center			
<b>Allocation to Strategy:</b> 4-1-2 Cervical Dysplasia and Cancer Immunology Center			
<b>OBJECTS OF EXPENSE:</b>			
1001	SALARIES AND WAGES	1,421,810	1,421,810
1005	FACULTY SALARIES	1,078,190	1,078,190
<b>TOTAL, OBJECT OF EXPENSE</b>		<b>\$2,500,000</b>	<b>\$2,500,000</b>
<b>METHOD OF FINANCING:</b>			
1	General Revenue Fund	2,500,000	2,500,000
<b>TOTAL, METHOD OF FINANCING</b>		<b>\$2,500,000</b>	<b>\$2,500,000</b>
<b>FULL-TIME EQUIVALENT POSITIONS (FTE):</b>		17.1	17.1

Agency code: 748 Agency name: The University of Texas Rio Grande Valley School of Medicine

Code	Description	Excp 2026	Excp 2027
<b>Item Name:</b> Limb Preservation Center			
<b>Allocation to Strategy:</b> 3-2-1 Capital Construction Assistance Projects Revenue Bonds			
<b>OBJECTS OF EXPENSE:</b>			
2008	DEBT SERVICE	2,005,000	2,005,000
<b>TOTAL, OBJECT OF EXPENSE</b>		<b>\$2,005,000</b>	<b>\$2,005,000</b>
<b>METHOD OF FINANCING:</b>			
1	General Revenue Fund	2,005,000	2,005,000
<b>TOTAL, METHOD OF FINANCING</b>		<b>\$2,005,000</b>	<b>\$2,005,000</b>

**4.C. Exceptional Items Strategy Request**  
 89th Regular Session, Agency Submission, Version 1  
 Automated Budget and Evaluation System of Texas (ABEST)

**DATE: 8/14/2024**  
**TIME: 5:14:21PM**

Agency Code: **748** Agency name: **The University of Texas Rio Grande Valley School of Medicine**

GOAL: 3 Provide Infrastructure Support

OBJECTIVE: 2 Infrastructure Support

Service Categories:

STRATEGY: 1 Capital Construction Assistance Projects Revenue Bonds

Service: 10 Income: A.2 Age: B.3

<b>CODE DESCRIPTION</b>	<b>Exp 2026</b>	<b>Exp 2027</b>
-------------------------	-----------------	-----------------

**OBJECTS OF EXPENSE:**

2008 DEBT SERVICE	2,005,000	2,005,000
-------------------	-----------	-----------

<b>Total, Objects of Expense</b>	<b>\$2,005,000</b>	<b>\$2,005,000</b>
----------------------------------	--------------------	--------------------

**METHOD OF FINANCING:**

1 General Revenue Fund	2,005,000	2,005,000
------------------------	-----------	-----------

<b>Total, Method of Finance</b>	<b>\$2,005,000</b>	<b>\$2,005,000</b>
---------------------------------	--------------------	--------------------

**EXCEPTIONAL ITEM(S) INCLUDED IN STRATEGY:**

Limb Preservation Center

**4.C. Exceptional Items Strategy Request**  
 89th Regular Session, Agency Submission, Version 1  
 Automated Budget and Evaluation System of Texas (ABEST)

**DATE:** 8/14/2024  
**TIME:** 5:14:21PM

Agency Code: **748** Agency name: **The University of Texas Rio Grande Valley School of Medicine**

GOAL: 4 Provide Non-Formula Support

OBJECTIVE: 1 Instruction/Operation

Service Categories:

STRATEGY: 2 Cervical Dysplasia and Cancer Immunology Center

Service: 19 Income: A.2 Age: B.3

<b>CODE DESCRIPTION</b>	<b>Excp 2026</b>	<b>Excp 2027</b>
-------------------------	------------------	------------------

**OBJECTS OF EXPENSE:**

1001 SALARIES AND WAGES	1,421,810	1,421,810
1005 FACULTY SALARIES	1,078,190	1,078,190
<b>Total, Objects of Expense</b>	<b>\$2,500,000</b>	<b>\$2,500,000</b>

**METHOD OF FINANCING:**

1 General Revenue Fund	2,500,000	2,500,000
<b>Total, Method of Finance</b>	<b>\$2,500,000</b>	<b>\$2,500,000</b>

**FULL-TIME EQUIVALENT POSITIONS (FTE):**

17.1	17.1
------	------

**EXCEPTIONAL ITEM(S) INCLUDED IN STRATEGY:**

Cancer Immunology Center

**4.C. Exceptional Items Strategy Request**  
 89th Regular Session, Agency Submission, Version 1  
 Automated Budget and Evaluation System of Texas (ABEST)

**DATE:** 8/14/2024  
**TIME:** 5:14:21PM

Agency Code: **748** Agency name: **The University of Texas Rio Grande Valley School of Medicine**

GOAL: 4 Provide Non-Formula Support

OBJECTIVE: 2 Exceptional Item Request

STRATEGY: 1 Exceptional Item Request

Service Categories:

Service: 18 Income: A.2 Age: B.3

<b>CODE DESCRIPTION</b>	<b>Excp 2026</b>	<b>Excp 2027</b>
-------------------------	------------------	------------------

**OBJECTS OF EXPENSE:**

1001 SALARIES AND WAGES	2,500,000	2,500,000
<b>Total, Objects of Expense</b>	<b>\$2,500,000</b>	<b>\$2,500,000</b>

**METHOD OF FINANCING:**

1 General Revenue Fund	2,500,000	2,500,000
<b>Total, Method of Finance</b>	<b>\$2,500,000</b>	<b>\$2,500,000</b>

**FULL-TIME EQUIVALENT POSITIONS (FTE):** 25.0 25.0

**EXCEPTIONAL ITEM(S) INCLUDED IN STRATEGY:**

Limb Preservation Program



**6.H Estimated Funds Outside the Institution's Bill Pattern**

**University of Texas Rio Grande Valley School of Medicine (748)**

**2024-25 and 2026-27 Biennia**

	2024 - 2025 Biennium				2026 - 2027 Biennium			
	FY 2024 Revenue	FY 2025 Revenue	Biennium Total	Percent of Total	FY 2026 Revenue	FY 2027 Revenue	Biennium Total	Percent of Total
<b>APPROPRIATED SOURCES INSIDE THE BILL PATTERN</b>								
State Appropriations (excluding HEGI & State Paid Fringes)	\$ 41,903,416	\$ 50,350,089	\$ 92,253,505		\$ 51,357,091	\$ 52,384,233	\$ 103,741,323	
Tuition and Fees (net of Discounts and Allowances)	992,078	945,617	1,937,695		945,617	945,617	1,891,234	
Endowment and Interest Income	-	-	-		-	-	-	
Sales and Services of Educational Activities (net)	-	-	-		-	-	-	
Sales and Services of Hospitals (net)	-	-	-		-	-	-	
Other Income	-	-	-		-	-	-	
<b>Total</b>	<b>42,895,494</b>	<b>51,295,706</b>	<b>94,191,200</b>	<b>35.8%</b>	<b>52,302,708</b>	<b>53,329,850</b>	<b>105,632,557</b>	<b>38.3%</b>
<b>APPROPRIATED SOURCES OUTSIDE THE BILL PATTERN</b>								
State Appropriations (HEGI & State Paid Fringes)	8,129,574	8,446,674	16,576,248		8,615,607	8,787,920	17,403,527	
Higher Education Assistance Funds	-	-	-		-	-	-	
Available University Fund	-	-	-		-	-	-	
State Grants and Contracts	19,815,150	11,728,158	31,543,308		11,962,721	12,201,976	24,164,697	
<b>Total</b>	<b>27,944,724</b>	<b>20,174,832</b>	<b>48,119,556</b>	<b>18.3%</b>	<b>20,578,329</b>	<b>20,989,895</b>	<b>41,568,224</b>	<b>15.1%</b>
<b>NON-APPROPRIATED SOURCES (All sources)</b>								
Tuition and Fees (net of Discounts and Allowances)	2,052,656	2,120,577	4,173,233		2,120,577	2,120,577	4,241,154	
Federal Grants and Contracts	4,148,816	5,830,176	9,978,992		5,946,780	6,065,715	12,012,495	
State Grants and Contracts	(6,439,498)	(3,481,245)	(9,920,743)		(3,550,870)	(3,621,887)	(7,172,757)	
Local Government Grants and Contracts	-	-	-		-	-	-	
Private Gifts and Grants	26,917,112	24,836,440	51,753,552		25,333,169	25,839,832	51,173,001	
Endowment and Interest Income	2,137,107	2,364,382	4,501,489		2,411,670	2,459,903	4,871,573	
Sales and Services of Educational Activities (net)	347,784	1,533,816	1,881,600		1,564,492	1,595,782	3,160,274	
Sales and Services of Hospitals (net)	-	-	-		-	-	-	
Professional Fees (net)	18,145,869	19,510,355	37,656,224		19,900,562	20,298,573	40,199,135	
Auxiliary Enterprises (net)	-	-	-		-	-	-	
Other Income	10,738,581	9,785,273	20,523,854		9,980,978	10,180,598	20,161,576	
<b>Total</b>	<b>58,048,427</b>	<b>62,499,774</b>	<b>120,548,201</b>	<b>45.9%</b>	<b>63,707,358</b>	<b>64,939,094</b>	<b>128,646,451</b>	<b>46.6%</b>
<b>TOTAL SOURCES</b>	<b>\$ 128,888,645</b>	<b>\$ 133,970,312</b>	<b>\$ 262,858,957</b>	<b>100.0%</b>	<b>\$ 136,588,394</b>	<b>\$ 139,258,838</b>	<b>\$ 275,847,233</b>	<b>100.0%</b>

**8. Summary of Requests for Facilities-Related Projects**  
89th Regular Session, Agency Submission, Version 1

<b>Agency Code: 748</b>		<b>Agency: University of Texas Rio Grande Valley School of Medicine</b>		<b>Prepared by: Michael Mueller</b>											
<b>Date: August 9, 2024</b>				<b>Amount Requested</b>											
		<b>Project Category</b>													
<b>Project ID #</b>	<b>Capital Expenditure Category</b>	<b>Project Description</b>	<b>New Construction</b>	<b>Health and Safety</b>	<b>Deferred Maintenance</b>	<b>Maintenance</b>	<b>2026-27 Total Amount Requested</b>	<b>MOF Code #</b>	<b>MOF Requested</b>	<b>Can this project be partially funded?</b>	<b>Requested in Prior Session?</b>	<b>Value of Existing Capital Projects</b>	<b>2026-27 Estimated Debt Service (If Applicable)</b>	<b>Debt Service MOF Code #</b>	<b>Debt Service MOF Requested</b>
1	Construction of Buildings and Facilities	Limb Preservation Center	\$ 23,000,000				\$ 23,000,000		CCAP	Yes	No	\$ -	\$ 4,010,000	1	General Revenue

**89th Regular Session, Agency Submission, Version 1**  
Automated Budget and Evaluation System of Texas (ABEST)

**748 The University of Texas Rio Grande Valley School of Medicine**

	Act 2023	Act 2024	Bud 2025	Est 2026	Est 2027
<b>Gross Tuition</b>					
Gross Resident Tuition	1,528,770	1,804,525	1,971,550	1,971,550	1,971,550
Gross Non-Resident Tuition	85,150	127,725	117,900	117,900	117,900
<b>Gross Tuition</b>	<b>1,613,920</b>	<b>1,932,250</b>	<b>2,089,450</b>	<b>2,089,450</b>	<b>2,089,450</b>
Less: Resident Waivers and Exemptions (excludes Hazlewood)	(19,347)	(13,100)	(26,200)	(26,200)	(26,200)
Less: Non-Resident Waivers and Exemptions	(26,200)	(13,100)	(65,500)	(65,500)	(65,500)
Less: Hazlewood Exemptions	(34,772)	(19,650)	(13,100)	(13,100)	(13,100)
Less: Board Authorized Tuition Increases (TX. Educ. Code Ann. Sec. 54.008)	0	0	0	0	0
Less: Tuition increases charged to doctoral students with hours in excess of 100 (TX. Educ. Code Ann. Sec. 54.012)	0	0	0	0	0
Less: Tuition increases charged to undergraduate students with excessive hours above degree requirements. (TX. Educ. Code Ann. Sec. 61.0595)	0	0	0	0	0
Less: Tuition rebates for certain undergraduates (TX. Educ. Code Ann. Sec. 54.0065)	0	0	0	0	0
Plus: Tuition waived for Students 55 Years or Older (TX. Educ. Code Ann. Sec. 54.263)	0	0	0	0	0
Less: Tuition for repeated or excessive hours (TX. Educ. Code Ann. Sec. 54.014)	0	0	0	0	0
Plus: Tuition waived for Texas Grant Recipients (TX. Educ. Code Ann. Sec. 56.307)	0	0	0	0	0
<b>Subtotal</b>	<b>1,533,601</b>	<b>1,886,400</b>	<b>1,984,650</b>	<b>1,984,650</b>	<b>1,984,650</b>
Less: Transfer of funds for Texas Public Education Grants Program (Tex. Educ. Code Ann. Sec. 56c) and for Emergency Loans (Tex. Educ. Code Ann. Sec. 56d)	(188,371)	(280,997)	(291,411)	(291,411)	(291,411)
Less: Transfer of Funds (2%) for Physician/Dental Loans (Medical Schools)	0	0	0	0	0
Less: Statutory Tuition (Tx. Educ. Code Ann. Sec. 54.051) Set Aside for Doctoral Incentive Loan Repayment Program (Tx. Educ. Code Ann. Sec. 56.095)	0	0	0	0	0
Less: Other Authorized Deduction					
<b>Net Tuition</b>	<b>1,345,230</b>	<b>1,605,403</b>	<b>1,693,239</b>	<b>1,693,239</b>	<b>1,693,239</b>
Student Teaching Fees	0	0	0	0	0

**89th Regular Session, Agency Submission, Version 1**  
Automated Budget and Evaluation System of Texas (ABEST)

**748 The University of Texas Rio Grande Valley School of Medicine**

	Act 2023	Act 2024	Bud 2025	Est 2026	Est 2027
Special Course Fees	0	0	0	0	0
Laboratory Fees	14,244	16,920	18,060	18,060	18,060
<b>Subtotal, Tuition and Fees (Formula Amounts for Health-Related Institutions)</b>	<b>1,359,474</b>	<b>1,622,323</b>	<b>1,711,299</b>	<b>1,711,299</b>	<b>1,711,299</b>
<b>OTHER INCOME</b>					
<b>Interest on General Funds:</b>					
Local Funds in State Treasury	0	0	0	0	0
Funds in Local Depositories, e.g., local amounts	0	0	0	0	0
Other Income (Itemize)					
<b>Subtotal, Other Income</b>	<b>0</b>	<b>0</b>	<b>0</b>	<b>0</b>	<b>0</b>
<b>Subtotal, Other Educational and General Income</b>	<b>1,359,474</b>	<b>1,622,323</b>	<b>1,711,299</b>	<b>1,711,299</b>	<b>1,711,299</b>
Less: O.A.S.I. Applicable to Educational and General Local Funds Payrolls	(66,365)	(81,724)	(86,454)	(86,454)	(86,454)
Less: Teachers Retirement System and ORP Proportionality for Educational and General Funds	(67,637)	(88,666)	(91,809)	(91,809)	(91,809)
Less: Staff Group Insurance Premiums	(739,971)	(854,526)	(138,000)	(138,000)	(138,000)
<b>Total, Other Educational and General Income (Formula Amounts for General Academic Institutions)</b>	<b>485,501</b>	<b>597,407</b>	<b>1,395,036</b>	<b>1,395,036</b>	<b>1,395,036</b>
<b>Reconciliation to Summary of Request for FY 2019-2021:</b>					
Plus: Transfer of Funds for Texas Public Education Grants Program and Physician Loans	188,371	280,997	291,411	291,411	291,411
Plus: Transfer of Funds 2% for Physician/Dental Loans (Medical Schools)	0	0	0	0	0
Plus: Transfer of Funds for Cancellation of Student Loans of Physicians	0	0	0	0	0
Plus: Organized Activities	0	0	0	0	0
Plus: Staff Group Insurance Premiums	739,971	854,526	138,000	138,000	138,000
Plus: Board-authorized Tuition Income	0	0	0	0	0
Plus: Tuition Increases Charged to Doctoral Students with Hours in Excess of 100	0	0	0	0	0
Plus: Tuition Increases Charged to Undergraduate Students with Excessive Hours above Degree Requirements (TX. Educ. Code Ann. Sec. 61.0595)	0	0	0	0	0

89th Regular Session, Agency Submission, Version 1  
 Automated Budget and Evaluation System of Texas (ABEST)

748 The University of Texas Rio Grande Valley School of Medicine

	Act 2023	Act 2024	Bud 2025	Est 2026	Est 2027
Plus: Tuition rebates for certain undergraduates (TX Educ.Code Ann. Sec. 54.0065)	0	0	0	0	0
Plus: Tuition for repeated or excessive hours (TX. Educ. Code Ann. Sec. 54.014)	0	0	0	0	0
Less: Tuition Waived for Students 55 Years or Older	0	0	0	0	0
Less: Tuition Waived for Texas Grant Recipients	0	0	0	0	0
<b>Total, Other Educational and General Income Reported on Summary of Request</b>	<b>1,413,843</b>	<b>1,732,930</b>	<b>1,824,447</b>	<b>1,824,447</b>	<b>1,824,447</b>

748 The University of Texas Rio Grande Valley School of Medicine

	Act 2023	Act 2024	Bud 2025	Est 2026	Est 2027
General Revenue Transfers					
Transfer from Coordinating Board for Texas College Work Study Program (2021, 2022, 2023)	0	0	0	0	0
Transfer from Coordinating Board for Professional Nursing Shortage Reduction Program	0	0	0	0	0
Transfer of GR Group Insurance Premium from Comptroller (UT and TAMU Components only)	2,860,263	3,088,974	3,088,974	0	0
Less: Transfer to Other Institutions	0	0	0	0	0
Less: Transfer to Department of Health, Disproportionate Share - State-Owned Hospitals (2021, 2022, 2023)	0	0	0	0	0
Other (Itemize)					
TX HHSC Mental Health Psy Service Resident	242,326	243,181	300,000	0	0
Texas Child Mental Health Consortium	4,494,969	7,955,150	4,378,158	0	0
Other: Fifth Year Accounting Scholarship	0	0	0	0	0
Texas Grants	0	0	0	0	0
B-on-Time Program	0	0	0	0	0
Texas Research Incentive Program	0	0	0	0	0
Less: Transfer to System Administration	0	0	0	0	0
GME Expansion	11,864,012	11,616,819	7,050,000	0	0
<b>Subtotal, General Revenue Transfers</b>	<b>19,461,570</b>	<b>22,904,124</b>	<b>14,817,132</b>	<b>0</b>	<b>0</b>
General Revenue HEF	0	0	0	0	0
Transfer from Available University Funds (UT, A&M and Prairie View A&M Only)	0	0	0	0	0
Other Additions (Itemize)					
Increase Capital Projects - Educational and General Funds	0	0	0	0	0
Transfer from Department of Health, Disproportionate Share - State-owned Hospitals (2021, 2022, 2023)	0	0	0	0	0
Transfers from Other Funds, e.g., Designated funds transferred for educational and general activities (Itemize)	0	0	0	0	0
Other (Itemize)					
<b>Gross Designated Tuition (Sec. 54.0513)</b>	<b>2,612,879</b>	<b>3,487,380</b>	<b>3,428,213</b>	<b>4,723,220</b>	<b>5,732,755</b>
<b>Indirect Cost Recovery (Sec. 145.001(d))</b>	<b>3,089,683</b>	<b>3,961,613</b>	<b>4,298,887</b>	<b>4,298,887</b>	<b>4,298,887</b>

89th Regular Session, Agency Submission, Version 1  
Automated Budget and Evaluation System of Texas (ABEST)

---

**748 The University of Texas Rio Grande Valley School of Medicine**

---

	<b>Act 2023</b>	<b>Act 2024</b>	<b>Bud 2025</b>	<b>Est 2026</b>	<b>Est 2027</b>
<b>Correctional Managed Care Contracts</b>	<b>0</b>	<b>0</b>	<b>0</b>	<b>0</b>	<b>0</b>

---

**748 The University of Texas Rio Grande Valley School of Medicine**

	<b>E&amp;G Enrollment</b>	<b>GR Enrollment</b>	<b>GR-D/OEGI Enrollment</b>	<b>Total E&amp;G (Check)</b>	<b>Local Non-E&amp;G</b>
<b>GR &amp; GR-D Percentages</b>					
GR %		96.73%			
GR-D/Other %		3.27%			
<b>Total Percentage</b>		100.00%			
<b>FULL TIME ACTIVES</b>					
1a Employee Only	300	290	10	300	305
2a Employee and Children	61	59	2	61	45
3a Employee and Spouse	35	34	1	35	23
4a Employee and Family	54	52	2	54	51
5a Eligible, Opt Out	1	1	0	1	1
6a Eligible, Not Enrolled	0	0	0	0	4
<b>Total for This Section</b>	<b>451</b>	<b>436</b>	<b>15</b>	<b>451</b>	<b>429</b>
<b>PART TIME ACTIVES</b>					
1b Employee Only	1	1	0	1	0
2b Employee and Children	1	1	0	1	0
3b Employee and Spouse	0	0	0	0	1
4b Employee and Family	0	0	0	0	1
5b Eligible, Opt Out	0	0	0	0	0
6b Eligible, Not Enrolled	2	2	0	2	7
<b>Total for This Section</b>	<b>4</b>	<b>4</b>	<b>0</b>	<b>4</b>	<b>9</b>
<b>Total Active Enrollment</b>	<b>455</b>	<b>440</b>	<b>15</b>	<b>455</b>	<b>438</b>



748 The University of Texas Rio Grande Valley School of Medicine

	E&G Enrollment	GR Enrollment	GR-D/OEGI Enrollment	Total E&G (Check)	Local Non-E&G
<b>FULL TIME RETIREES by ERS</b>					
1c Employee Only	13	13	0	13	4
2c Employee and Children	0	0	0	0	0
3c Employee and Spouse	1	1	0	1	1
4c Employee and Family	0	0	0	0	0
5c Eligible, Opt Out	0	0	0	0	0
6c Eligible, Not Enrolled	0	0	0	0	0
<b>Total for This Section</b>	<b>14</b>	<b>14</b>	<b>0</b>	<b>14</b>	<b>5</b>
<b>PART TIME RETIREES by ERS</b>					
1d Employee Only	0	0	0	0	0
2d Employee and Children	0	0	0	0	0
3d Employee and Spouse	0	0	0	0	0
4d Employee and Family	0	0	0	0	0
5d Eligible, Opt Out	0	0	0	0	0
6d Eligible, Not Enrolled	0	0	0	0	0
<b>Total for This Section</b>	<b>0</b>	<b>0</b>	<b>0</b>	<b>0</b>	<b>0</b>
<b>Total Retirees Enrollment</b>	<b>14</b>	<b>14</b>	<b>0</b>	<b>14</b>	<b>5</b>
<b>TOTAL FULL TIME ENROLLMENT</b>					
1e Employee Only	313	303	10	313	309
2e Employee and Children	61	59	2	61	45
3e Employee and Spouse	36	35	1	36	24
4e Employee and Family	54	52	2	54	51
5e Eligible, Opt Out	1	1	0	1	1
6e Eligible, Not Enrolled	0	0	0	0	4
<b>Total for This Section</b>	<b>465</b>	<b>450</b>	<b>15</b>	<b>465</b>	<b>434</b>

748 The University of Texas Rio Grande Valley School of Medicine

	E&G Enrollment	GR Enrollment	GR-D/OEGI Enrollment	Total E&G (Check)	Local Non-E&G
<b>TOTAL ENROLLMENT</b>					
1f Employee Only	314	304	10	314	309
2f Employee and Children	62	60	2	62	45
3f Employee and Spouse	36	35	1	36	25
4f Employee and Family	54	52	2	54	52
5f Eligible, Opt Out	1	1	0	1	1
6f Eligible, Not Enrolled	2	2	0	2	11
<b>Total for This Section</b>	<b>469</b>	<b>454</b>	<b>15</b>	<b>469</b>	<b>443</b>

**Higher Education Schedule 4: Computation of OASI**  
 89th Regular Session, Agency Submission, Version 1  
 Automated Budget and Evaluation System of Texas (ABEST)

**Agency 748 The University of Texas Rio Grande Valley School of Medicine**

Proportionality Percentage Based on Comptroller Accounting Policy Statement #011, Exhibit 2	2023		2024		2025		2026		2027	
	<u>% to Total</u>	<u>Allocation of OASI</u>	<u>% to Total</u>	<u>Allocation of OASI</u>	<u>% to Total</u>	<u>Allocation of OASI</u>	<u>% to Total</u>	<u>Allocation of OASI</u>	<u>% to Total</u>	<u>Allocation of OASI</u>
General Revenue (% to Total)	97.1800	\$2,287,002	96.7300	\$2,417,476	96.7800	\$2,598,446	96.7800	\$2,598,446	96.7800	\$2,598,446
Other Educational and General Funds (% to Total)	2.8200	\$66,365	3.2700	\$81,724	3.2200	\$86,454	3.2200	\$86,454	3.2200	\$86,454
Health-Related Institutions Patient Income (% to Total)	0.0000	\$0	0.0000	\$0	0.0000	\$0	0.0000	\$0	0.0000	\$0
<b>Grand Total, OASI (100%)</b>	<b>100.0000</b>	<b>\$2,353,367</b>	<b>100.0000</b>	<b>\$2,499,200</b>	<b>100.0000</b>	<b>\$2,684,900</b>	<b>100.0000</b>	<b>\$2,684,900</b>	<b>100.0000</b>	<b>\$2,684,900</b>

**Higher Education Schedule 5: Calculation of Retirement Proportionality and ORP Differential**  
 89th Regular Session, Agency Submission, Version 1

8/14/2024 5:14:22PM

Automated Budget and Evaluation System of Texas (ABEST)

**748 The University of Texas Rio Grande Valley School of Medicine**

Description	Act 2023	Act 2024	Bud 2025	Est 2026	Est 2027
<b>Proportionality Amounts</b>					
Gross Educational and General Payroll - Subject To TRS Retirement	17,651,988	21,786,667	23,294,545	23,294,545	23,294,545
Employer Contribution to TRS Retirement Programs	1,412,159	1,797,400	1,921,800	1,921,800	1,921,800
Gross Educational and General Payroll - Subject To ORP Retirement	14,944,318	13,850,000	14,081,818	14,081,818	14,081,818
Employer Contribution to ORP Retirement Programs	986,325	914,100	929,400	929,400	929,400
<b>Proportionality Percentage</b>					
General Revenue	97.1800 %	96.7300 %	96.7800 %	96.7800 %	96.7800 %
Other Educational and General Income	2.8200 %	3.2700 %	3.2200 %	3.2200 %	3.2200 %
Health-related Institutions Patient Income	0.0000 %	0.0000 %	0.0000 %	0.0000 %	0.0000 %
<b>Proportional Contribution</b>					
Other Educational and General Proportional Contribution (Other E&G percentage x Total Employer Contribution to Retirement Programs)	67,637	88,666	91,809	91,809	91,809
HRI Patient Income Proportional Contribution (HRI Patient Income percentage x Total Employer Contribution To Retirement Programs)	0	0	0	0	0
<b>Differential</b>					
Differential Percentage	1.9000 %	1.9000 %	1.9000 %	1.9000 %	1.9000 %
Gross Payroll Subject to Differential - Optional Retirement Program	14,944,318	13,850,000	14,081,818	14,081,818	14,081,818
<b>Total Differential</b>	<b>283,942</b>	<b>263,150</b>	<b>267,555</b>	<b>267,555</b>	<b>267,555</b>

**Higher Education Schedule 7: Personnel**  
 89th Regular Session, Agency Submission, Version 1  
 Automated Budget and Evaluation System of Texas (ABEST)

Date: 8/14/2024  
 Time: 5:14:23PM

Agency code: **748** Agency name: **UT Rio Grande Valley School of Med**

	Actual 2023	Actual 2024	Budgeted 2025	Estimated 2026	Estimated 2027
<b>Part A.</b>					
<b>FTE Positions</b>					
<b>Directly Appropriated Funds (Bill Pattern)</b>					
Educational and General Funds Faculty Employees	76.0	76.0	79.3	79.3	79.3
Educational and General Funds Non-Faculty Employees	284.4	295.4	343.9	343.9	343.9
<b>Subtotal, Directly Appropriated Funds</b>	<b>360.4</b>	<b>371.4</b>	<b>423.2</b>	<b>423.2</b>	<b>423.2</b>
<b>Other Appropriated Funds</b>					
GME Expansion	161.9	125.1	122.0	122.0	122.0
<b>Subtotal, Other Appropriated Funds</b>	<b>161.9</b>	<b>125.1</b>	<b>122.0</b>	<b>122.0</b>	<b>122.0</b>
<b>Subtotal, All Appropriated</b>	<b>522.3</b>	<b>496.5</b>	<b>545.2</b>	<b>545.2</b>	<b>545.2</b>
Non Appropriated Funds Employees	464.8	408.9	404.8	404.8	404.8
<b>Subtotal, Other Funds &amp; Non-Appropriated</b>	<b>464.8</b>	<b>408.9</b>	<b>404.8</b>	<b>404.8</b>	<b>404.8</b>
<b>GRAND TOTAL</b>	<b>987.1</b>	<b>905.4</b>	<b>950.0</b>	<b>950.0</b>	<b>950.0</b>

Higher Education Schedule 8A: Capital Construction Assistance Projects Revenue Bond Projects

89th Regular Session, Agency Submission, Version 1  
Automated Budget and Evaluation System of Texas (ABEST)

DATE: 8/14/2024  
TIME: 5:14:23PM

---

Agency 748 The University of Texas Rio Grande Valley School of Medicine

<b>Project Priority:</b>	<b>Project Code:</b>	<b>Capital Construction Assistance Projects Revenue Bond Request</b>	<b>Total Project Cost</b>	<b>Cost Per Total Gross Square Feet</b>
1	1	\$ 23,000,000	\$ 35,000,000	\$ 5,000
<b>Name of Proposed Facility:</b>		<b>Project Type:</b>		
Limb Preservation Center		Limb Preservation Center		
<b>Location of Facility:</b>		<b>Type of Facility:</b>		
Harlingen		New Construction		
<b>Project Start Date:</b>		<b>Project Completion Date:</b>		
09/19/2025		05/14/2029		
<b>Gross Square Feet:</b>		<b>Net Assignable Square Feet in Project</b>		
7,000		3,500		

---

**Project Description**

The Limb Preservation Center will be a component of the UTRGV Diabetes Center of Excellence and will be dedicated to preventing limb loss and restoring function for diabetic patients facing the imminent threat of amputation. The Rio Grande Valley faces an exceptionally high burden of diabetes, and this facility will play a key role in supporting the strategic initiatives of expanding health education and improving patient care outcomes in South Texas. The Center’s multidisciplinary approach with a team of healthcare professionals, including orthopedic surgeons, vascular surgeons, wound care specialists, podiatrists, physical therapists, and other experts ensures that all limb preservation and rehabilitation aspects are considered. From diagnosis to longterm management, the Center’s multidisciplinary team of specialists will collaborate closely to ensure the highest standard of care. The total project cost will be \$35M, with \$12M anticipated to be grant-funded.

---

748 The University of Texas Rio Grande Valley School of Medicine

---

**Cervical Dysplasia and Cancer Immunology Center**

<b>(1) Year Non-Formula Support Item First Funded:</b>	2020
Year Non-Formula Support Item Established:	2020
Original Appropriation:	\$2,712,000

**(2) Mission:**

Funds will support the development of a nationally recognized center for cancer research and treatment (with focus in immunotherapy) that advances excellence in research, education and innovation in patient care for the benefit of the Rio Grande Valley (RGV) community.

Support allows the UTRGV School of Medicine (SoM) to build a critical mass of basic science and translational cancer researchers as well as cancer specialists in the South Texas region; the increased capacity will help keep the local Hispanic population in the region for cancer treatment, reversing a trend that has forced generations of Valley residents to travel hundreds of miles for treatment at great personal expense of time and money. The Center will improve the health of vulnerable, Hispanic populations in the region and beyond.

The funding will help fulfill the School of Medicine’s mission to transform the health of the Rio Grande Valley and beyond by providing advanced academic medicine through five pillars: Innovative education; Life-changing research and discoveries; High quality patient-centered care; Serving its community; and Sustainability and a culture of entrepreneurship.

**(3) (a) Major Accomplishments to Date:**

A fully functional division of Immunology and Microbiology is now established under a new Medicine and Oncology department. The department is performing cutting-edge cancer research with the recruitment of 11 established and early-stage cancer researchers. A cancer service line director and chair of department has been hired to oversee the development of the new Cancer and Surgery Center which opens in early 2025.

Additionally, UTRGV’s So. Texas Center of Excellence on Cancer Research has brought together all cancer researchers as a unified cancer research resource in the Rio Grande Valley.

The recruitment of all planned researchers has been completed, establishing a sizeable community of cancer researchers to address the needs of the Rio Grande Valley. These researchers are publishing manuscripts in top rated journals and successfully attracting NIH and CPRIT funding.

The UTRGV SOM’s Biomedical Research facility in McAllen houses 16 research labs, a vivarium, microscopy, an imaging center, an auditorium, and incubator space for biotech startups, as well as core facilities in flow cytometry, confocal microscopy, histopathology, and small animal molecular imaging allowing for multidisciplinary collaborations, including human genetics and genomics experts from the South Texas Diabetes and Obesity Institute along with local health care systems. This facility also allows researchers to establish high level national and international collaborations with Tier 1 institutions.

**(3) (b) Major Accomplishments Expected During the Next 2 Years:**

---

748 The University of Texas Rio Grande Valley School of Medicine

---

National and international recognition for UTRGV's cancer research program that advances excellence in cancer research, education, and innovation.

Increase extramural funding opportunities.

Grow the cancer research workforce in the RGV.

Attract and establish cancer focused biotech organizations to grow job opportunities in the RGV.

Improve health of vulnerable, Hispanic populations in the region and beyond.

Address determinants of cancer health disparities to reduce the burden of liver, gall bladder, GI, and cervical cancers.

Develop more cancer research related educational and clinical activities.

Establish a cohort of tumor biorepository from local Hispanic patients to understand the biology of cancer progression in Hispanic populations.

**WITH EXCEPTIONAL ITEM FUNDING:**

Support the operations of the new Cancer Center, including operation of the clinical oncology program.

Recruit and retain physician faculty trained in medical oncology, radiation oncology, surgical oncology, and clinical cancer research, as well as nursing and other clinical support.

Support 17 of 58 FTEs increasing the region's capacity to combat cancer and to build-up oncology pharmacy services.

Recruit and retain an Interventional Radiologist.

Contract services for medical physician support for radiation oncology and anesthesiology in the new Center.

Recruit and retain physician faculty trained in oncology and clinical cancer research and staff to support clinical operations and research.

**(4) Funding Source Prior to Receiving Non-Formula Support Funding:**

NONE

**(5) Formula Funding:**

N/A

**(6) Category:**

Research Support



---

748 The University of Texas Rio Grande Valley School of Medicine

---

**(7) Transitional Funding:**

N

**(8) Non-General Revenue Sources of Funding:**

The City of McAllen has allowed a portion of the \$2 million that it contributed over the last two years to be used for operation of the new research facility and for recruitment of faculty and researchers associated with this initiative. As the Memorandum of Understanding that made the revenue possible will expire during the current biennium, this revenue source will cease for the 2026-2027 biennium.

**(9) Impact of Not Funding:**

Inability to conduct research focused on understanding the basic biology of cancer cells with special emphasis on the identification, functional characterization and targeting of tumor specific markers and antigens that will help in developing advanced diagnostic, imaging, and therapeutic modalities (including immunotherapies, vaccines, nanomedicine and preventive strategies) for combating cancer in the Rio Grande Valley.

As County and City MOU funding provided for five biennia will expire during the current biennium, the consequence of not funding this Non-Formula Support Item will exacerbate an already challenging change in resources.

**(10) Non-Formula Support Needed on Permanent Basis/Discontinuu**

Yes, funding is needed to continue this program supporting basic science, cancer biology and translational research in hepatocellular, prostate, liver, breast, colorectal, cervical, pancreatic and liver cancer.

**(11) Non-Formula Support Associated with Time Frame:**

N/A

**(12) Benchmarks:**

N/A

**(13) Performance Reviews:**

Metrics below would be measured on a quarterly basis:

Total External Research Expenditures

Total number and value of Proposals submitted

Total Uncompensated Care Provided

---

---

748 The University of Texas Rio Grande Valley School of Medicine

---

**Limb Preservation Program**

<b>(1) Year Non-Formula Support Item First Funded:</b>	2026
Year Non-Formula Support Item Established:	2026
Original Appropriation:	\$0

**(2) Mission:**

To support UTRGV's strategic initiatives of expanding health education and improving patient care outcomes in South Texas, the Limb Preservation Program (LPP) at UTRGV will coordinate efforts of the Schools of Medicine and Podiatric Medicine to integrate research with a clinical strategy for the treatment and management of diabetes. This program is aligned with the goal of establishing a state-of-the-art Diabetes Center of Excellence at UTRGV.

The Limb Preservation Program includes a team of multidisciplinary specialists who work to prevent limb loss and restore function in diabetic patients with lower limb disease and chronic limb-threatening ischemia.

**(3) (a) Major Accomplishments to Date:**

NA

**(3) (b) Major Accomplishments Expected During the Next 2 Years:**

The LPP will treat diabetic patients at-risk for lower extremity disease and amputations.

The LPP will establish a multidisciplinary team of nurses, allied health professionals and physicians spanning the specialties of podiatry, endocrinology, behavioral health, infectious disease, wound management, and vascular surgery to coordinate care for patients with complex limb threatening disease.

The LPP will operate in conjunction with the Limb Preservation Center facility to reduce amputations and increase interventions to improve patient outcomes.

The LPP will take a holistic approach incorporating patient education, early identification of at-risk individuals, and specialized clinical care.

The LPP will empower patients and their families with the tools and support needed to preserve limb health and enhance quality of life.

UTRGV will coordinate efforts of the Schools of Medicine and Podiatric Medicine to integrate research with a clinical strategy for the treatment and management of diabetes.

**(4) Funding Source Prior to Receiving Non-Formula Support Funding:**

NA

---

748 The University of Texas Rio Grande Valley School of Medicine

---

**(5) Formula Funding:**

NA

**(6) Category:**

Healthcare Support

**(7) Transitional Funding:**

N

**(8) Non-General Revenue Sources of Funding:**

To provide funds for wages, operating expenses, materials, travel, and equipment, the LPP will seek to generate additional funds by pursuing grant opportunities and, once the program is fully operational, generating some patient care revenue.

**(9) Impact of Not Funding:**

Lack of funding would jeopardize the successful launch of this important tool to combat diabetes, obesity, and related vascular disorders as these reach epidemic proportions in Texas and particularly within the Rio Grande Valley.

Adequate resources could help overcome a major obstacle of diabetic foot prevention – that it has not been patient-centered. Patients are often referred to multiple clinics without considering the socio-economic challenges each patient might have. Because behavioral and lifestyle interventions have been largely unsuccessful in addressing the epidemic of metabolic disease, the state needs innovative approaches, such as UTRGV’s patient-centered Limb Preservation Program, in the fight against diabetes, obesity, and other disorders.

Funding would address the urgent need for improved education, preventive strategies, treatments, and management of lower limb diabetes-related complications. Untreated and uncontrolled diabetes leads to numerous lower limb and other health conditions including stroke, renal failure, and heart disease, conditions resulting in preventable amputations, hospital admissions, and devastating life consequences.

**(10) Non-Formula Support Needed on Permanent Basis/Discontinuu**

Yes, a need for funding is anticipated to be ongoing due to the prevalence of diabetes and related disorders in South Texas.

**(11) Non-Formula Support Associated with Time Frame:**

NA

**(12) Benchmarks:**

NA

---

748 The University of Texas Rio Grande Valley School of Medicine

---

**(13) Performance Reviews:**

The Limb Preservation Program will employ a mixed-methods evaluation approach, combining quantitative and qualitative data to track progress. Examples of metrics are as follows:

- Recruitment of subspecialty faculty (% of goals)
- Clinical and quality outcomes, including patient satisfaction surveys, patient retention rates, schedule non-shows (rate and %)
- Reduction in duration of untreated diabetes or pre-diabetes in first consults (% of initial year taken as baseline)
- Reduction in behaviorally modifiable risk markers in patients with diabetes and obesity.
- Impact of education sessions offered in the community (attendance, number of consults/referrals generated)
- Tertiary consultations provided by each subspecialty (number)
- Number of disciplines and health professions participating in each patient contact (to evaluate integration and interprofessional teamwork)
- New unique patient encounters per service line (number per session)

By utilizing a comprehensive evaluation strategy, the LPP can track progress toward its objectives, demonstrate program effectiveness, and continuously advance diabetes care in the RGV.

---

---

748 The University of Texas Rio Grande Valley School of Medicine

---

**School of Medicine**

<b>(1) Year Non-Formula Support Item First Funded:</b>	2015
Year Non-Formula Support Item Established:	2015
Original Appropriation:	\$30,698,950

**(2) Mission:**

The UTRGV School of Medicine is committed to addressing the state’s physician shortage by training talented physician scientists with a mission to transform the health of the Rio Grande Valley and beyond by providing advanced academic medicine through five pillars:

- Innovative Education
- Life-Changing Research and Discoveries
- High Quality Patient-Centered Care
- Serving our Community
- Sustainability and a Culture of Entrepreneurship

The school offers an exceptionally innovative learning experience designed to instill students with the scientific, clinical and research expertise to become excellent physician leaders.

We also seek to attract the best talent for faculty and staff positions critical to our mission. The school opened in the summer of 2016 and welcomed 55 students into its charter class. Since this time, 238 students have graduated, and 220 students are enrolled across the four years of the medical education program.

We continue to grow our clinical and research footprint for the benefit of the Rio Grande Valley. Our research teams are conducting investigations into diabetes, cancer, and neurological disorders with the goal of discovering new treatments for diseases that disproportionately impact the community.

Legislative funding at an appropriate level is essential to supporting our school’s mission, planned growth, and efforts to maintain full accreditation by the Liaison Committee of Medical Education (LCME) as we prepare to increase our enrollment.

**(3) (a) Major Accomplishments to Date:**

---

**748 The University of Texas Rio Grande Valley School of Medicine**

---

1. Received Preliminary Accreditation October 2015
2. Graduated five classes or 238 students since 2020 and welcomed the ninth class of 55 students in June 2024
3. Developed pipeline programs such as JAMP, Vaqueros M.D. and the Early Decision Program to support the recruitment of top students from the Rio Grande Valley and Texas
4. Infrastructure established for Years 1 through 4 of Medical Education: Faculty, Staff, Student Services, Academic Resources, Clinical Sites and Partnerships, Facilities, Technology
5. 160 GME slots across Rio Grande Valley hospital sites at HCA – Rio Grande Regional and Valley Regional Hospitals, Valley Baptist Medical Center, and Knapp Medical Center
6. Development of the South Texas Institute for Diabetes and Obesity and continued development of clinical research allowing students the opportunity to engage in research activities
7. Development of the South Texas Center of Excellence for Cancer Research in McAllen and the Institute of Neuroscience in Harlingen
8. Establishment and continued growth of faculty practice plan, UT Health RGV
9. Received Full Accreditation in June 2023
10. Opening of a Cancer and Surgery Center in McAllen with advisory services from MD Anderson planned in spring 2025.

**(3) (b) Major Accomplishments Expected During the Next 2 Years:**

1. Maintain Full Accreditation in June 2025.
2. Expand graduate medical education programs in primary and specialty care by adding 150 new residency positions by 2030, primarily in McAllen and Brownsville.
3. Expand class size from 55 to 75 in 2026 and from 75 to 100 in 2027.

**(4) Funding Source Prior to Receiving Non-Formula Support Funding:**

NONE

**(5) Formula Funding:**

Formula funding is expected to remain flat in the 24-25 biennium.

**(6) Category:**

Instructional Support

**(7) Transitional Funding:**

Y

**(8) Non-General Revenue Sources of Funding:**

- Funding from UT System - \$10 million a year for 10 years. In 2019 UT System granted spending authority over the remaining \$50 million balance. These funds were used for equipment and capital construction.
- Funds received from Hidalgo County and cities of Edinburg, Pharr, and McAllen as per a Memorandum of Understanding; total paid from 2015 to date is \$31.3 million. Payments received per year are up to \$3.5 million. The MOUs are expiring during the current biennium and this funding stream will cease.
- Grants and private gifts.

---

748 The University of Texas Rio Grande Valley School of Medicine

---

**(9) Impact of Not Funding:**

Full Accreditation would be at risk. The LCME requires that the UTRGV SOM maintain sufficient resources and faculty to sustain the medical educational program and to accomplish programmatic and institutional goals.

Lack of funding would lead to an inability to hire necessary faculty to teach students and build the practice plan to generate sufficient revenue to help offset costs associated with the medical education program and research goals.

Lack of funding may require closing current residency programs and cancelling or delaying the start of new residency programs.

SOM's ability to recruit researchers will be limited.

Lastly, lack of funding would result in delaying plans to expand the class size and expand research for the benefit of the RGV Community .

**(10) Non-Formula Support Needed on Permanent Basis/Discontinuu**

Yes, support is needed on a permanent basis. The SOM has been steadily increasing its formula and practice plan revenues, but the SOM's practice plan is still developing the infrastructure necessary for long-term sustainability. While UT Health RGV, the clinical arm of the SOM, has 25 clinical sites throughout the RGV, the payor mix in the RGV is very poor, and without local revenue (recently expired MOU funding agreements) or a hospital district in the region to support operations, adequate state support is needed to maintain full accreditation and allow for the practice plan, tuition, and formula funding to generate sufficient revenue to offset costs associated with the medical education program and research goals.

**(11) Non-Formula Support Associated with Time Frame:**

N/A

**(12) Benchmarks:**

N/A

**(13) Performance Reviews:**

---

**748 The University of Texas Rio Grande Valley School of Medicine**

---

Metrics will be as follows:

- Number of medical school students enrolled
- Percentage of enrolled students who are from the Rio Grande Valley
- Number of medical degrees awarded
- Percent of medical school graduates practicing in Texas
- Dollar amount of external or sponsored research funds
- Number of full-time basic science and clinical faculty
- Percent of medical school students passing Part 1 and Part 2 of the US Medical Education Licensing Exam on the first attempt
- Total number of outpatient visits
- Total number of inpatient days
- Total number of residency slots
- Percent of medical residency completers practicing in Texas

All metrics will be reviewed at least quarterly and monitored on an on-going basis.

---



---

**748 The University of Texas Rio Grande Valley School of Medicine**

---

**School of Podiatric Medicine**

<b>(1) Year Non-Formula Support Item First Funded:</b>	2024
Year Non-Formula Support Item Established:	2024
Original Appropriation:	\$6,000,000

**(2) Mission:**

The UTRGV School of Podiatric Medicine's (SoPM) mission is to foster student success by inspiring, educating, and developing a student body fully prepared for podiatric residency training, becoming dedicated podiatric physicians, research scientists, public health professionals, and educators.

The SoPM was granted candidacy in June 2022 by the Council on Podiatric Medical Education (CPME), making it the first podiatry school in Texas and only the 11th in the nation. There is a great need in Texas to educate and train generations of podiatric physicians to diagnose, assess, manage, and treat conditions and diseases of the foot and ankle as well as serve the diabetic population in Texas. Including a podiatrist in the care team of a diabetic patient can reduce their risk of amputation of lower limbs by up to 85%.

The requested appropriation is needed to support operations and employees until full formula funding materializes and to meet requirements of stable and predictable revenue as the SoPM moves towards accreditation. Initially, the plan was to create a cost savings by having 1st and 2nd year podiatric medicine and medical students follow the same curriculum and learn together, but neither of the accrediting bodies recommended that approach. Instead, UTRGV separated the programs and is currently teaching podiatric medicine in Harlingen at the UTRGV Clinical Education Building.

**(3) (a) Major Accomplishments to Date:**

- Candidacy status accreditation received on: 6/9/22
- Inaugural Dean hired on: 7/1/22
- Faculty hires as of 4/1/2024: 12 full-time, part-time
- Staff hires as of 4/1/2024: 15
- Students admitted for first Year of Program as of 8/1/22: 27
- Students admitted for second Year of Program as of 8/1/23: 36

The SoPM has made progress on hiring both faculty and staff who together have advanced the school into the next phase of hiring, student interviews, admissions, and training of the inaugural class of students. The 18.35 FTE hires to date represent a major milestone for the SoPM and bring a wealth of knowledge and diversity to teach basic science and podiatric medicine, biomechanics, and surgery. The SoPM considers student success a top priority and the five staff members hired to date have successfully established a system of admissions, student services, finance/accounting, curricular assessment, and customer service.

The SoPM was restricted from initiating any recruiting activities until Candidacy Status was awarded in June 2022, at which point the SOPM immediately began its recruiting efforts. The three cohorts combined have yielded 84 students to date notwithstanding the abbreviated recruiting period. The process continues to yield many very well qualified applicants.

---

748 The University of Texas Rio Grande Valley School of Medicine

---

**(3) (b) Major Accomplishments Expected During the Next 2 Years:**

The SoPM will increase overall enrollment each year. The school is approved to admit 40 students each year and there are a total of 84 students seated for the 2024-2025 academic year. At least a similar number of students are expected to be seated in FY 2026 and FY 2027.

SoPM will promote students to their subsequent year of education and training; a small percentage of attrition can be expected.

The SoPM will increase the number of students who train and provide care in health clinics throughout the region in the coming biennium, including at the Area Health Education Centers, UT Health RGV clinics, Su Clinica, and the Brownsville Community Health Center. Students will be able to administer care to some of the Rio Grande Valley's most underserved communities, while simultaneously benefiting from the educational opportunities that experiential learning provides.

Along with the progress in class size and education, the SoPM will hire additional faculty and staff to support pre-clinical education and student health clinics.

**(4) Funding Source Prior to Receiving Non-Formula Support Funding:**

Institutional fund balances were used in FY 22, prior to admitting students.  
In FY 24, SoPM received \$6 million from special item requests.

**(5) Formula Funding:**

Based on enrollment of 27 students for AY22-23, the program generated \$1,243,337 in formula funding 24-25 biennium.

**(6) Category:**

Instructional Support

**(7) Transitional Funding:**

Y

**(8) Non-General Revenue Sources of Funding:**

Non-statutory tuition generated by program enrollment will be used to help offset operating costs.

Student health clinics will begin to generate some revenue beginning in FY 2025. However, that revenue is expected to be minimal in light of the poor payor mix in the Rio Grande Valley.

**(9) Impact of Not Funding:**

Institutional support will continue to be used for support of all educational aspects of the SoPM. However, an insufficient level of Non-Formula Support funding will have a negative impact on the accreditation process for the SoPM, as accreditors expect that successful programs are supported by stable and predictable revenue sources. It is imperative for the SoPM, as the first podiatric medicine school in Texas, and the first state-supported podiatric medicine school in the nation, to establish itself as a stellar example for the profession. Further, if the SoPM functions with minimum staff and faculty, insufficient funding will result in a substandard educational environment, poor education delivery, faculty and staff burn out, and poor student satisfaction.

---

748 The University of Texas Rio Grande Valley School of Medicine

---

**(10) Non-Formula Support Needed on Permanent Basis/Discontinuu**

No, the expectation is that enrollment growth and associated growth in formula funding, patient care, and research revenues will eventually be sufficient to support operations.

**(11) Non-Formula Support Associated with Time Frame:**

Yes, although not on a definitive time frame, the Non-Formula Support funding will be requested until the point that enrollment growth and associated growth in formula funding, patient care and research revenues will be sufficient to support operations.

**(12) Benchmarks:**

The most important benchmarks for a new professional school at the collegiate level have to do with enrollment and retention:

- Recruit, admit, and seat inaugural class of students in year one, two and three.
- Ramp up to full enrollment of each cohort in year two and each subsequent year (current full enrollment is approved at 40 students per class).
- Maintain retention rates at an acceptable level.
- Faculty performance based on student evaluations, student satisfaction, and perception surveys.

**(13) Performance Reviews:**

Several performance metrics will be used to assure the increase of class size and retention of students:

- SoPM will measure the effectiveness of educational platforms to optimize student success by surveying each student.
  - SoPM will monitor yearly student retention and attrition rates with a goal of <10%.
  - SoPM will measure APMLE 1 national boards passing rate with a goal of >95%.
  - SoPM will monitor its faculty retention and success as it positively influences increasing class size.
  - Receive positive feedback from accreditors with the goal of achieving provisional accreditation status (the second step in the accreditation process) in 2024.
-