

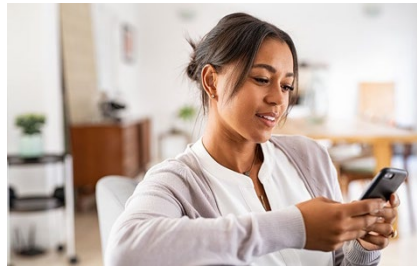
Your Fertility and Family Building Benefit

Provided by: The University of Texas System



Comprehensive Coverage

Fertility treatment coverage for every unique path to parenthood.



Personalized Support

Unlimited clinical and emotional support from a dedicated Patient Care Advocate (PCA).



High Quality Care

Convenient access to a premier network of fertility specialists across the US.

Your Progny fertility benefit has been specifically designed to give you the best chance of fulfilling your dreams of family. The Progny Smart Cycle covers all the individual services, tests, and treatments you may need. Progny removes barriers to care so you and your doctor can create the customized treatment plan that is best for you.

Your Progny coverage includes:

2 Smart Cycles

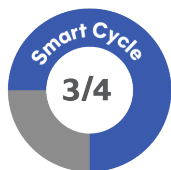
Progny Rx Integrated fertility medication coverage

Fertility Preservation Egg and sperm freezing coverage

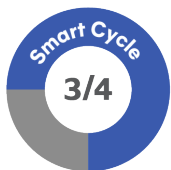
Donor Tissue Purchase Egg and sperm tissue purchase coverage

Note: Please note that eligibility for this benefit under the UT SELECT Medical plan requires that the member accessing benefits must have been continuously enrolled in a UT System medical plan for at least 12-months immediately prior to accessing this benefit. Prior periods of coverage under a UT System medical plan (with a break following coverage) cannot be counted toward the continuous coverage requirement. Enrollment in the Student Health Plan does not count toward the continuous coverage requirement. Your coverage will be subject to copayments. Some treatments may be considered a taxable benefit. Please consult with your tax advisor for additional information.

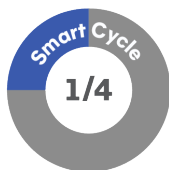
Common ways to use a Smart Cycle:



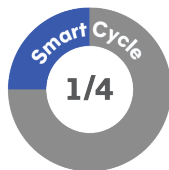
IVF Fresh Cycle



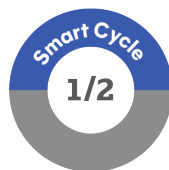
IVF Freeze-All Cycle



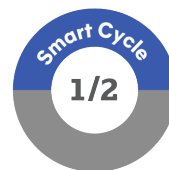
Frozen Embryo Transfer (FET)



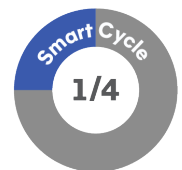
Intrauterine Insemination (IUI) or Timed Intercourse



Pre-Transfer Embryology Services



Egg Freezing



Sperm Freezing

To learn more and activate your benefit, call: 844.535.0711

