



THE UNIVERSITY OF TEXAS  
RIO GRANDE VALLEY



THE UNIVERSITY OF TEXAS  
RIO GRANDE VALLEY

# Institute for Transformational Learning (ITL)

Marni Baker

Chief Innovation Officer, UT System

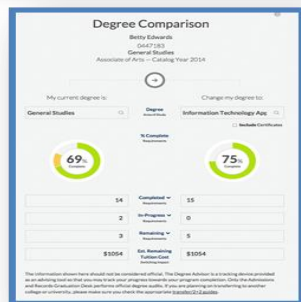
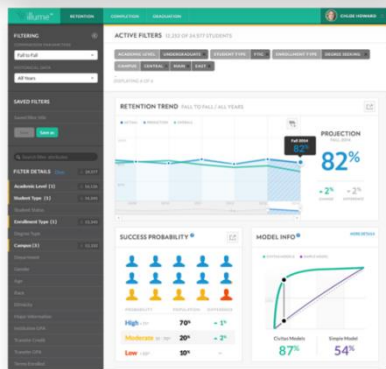
And Stephen Mintz

Executive Director of the ITL, UT System



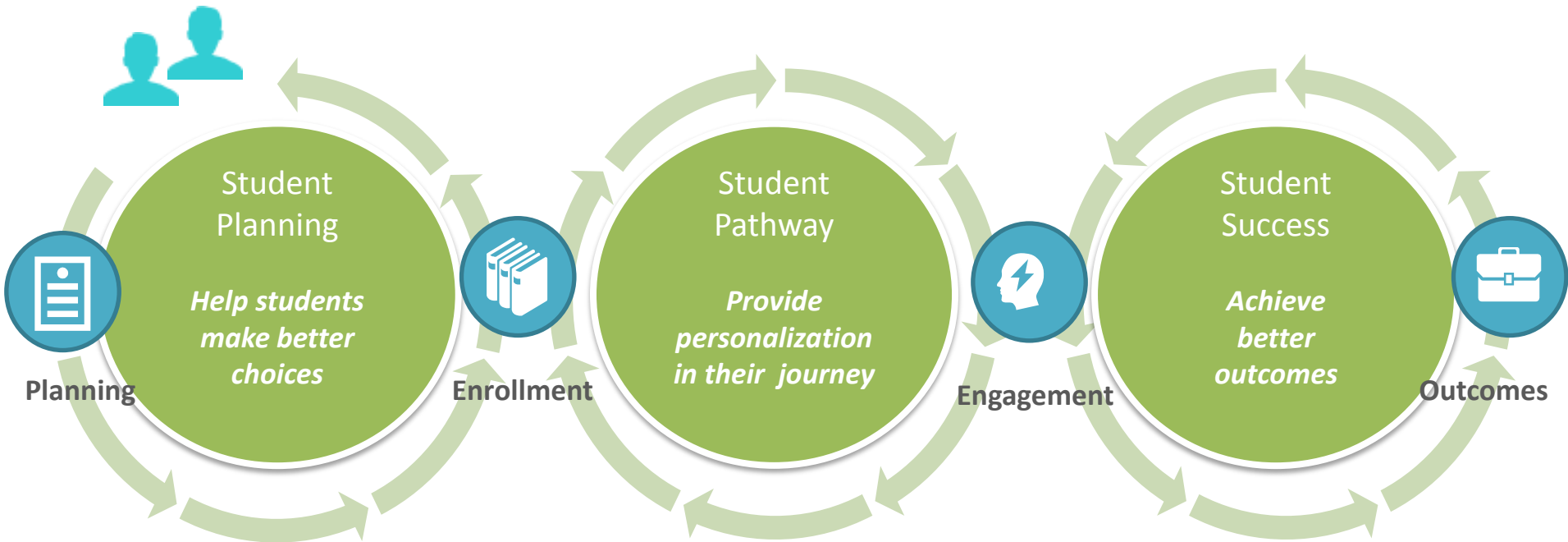
## Transformational Student Lifecycle Management at UTRGV

This initiative will reduce costs, improve access, and optimize time to degree by:



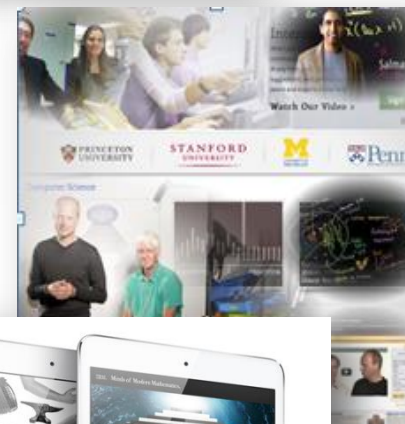
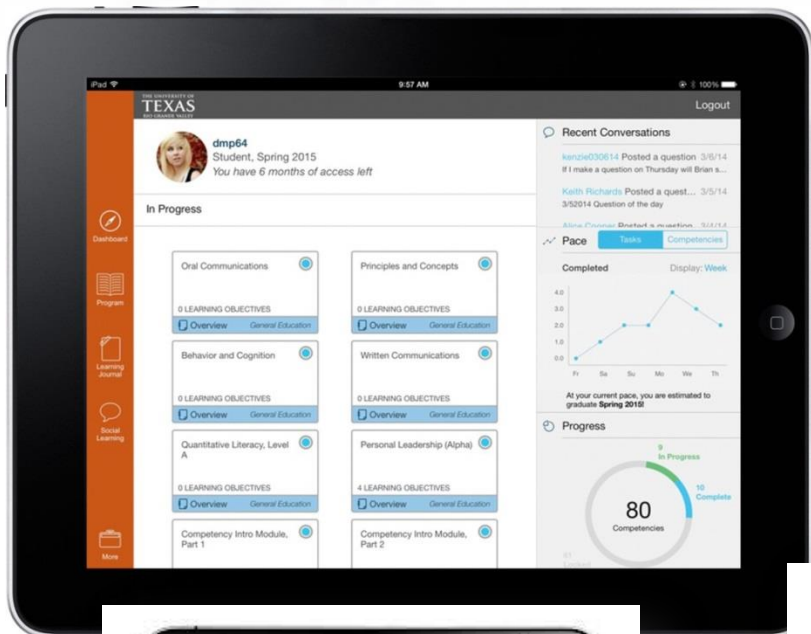
- Fully integrating next generation technology and personalization applications into the UTRGV student lifecycle management ecosystem in order to maximize student success.
- Streamlining academic and student services and re-designing processes to increase productivity and promote a student- and service-centered mode of operation.
- Offering these services in the cloud to allow and encourage access anytime, anywhere on any device.
- Recruiting, supporting and inspiring the diverse student body that will make UTRGV one of the largest and most successful Hispanic-serving institutions in the United States.
- Prototyping a replicable breakthrough model for other universities across the System. **(First Gates grant received)**

## Addressing the SLM Challenge: Integrated Next-Generation Student Lifecycle Management Platform



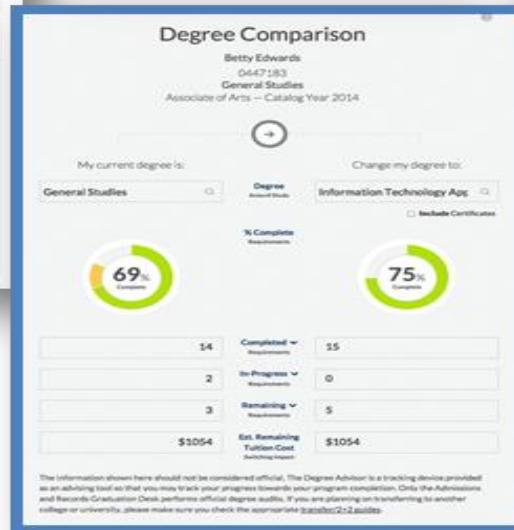
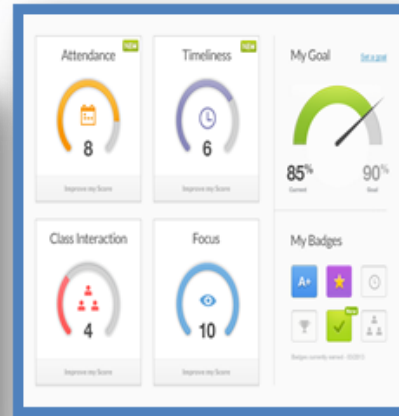
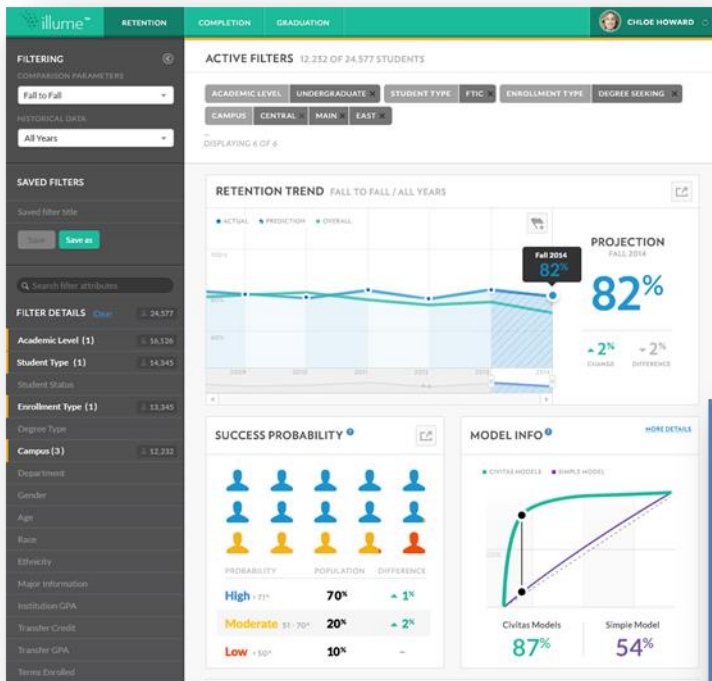


# Addressing the SLM Challenge: Engaging, Adaptive Curriculum Design and Learning Applications



# THE UNIVERSITY OF TEXAS RIO GRANDE VALLEY

## Addressing the SLM Challenge: Powerful Analytics, Machine Learning and Recommendation engines



## Addressing the SLM Challenge: Beautiful, Engaging User Experience



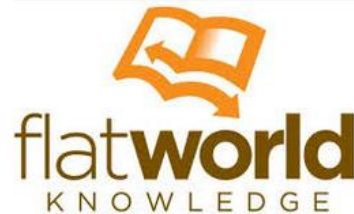
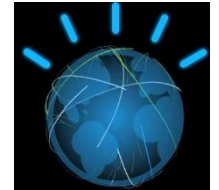
**The simple, streamlined, integrated user experience (UX)** will allow students to review and interact dynamically with all their student lifecycle management tools (SIS, CRM, LMS, PAF applications, etc.) through one integrated experience. The UX will be designed to allow students to enroll, track progress to goal, engage in their courses, interact with their instructors, advisors and fellow students and more – anytime, anywhere and on any device.





THE UNIVERSITY OF TEXAS  
RIO GRANDE VALLEY

Addressing the CBE Challenge:  
The Partnership Landscape





## Online, Industry-Driven CBE



**Better serves students, parents, and employers seeking a value proposition linked explicitly to competencies and employment outcomes** and who demand optimized pathways to goal – across multiple institutions and instructional contexts.



**Fundamentally changes the faculty role.** CBE shifts the role of the faculty from that of "a sage on the stage" to a "guide on the side" – available for just-in-time interventions that can remediate, extend, and inspire.



**Harnesses the power of emergent technologies for teaching and learning.** Computer-mediated adaptive instruction gives us the ability to individualize learning for each student.



**Enables a new scalable model of higher education that is significantly more affordable, efficient and effective** for large audiences of students who are currently underserved.

# THE UNIVERSITY OF TEXAS RIO GRANDE VALLEY

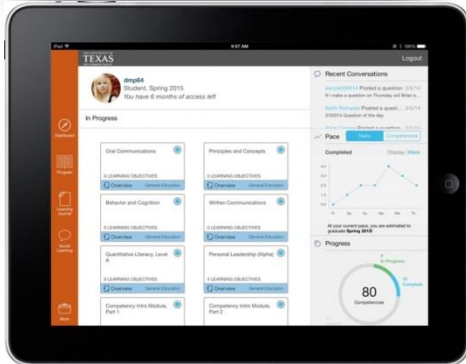
Edinburg

Brownsville

## First Opportunities: UTRGV CBE BS in Biomedical Sciences Online (Bilingual)

First of its kind program designed to:

- scale and serve large unmet demand in the region, across Texas and beyond.
- **drive exponential increases in at-risk student retention, completion and employment outcomes** and optimize every student's time to degree.
- grow FTE substantially over next 5 years
- raise money and garner support services from external funders like Gates, Lumina, etc. (**First Gates grant received**)
- prototype a replicable breakthrough model for other universities across the system.



THE UNIVERSITY OF TEXAS  
RIO GRANDE VALLEY



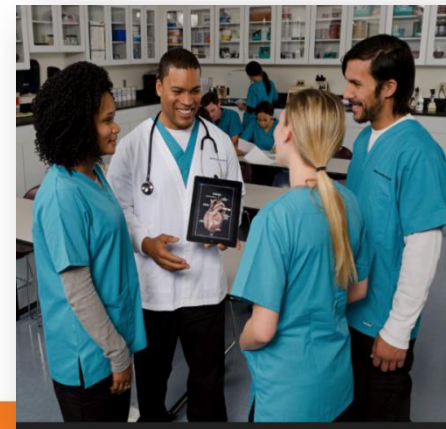
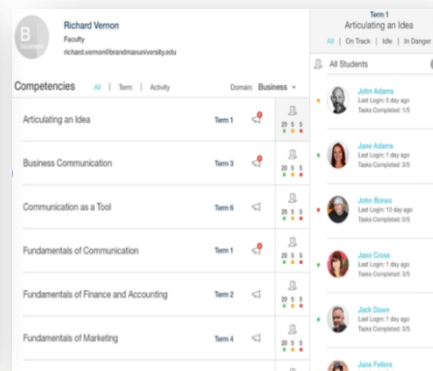
THE UNIVERSITY of TEXAS SYSTEM  
Nine Universities. Six Health Institutions. Unlimited Possibilities.



## First Opportunities: CBE First Two Years of Medical School Online (Multi-lingual)

First of its kind program designed to:

- establish a new scalable model of medical education to serve unmet demand in region and beyond
- achieve exponential increases in retention and completion
- grow enrollments to 5,000 in program over 5 years
- raise money and garner support services from external funders like Gates, Lumina, etc.
- license model to other universities globally.



**CBE Biomedical and Health Science  
Programming**

**BS in Biomedical Science at UTRGV**  
**Next-Generation Medical School at**  
**UTSA/UTRGV/UTAustin**

Professional and Industry Advisories

Medical School

Employment/MS/  
PhD

Employment/  
MPH/MBA

**Academic Partner:**  
**UTHCSA,UTRGV,**  
**UTAustin**

Pre-Med  
Specialization

Health  
Informatics  
Specialization

Health  
Administration  
Specialization

**Academic Partner:**  
**UTRGV/TIME**  
**Initiative (APRIME)**

**Academic Partner:**  
**UTRGV/School of**  
**Biomedical Informatics**  
**UTHealth Houston**

**Academic Partner:**  
**UTRGV/School of Public**  
**Health**  
**UTHealth Houston**

Competency-based  
Individualized pathways  
Industry-targeted  
Research-focused  
Problem-driven  
Team-based learning  
Affordable  
Scalable  
Licensable

BIO/SCI CORE

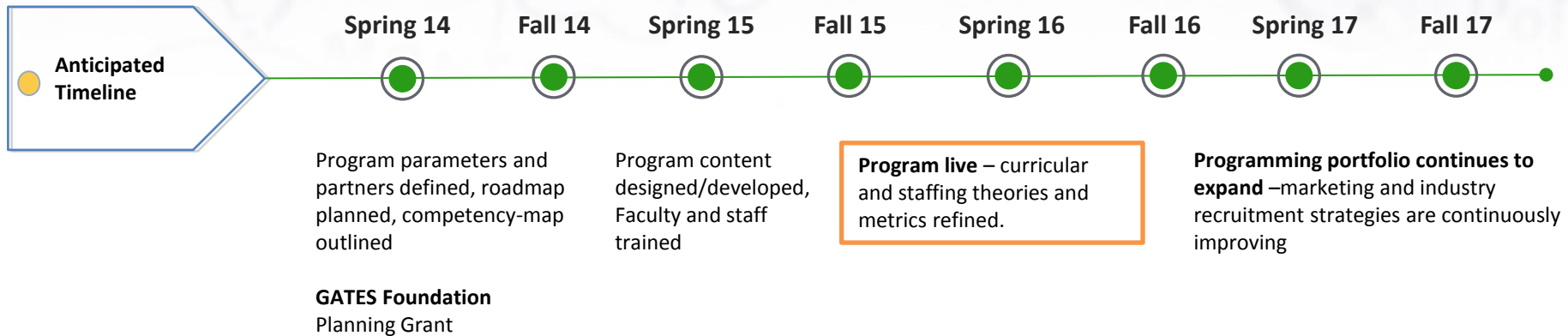
**Academic Partner:**  
**UTRGV**







## Status: UTRGV CBE BS in Biomedical Science



- **5 year target UT enrollments: 5,000+ FTE**
- Licensing potential – TBD (30-75% royalty)
- External Funding – HIGH (**First Gates grant received**)
- Potential for E2B and E2M recruitment/industry partnership - HIGH
- ITL operated in partnership with UTRGV
- Tuition Revenue flows into UTRGV (ITL expense allocated)
- Licensing revenue flows into ITL and is distributed through partnership model



**In progress:** Partnership model, Pricing study; Definition of cost structures